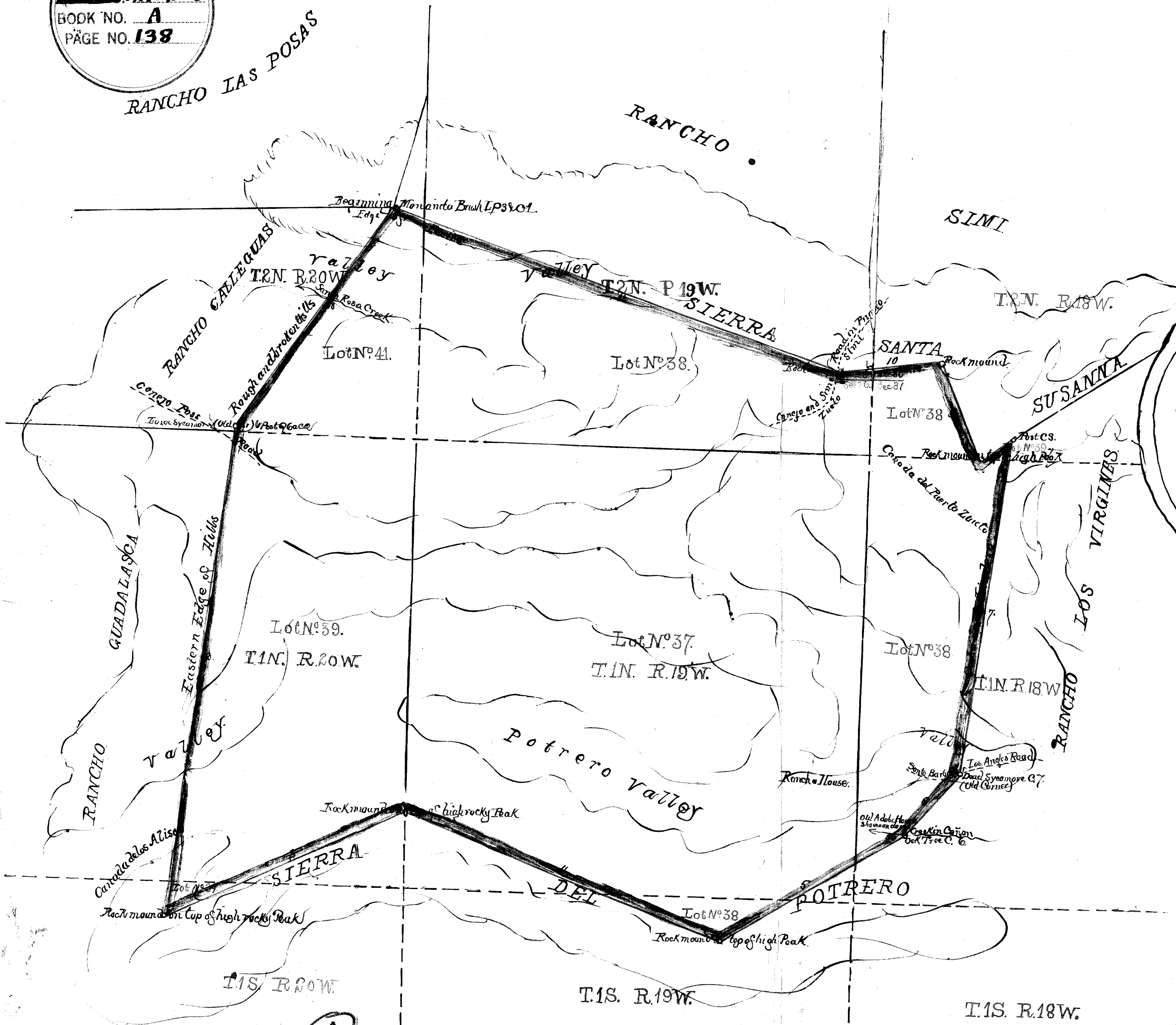


OLD FILE PLAN
PATENTS
 BOOK NO. **A**
 PAGE NO. **138**

RANCHO LAS POSAS

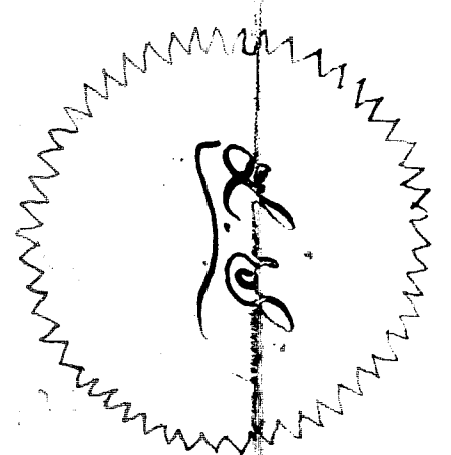


PLAT
 of the
RANCHO EL CONEJO
 finally confirmed to
JOSE DE LA GUERRA Y NORIEGA
 Surveyed under instructions from the
U. S. SURVEYOR GENERAL
 by
J. E. Terrell, Dep. Sur.
 January, 1861.
 Containing 48 671.86 Acres
 See the scale to 1 inch.
 Variation 13° 30' East

Boundaries.

No	Course.	Distance
1	S. 24 1/2° W.	286.00
2	S. 64 1/2° W.	327.83
3	N. 65° E.	278.76
4	S. 70° E.	362.72
5	N. 58 1/2° E.	224.87
6	N. 39 1/2° E.	84.75
7	N. 7 1/2° E.	365.00
8	S. 55 1/2° W.	42.80
9	N. 23 1/2° W.	42.65
10	S. 8 1/2° W.	109.10
11	N. 71 1/2° W.	503.08

Aggregate Area 289860 - 36718 1/2 Ch. 56 Lks



A full true and correct copy of the Original Plat.
 on file in this Office
 U. S. Surveyor General's Office
 San Francisco, California
 1861.
 J. E. Terrell
 U. S. Surveyor General

138

Note: Notice of approval of this plat and its retention
 in office for four weeks subject to inspection was published
 from the 19th of September 1862 to the 29th of January
 1863 in pursuance of the Act of Congress of June 4th 1860.

J. P. Harcupbergh
 U. S. Survey Gen. Cal.

The field notes of the "Rancho El Conejo" and from which
 this Plat has been made out, have been examined and approved,
 and are on file in this Office.
 U. S. Surveyor General's Office.
 San Francisco, California
 March, 19th 1861.

J. W. Monderville
 U. S. Survey Gen. Cal.