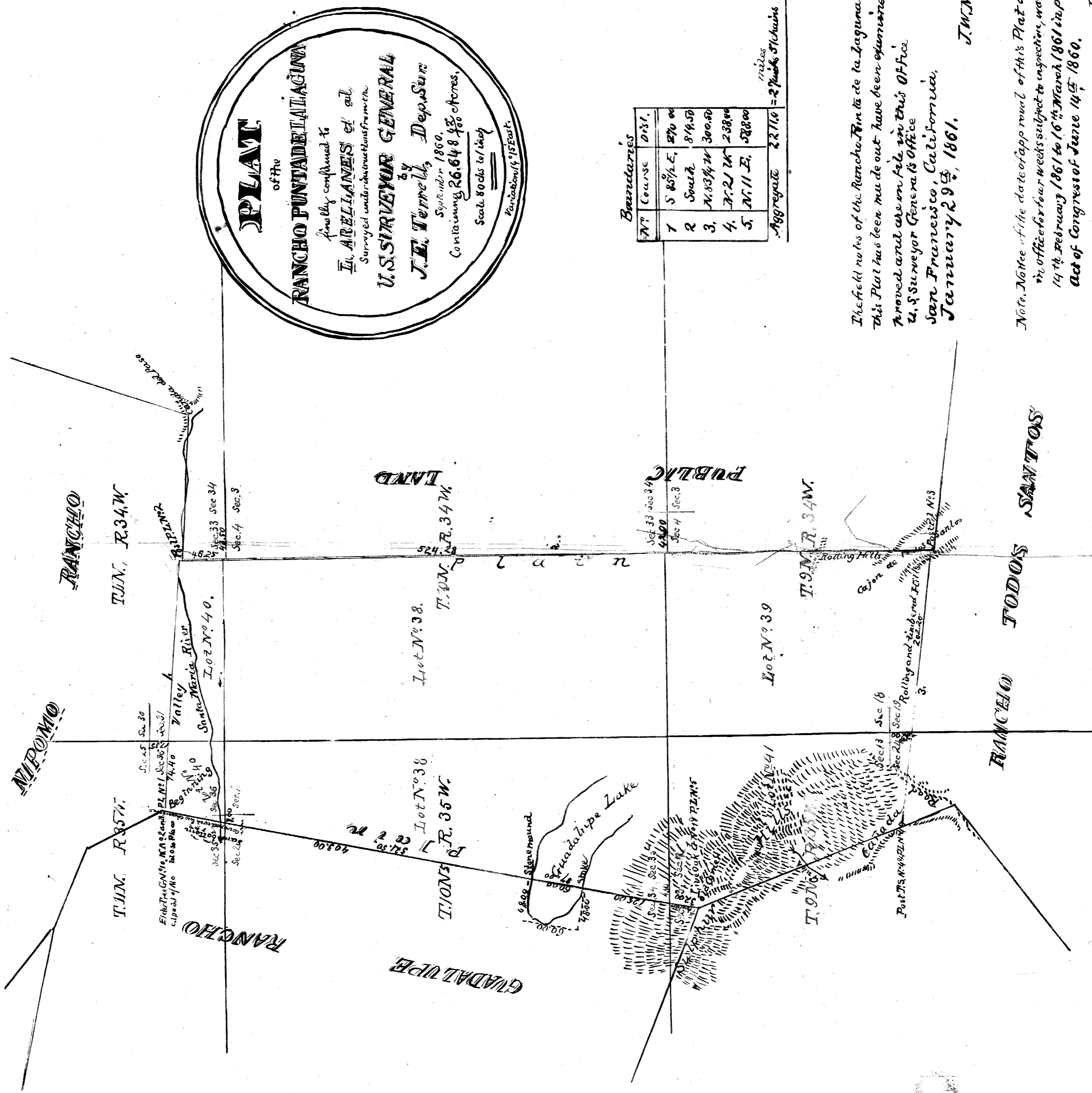


1-19



PLAT
of the
RANCHO PUNTA DE LAGUNA
As fully confirmed to
L. A. BELLAMINE'S et al.
Surveyed under instructions from the
U. S. SURVEYOR GENERAL
by
J. E. Terrell, Dep. Sur.
Sept. under 1860.
Containing **26,648 4/8** acres.
Scale 80cks to 1 Mig
Per Section 15 East.

Boundaries	
N ^o	Course Dist.
1	S 85 1/2 E. 870 00
2	South 845 50
3	N. 83 1/4 W. 300 00
4	N. 21 1/4 W. 238 00
5	N. 11 E. 528 00
Aggregate 22710 = 2 7/10 miles	
= 2 7/10 Sticks	

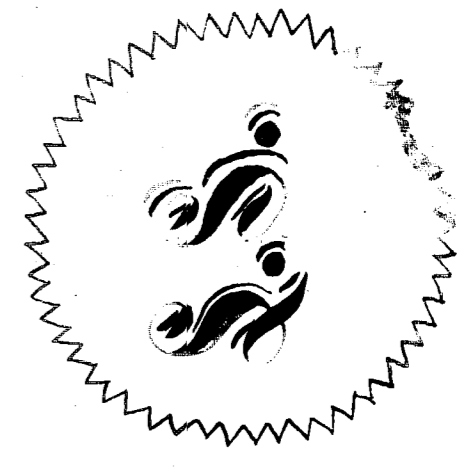
The field notes of the Rancho Punta de Laguna from which this Plat has been made out have been examined and approved and are on file in this Office U. S. Surveyor General's Office San Francisco, California, January 29th 1861.

J. W. Mandeville
U. S. Surv. Gen. Cal.

Note. Notice of the date of approval of this Plat and its retention in office for four weeks subject to inspection, was published from 14th February 1861 to 16th March 1861 in pursuance of the Act of Congress of June 14th 1860.

J. W. Mandeville
U. S. Surv. Gen. Cal.

A full true and correct copy of the original plat on file in this office.
U. S. Surveyor General's Office -
San Francisco, California,
July 22nd 1873.



J. R. Harshbarger
U. S. Surv. Gen. Cal.

OLD FILE PLAN
PATENTS
BOOK NO. **A**
PAGE NO. **152**