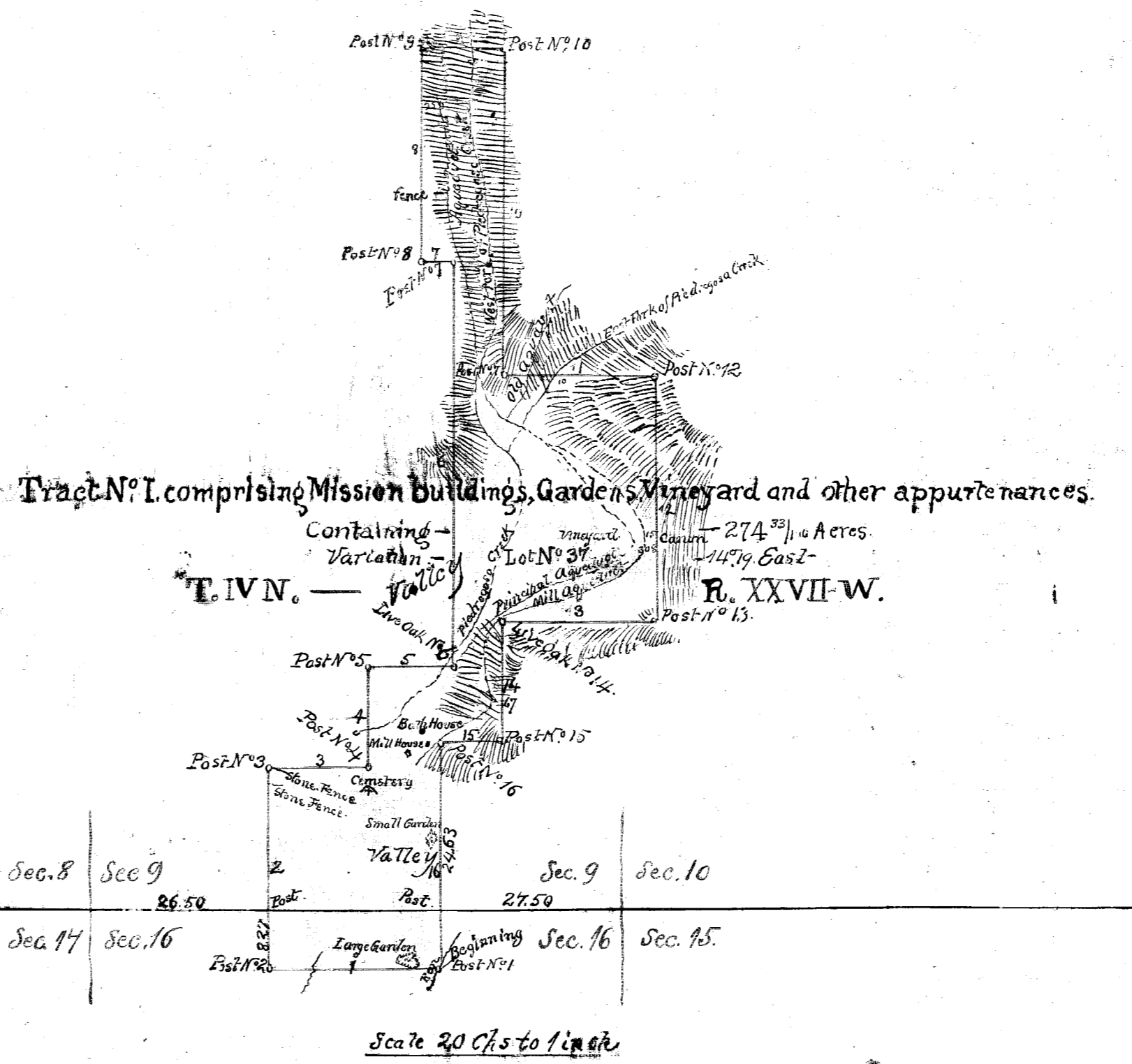
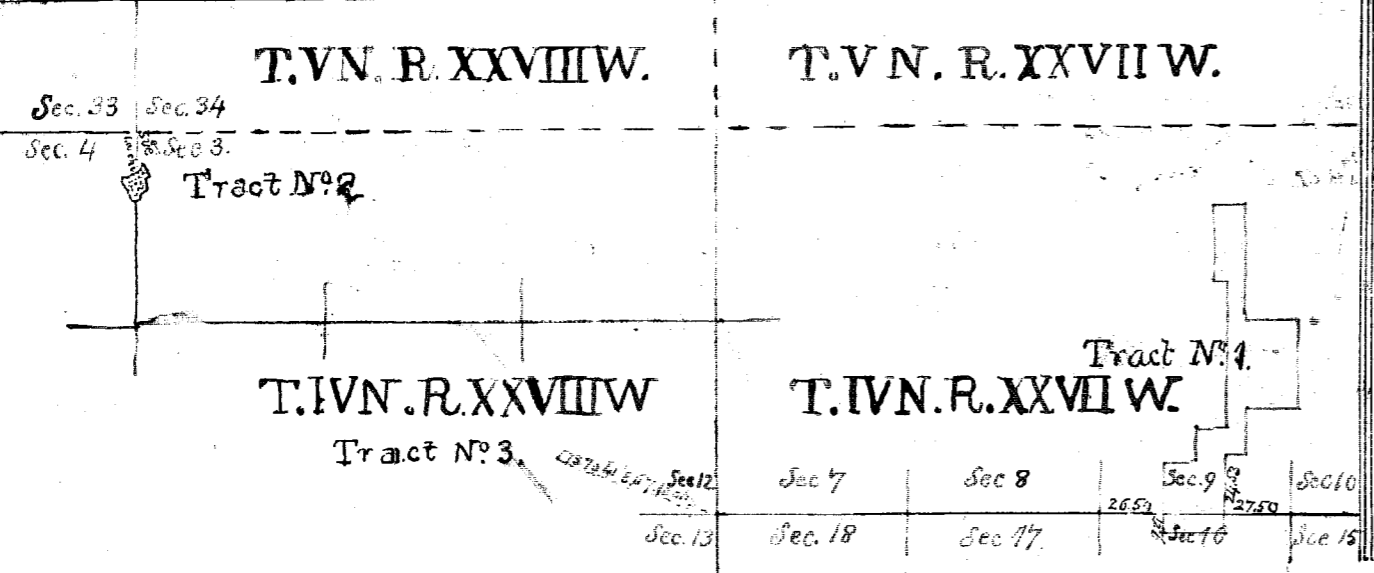
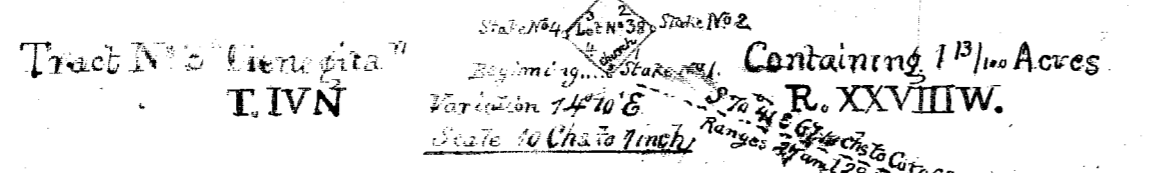
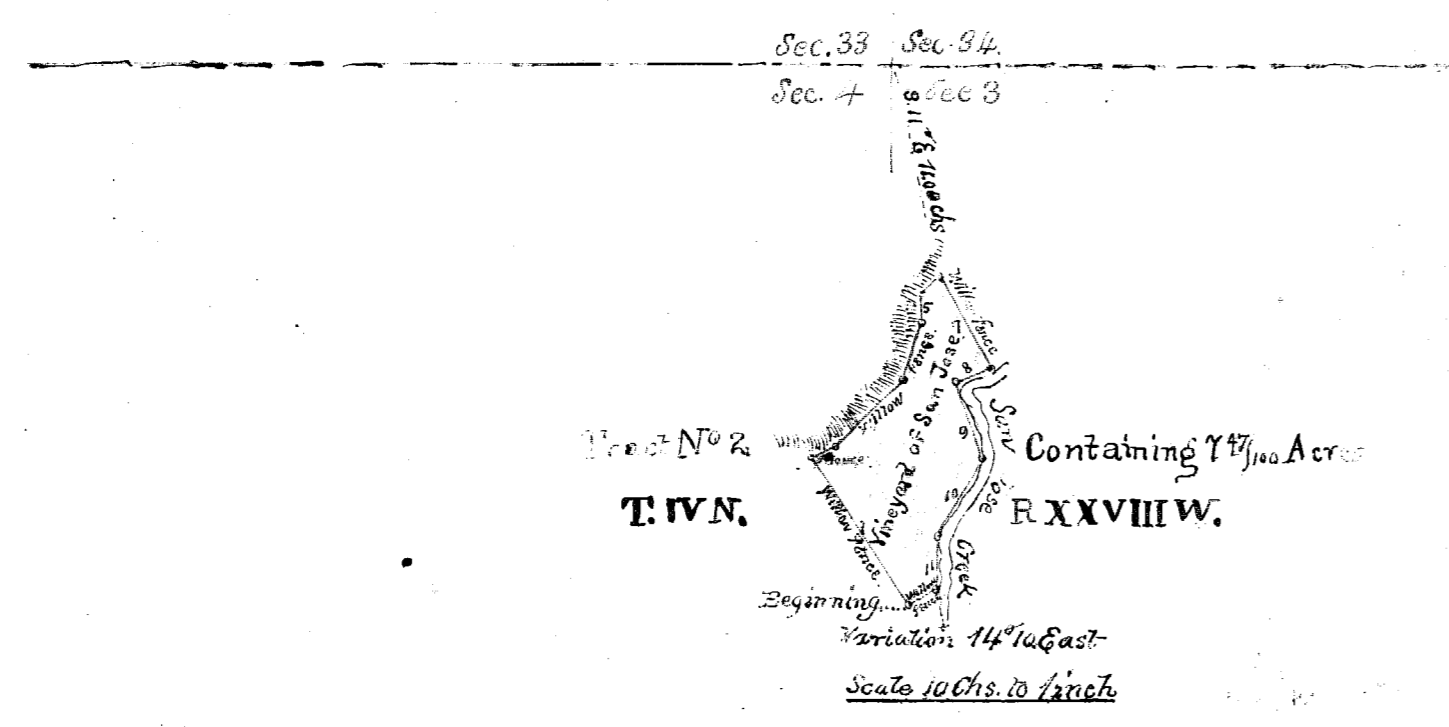


133

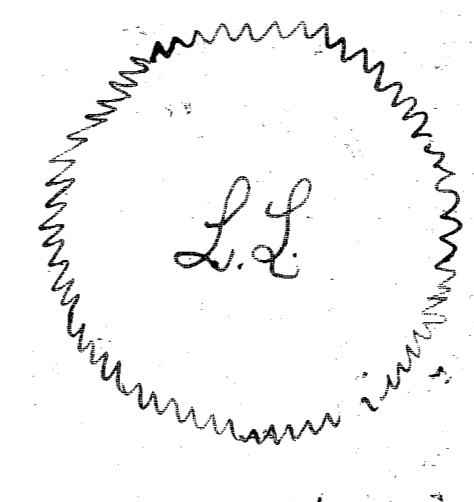


Note Notice of the approval of this Plat and its retention in Office for four weeks subject to inspection was published from the 7th of May to the 29th of May 1862 in pursuance of the Act of Congress of June 14th 1860

E. H. Peales
 U. S. Sur Genl. Cal.

The field notes of the "Lands belonging to the Mission of Santa Barbara" from which this Plat has been made have been examined and approved by the U. S. Surveyor General's Office, San Francisco California March 20th 1862.

E. H. Peales
 U. S. Sur Genl. Cal.



PLAT
 of the
 Lands belonging to
MISSION OF SANTA BARBARA
 finally confirmed to
J. S. Alemany, Bishop, etc.
 Surveyed under instructions from the
U. S. SURVEYOR GENERAL
 by
 J. E. Terrell, Dep. Sur., December, 1860,
 and
 Ebenezer Milder, Dep. Sur., November, 1861.
 Containing 283 1/100 Acres.

Boundaries.

No	Course	Dist.	No	Course	Dist.
Tract No. 1					
1	West	26.00	9	East	12.42
2	North	30.33	10	South	49.32
3	East	15.00	11	East	23.00
4	North	15.00	12	South	37.12
5	East	13.04	13	West	23.00
6	North	60.50	14	South	18.05
7	West	5.00	15	East	9.00
8	North	32.00	16	South	34.00
Aggregate of Extrem Boundaries Tract No. 1 = 571.78 = 571 7/8 = 571 26 2/3 Chs.					
Tract No. 2					
1	N. 34 W.	9.50	7	S. 22 E.	6.00
2	N. 77 1/2 E.	1.72	8	S. 74 W.	2.00
3	N. 44 E.	5.00	9	S. 18 1/2 E.	4.30
4	N. 18 E.	3.00	10	S. 30 W.	4.80
5	N. 7 1/2 W.	1.56	11	S. 3 1/2 W.	2.77
6	N. 41 E.	1.93	12	S. 58 W.	1.65
Aggregate of Extrem Boundaries Tract No. 2 = 22.11 = 22 1/10 Chs.					
Tract No. 3					
1	N. 47 E.	3.36	3	S. 47 W.	3.36
2	N. 47 W.	3.36	4	S. 49 E.	2.36
Aggregate of Extrem Boundaries Tract No. 3 = 6.72 = 6 7/10 Chs.					