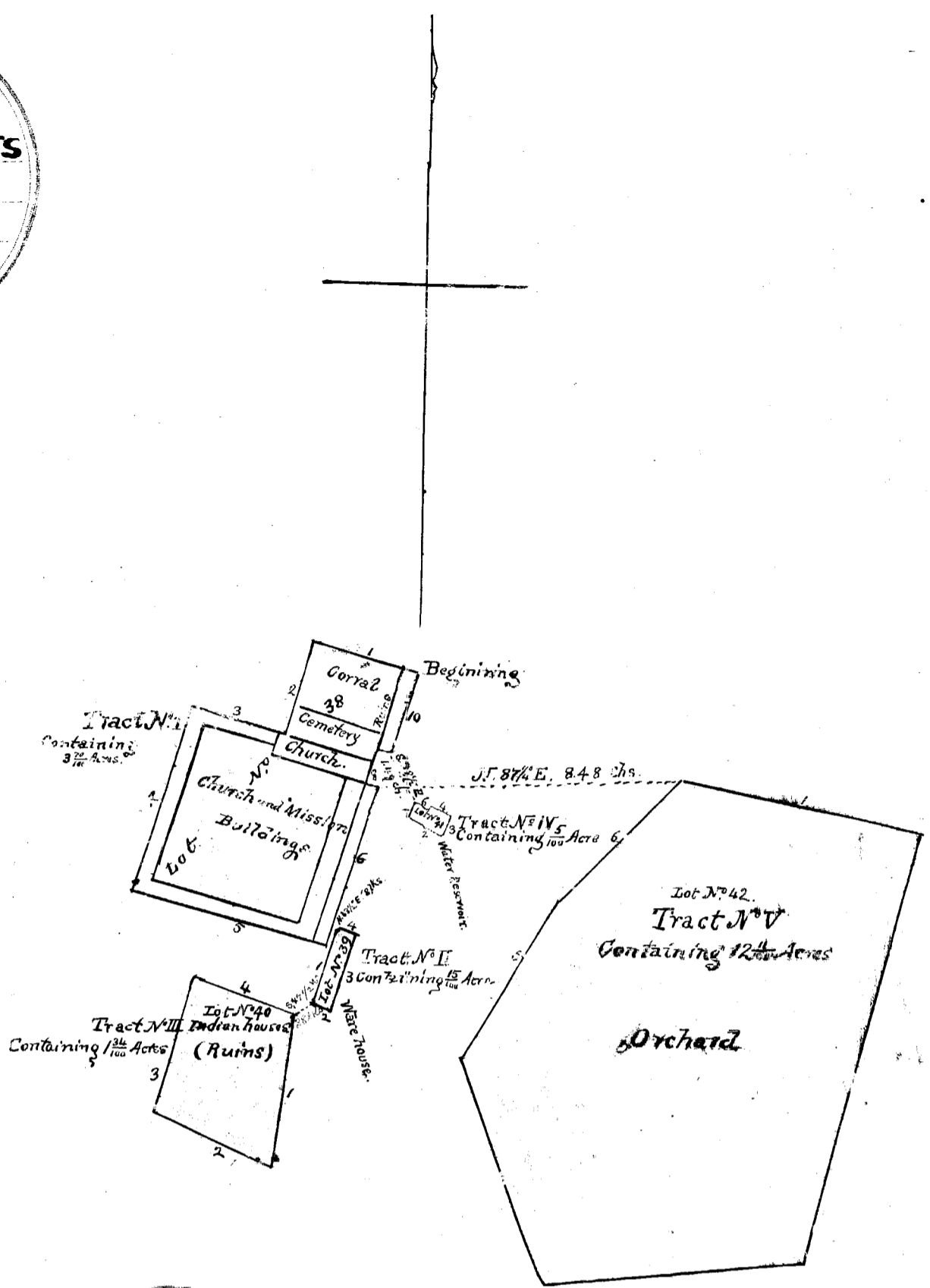


OLD FILE PLAN  
**PATENTS**  
 BOOK NO. **A**  
 PAGE NO. **190**



190

Boundaries

No.	Course	Dist.	No.	Course	Dist.	No.	Course	Dist.
1	N. 74° W.	2.93	1	S. 8 1/2° W.	4.37	6	N. 54° W.	4.35
2	S. 76° "	2.69	2	S. 20° W.	2.28	7	Aggregate	3.10
3	N. 74° "	2.77	3	N. 70° E.	0.65	8	N. 65 1/2° "	3.65
4	S. 76° "	5.30	4	N. 16° "	3.81	9	N. 78 1/2° E.	6.76
5	N. 74° "	5.54	5	N. 70° W.	2.28	10	N. 15° N.	12.26
6	N. 76° "	4.69	6	Aggregate	3.85	11	N. 83° "	7.16
7	N. 74° W.	0.24	7	Aggregate	14.86	12	N. 21° E.	6.63
8	N. 76° E.	1.00	8	S. 31° W.	0.45	13	N. 30° "	3.00
9	N. 74° "	0.39	9	N. 59° E.	0.96	14	N. 45° "	4.97
10	N. 76° "	2.30	10	N. 31° "	0.59	15	Aggregate	42.78
11	Aggregate	27.85	11	N. 54° W.	0.63			
			12	S. 31° "	0.11			

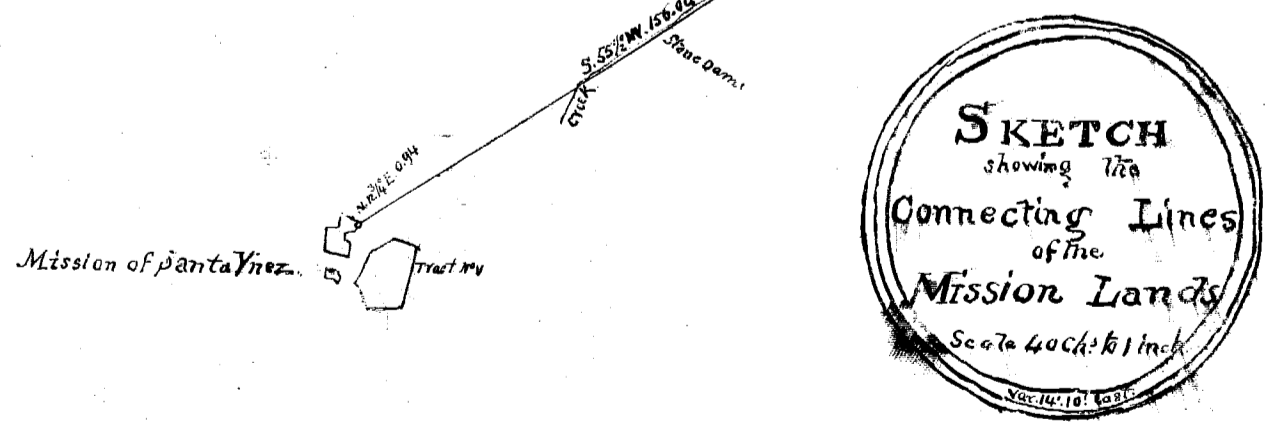
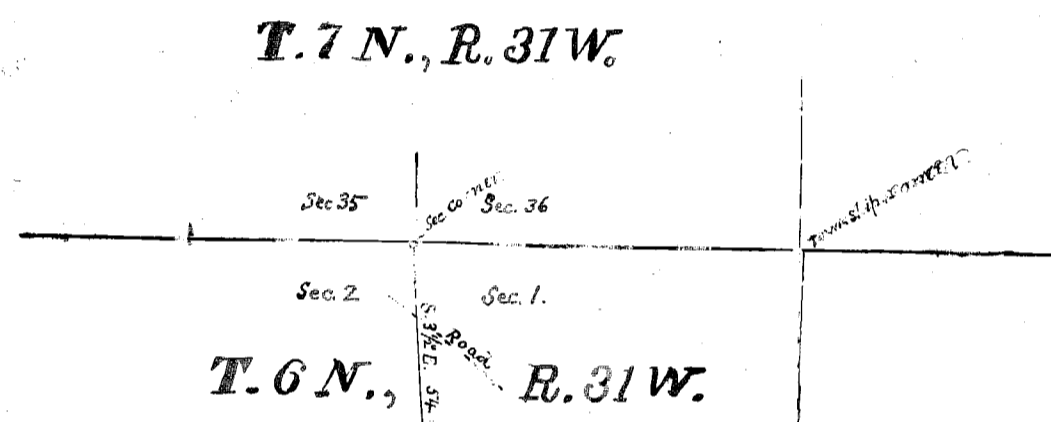
Connecting Lines

From Tract No 1 to Tract No 11	N. 23 1/2° E.	0.68 chs
From Tract No 11 to Tract No 11	S. 47 1/2° W.	0.38 "
From Tract No 1 to Tract No 11	N. 28 1/2° E.	7.49 "
From Tract No 1 to Tract No 11	N. 87 1/2° "	8.48 "
From Cr. to Sec. 1-2-35-36, in Township 6 and 7 North Range 31. West.	S. 3 1/2° E.	54.00 "
	N. 5 1/2° "	65.00 "
	N. 36 1/2° "	20.00 "
	N. 55° W.	156.00 "
	N. 12 1/2° E.	0.94 "
Aggregate of Connecting Lines		306.97 "

Receipts taken.

Return boundaries of Tract No 1	27.85 chs
" " " "	5.86 "
" " " "	14.86 "
" " " "	3.10 "
Connecting Lines	42.78 "
Aggregate of present accounts	101.49 "

5 miles 7 chs 42 lks.



**PLAT**  
 of the lands belonging to the  
**MISSION of SANTA YNEZ**  
 finally confirmed to  
**J.S. ALEMANY** Bishop etc.  
 Surveyed under instructions from the  
**U.S. SURVEYOR GENERAL**  
 by  
**J.E. Terrell** Dep. Sur.  
 October 1860  
 Containing 17 1/2 Acres  
 Scale 4 chs to 1 inch  
 North 1/4 of East

The field notes of the lands belonging to the Mission of Santa Ynez from which this Plat was taken, have been examined and approved and are on file in this office  
 J. S. ALEMANY, Surveyor General  
 San Francisco, California  
 January 29<sup>th</sup> 1861  
 Signed J. W. Mandeville U.S. Land Genl. Cal.

A full true and correct copy of the original Plat, on file in this office  
 U.S. Surveyor General's office  
 San Francisco California  
 October 29<sup>th</sup> 1861

L. G.

E. F. Seale  
 U.S. Survey Genl. Cal.

Note: Notice of the approval of this Plat and its retention in office for four weeks, subject to inspection, was published from 6<sup>th</sup> of September to 17<sup>th</sup> of October 1861 in pursuance of the act of Congress of June 14<sup>th</sup> 1860

E. F. Seale,  
 U.S. Survey Genl. Cal.