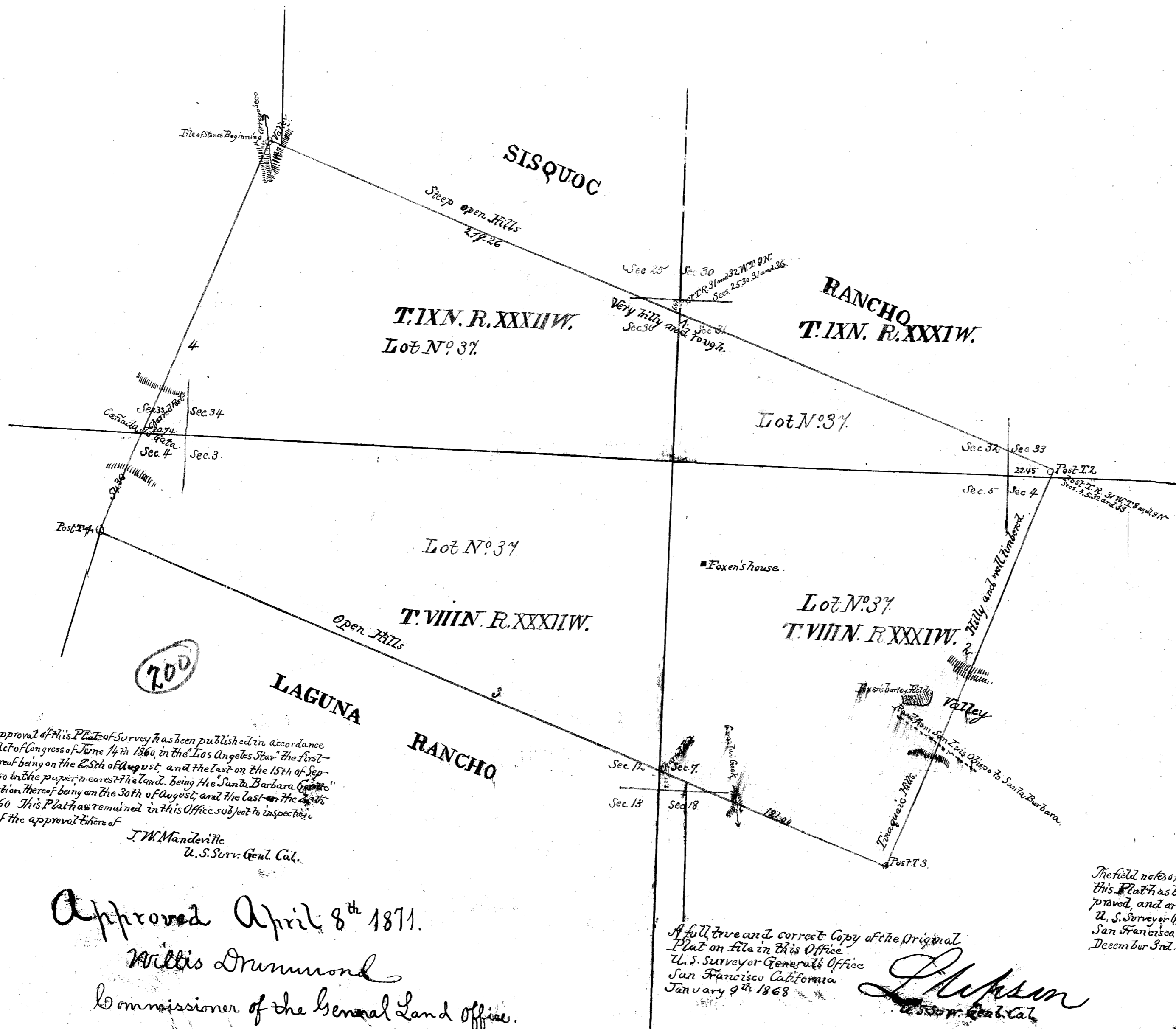


OLD FILE PLAN
PATENTS
 BOOK NO. **A**
 PAGE NO. **200**



PLAT
 of the
TINAQUAIC RANCHO
 finally confirmed to
 William D Foxen.
 Surveyed under instructions from the
U.S. SURVEYOR GENERAL
 by
Ralph W Norris, Dep. Sur.
 February, 1859.
 Containing 8,874 60/100 Acres.
 Scale 40 Chs. to an Inch.
 Revision 1868. East.

Boundaries

Nº	Course	Dist.
1	S 69° E.	420.00
2	S 21° W	211.30
3	N 69° W.	420.00
4	N 21° E.	211.30

Note. A notice of the approval of this Plat of Survey has been published in accordance with the Act of Congress of June 14th 1860, in the Los Angeles Star, the first publication thereof being on the 25th of August, and the last on the 15th of September 1860, also in the paper nearest the land, being the Santa Barbara Gazette, the first publication thereof being on the 30th of August, and the last on the 15th of September 1860. This Plat has remained in this Office subject to inspection from the date of the approval thereof.
 J. W. Mandeville
 U. S. Surv. Genl. Cal.

Approved April 8th 1871.
 Willis Drummond
 Commissioner of the General Land Office.

A full true and correct copy of the Original Plat on file in this Office
 U. S. Surveyor General's Office
 San Francisco California
 January 9th 1868
 J. P. Johnson
 U. S. Surv. Genl. Cal.

The field notes of the Tinaquaic Rancho from which this Plat has been made, have been examined and approved, and are on file in this Office
 U. S. Surveyor General's Office
 San Francisco California
 December 3rd 1859.
 J. W. Mandeville
 U. S. Surv. Genl. Cal.

