

OLD FILE PLAN
PATENTS
 BOOK NO. **A**
 PAGE NO. **210**

SAN RAFAEL RANGE

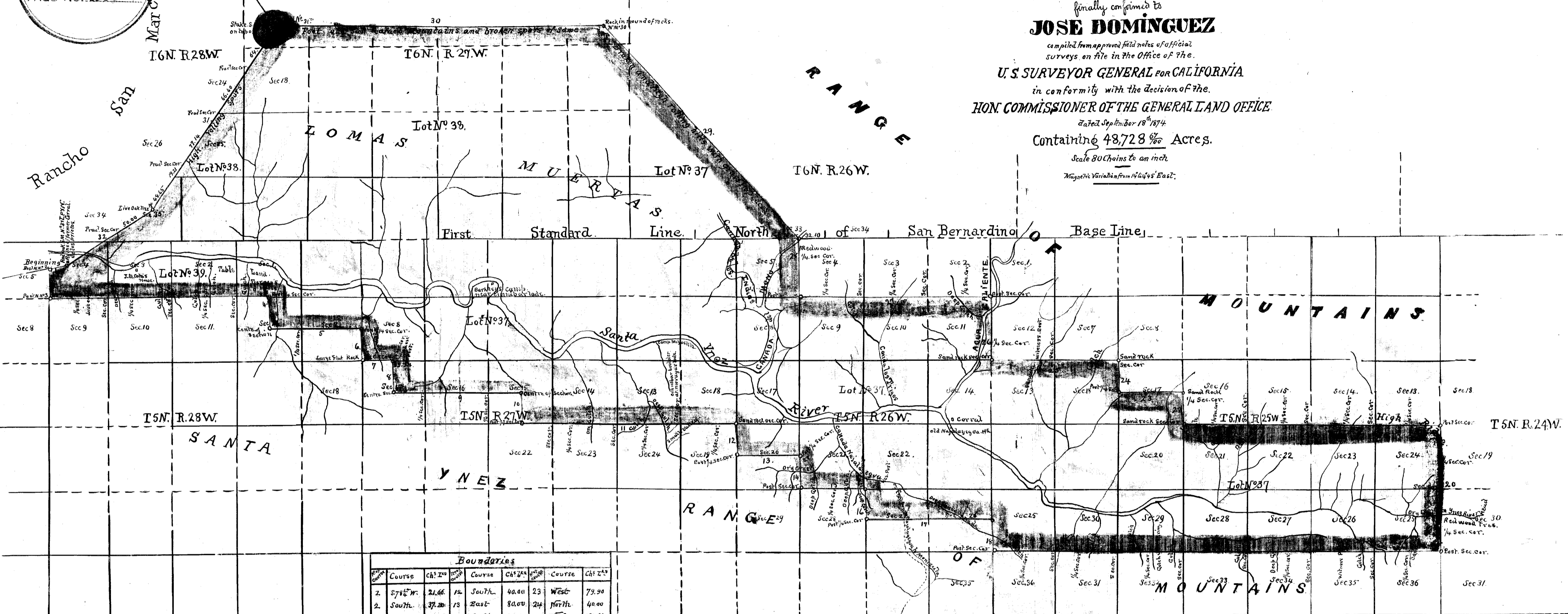
PLAT
 of the
RANCHO LOS PRIETOS Y NAJALAYEGUA

finally confirmed to
JOSE DOMINGUEZ

compiled from approved field notes of official
 surveys on file in the Office of the
 U. S. SURVEYOR GENERAL FOR CALIFORNIA
 in conformity with the decision of the
 HON. COMMISSIONER OF THE GENERAL LAND OFFICE

Dated September 18th 1874
 Containing 48,728 ^{7/8} Acres.

Scale 80 Chains to an inch
 Magnetic Variation from 1849's East.

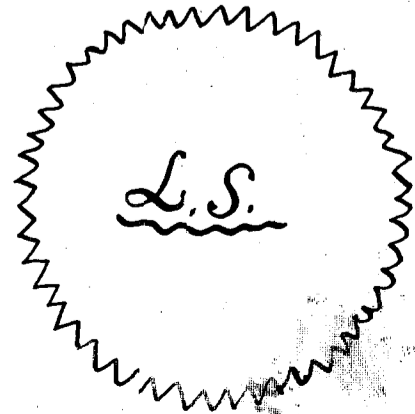


Boundaries					
Course	Ch ^s	2 ^d	Course	Ch ^s	2 ^d
1. S 71° W	21.66	12	South	40.00	23
2. South	37.20	13	East	80.00	24
3. East	273.99	14	South	40.00	25
4. South	40.00	15	East	79.50	26
5. East	112.50	16	South	40.00	27
6. South	40.00	17	East	160.07	28
7. East	29.96	18	South	40.00	29
8. South	40.00	19	East	539.02	30
9. East	160.03	20	North	160.00	31
10. South	40.00	21	West	320.24	32
11. East	267.30	22	North	40.00	
			Course	Ch ^s	2 ^d
			West	79.90	
			North	40.00	
			West	159.66	
			North	80.00	
			West	260.28	
			North	72.30	
			N 42° W	360.06	
			S 34° W	275.00	
			S 57° W	128.00	

210

Approved February 19, 1875
 S. S. Burdett
 Commissioner of the General Land Office

The field notes of surveys, from which this plat of the Rancho Los Prietos y Najalayegua has been compiled, have been examined and approved, and are on file in this Office
 U. S. Surveyor General's Office.
 San Francisco, California.
 February 6th 1875.



Just Stanton
 U.S. Surv. Gen. Cal.