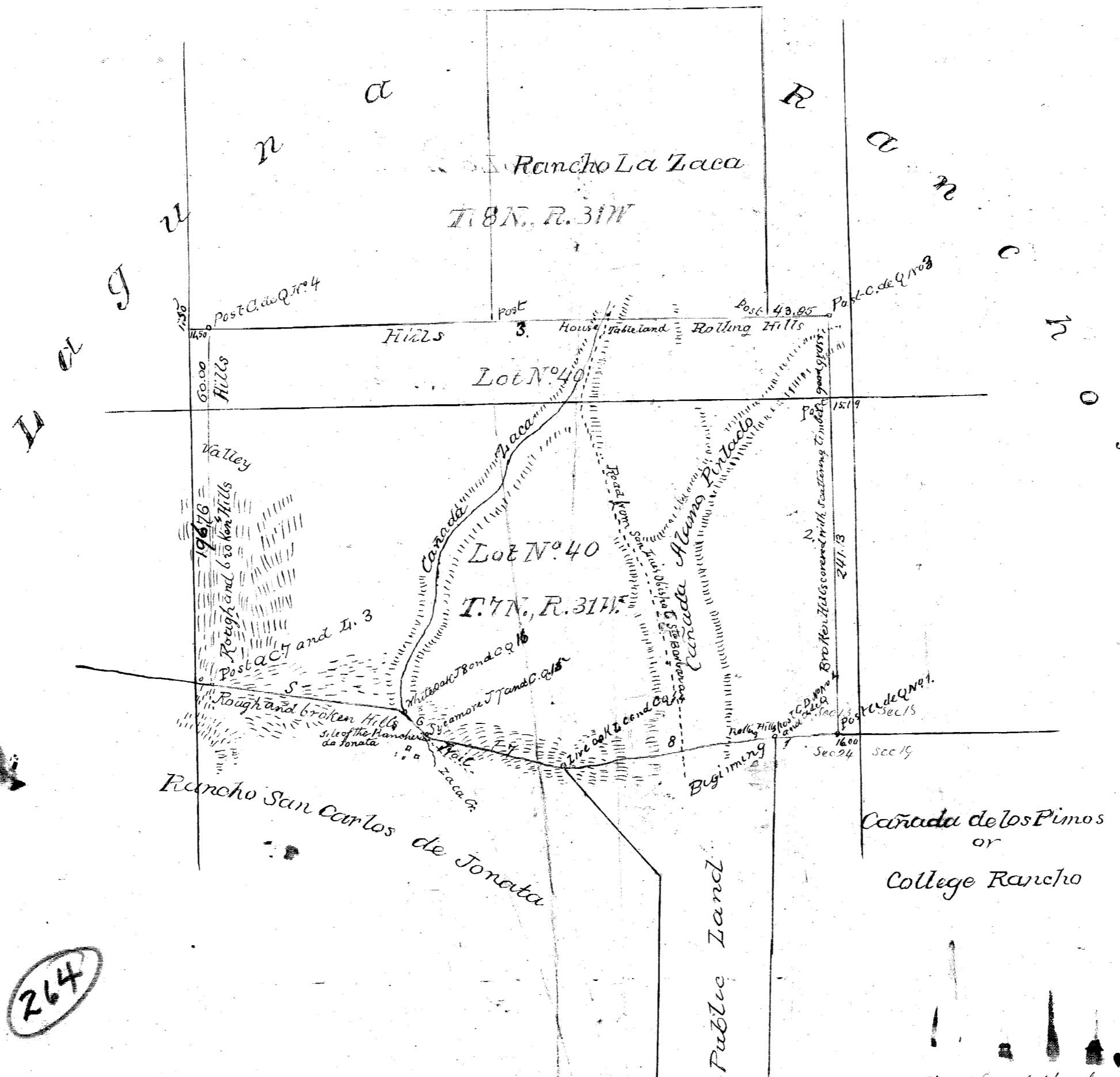


OLD FILE PLAN
PATENTS
 BOOK NO. A
 PAGE NO. 264



PLAT
 of the
RANCHO CORRAL DE QUATE

finally confirmed to
 Maria Antonia de la Guerra y Latacillade
 Surveyed under instructions from the
U.S. SURVEYOR GENERAL
 by
 G.W. Lewis, deputy Sur
 October, 1861
 Containing 13322.29 Acres
 Scale 30 chs to 1 inch
 Variation 14° 5' East

Boundaries

No	Course	Dist.	No	Course	Dist.
1	East	4475.5	5	S 52 1/2° E	110.00
2	North	2922.7	6	S 43 1/2° E	22.00
3	West	4522.9	7	S 77° E	104.00
4	South	25.76	8	N 82 1/4°	137.36
		1053.07			420.80
					4453.07

Aggregate of exterior boundaries 14.73 = 18 miles 33 chs 43 lms.

I hereby certify that in accordance with the Act of Congress of July 1st 1864 this survey and plat were advertised in the "Chronicle" published in the City and County of San Francisco for four weeks the date of the first publication being the 19th of December 1874; also in the "Santa Barbara Press" published in the County of Santa Barbara for four weeks the date of the first publication thereof being the 19th of December 1874.

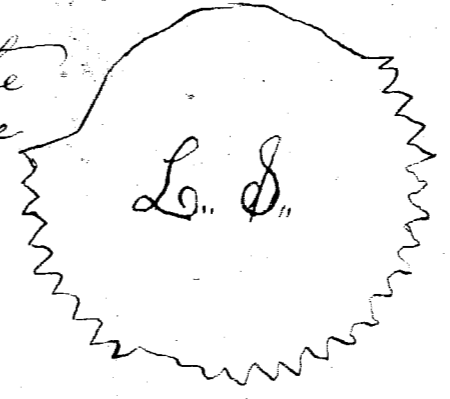
This plat remained in this office subject to inspection during ninety days from the date of the first publication
 U.S. Surveyor General's Office
 San Francisco, California
 January 14th 1876.

Jas. T. Stratton
 U.S. Sur Gen'l Cal.

The field notes of the Rancho Corral de Quate and from which this plat has been made out have been examined and approved and are on file in this office
 U.S. Surveyor General's Office
 San Francisco, California
 May 1st 1862.

E. T. Beate
 U.S. Sur Gen'l Cal.

Approved August 17, 1876
 J. Williamson
 Commissioner of the
 General Land Office



A full, true and correct copy of the original plat on file in this office
 U.S. Surveyor General's Office
 San Francisco, California
 June 5th 1876

H. C. Collins
 U.S. Sur. Gen'l Cal.

264