

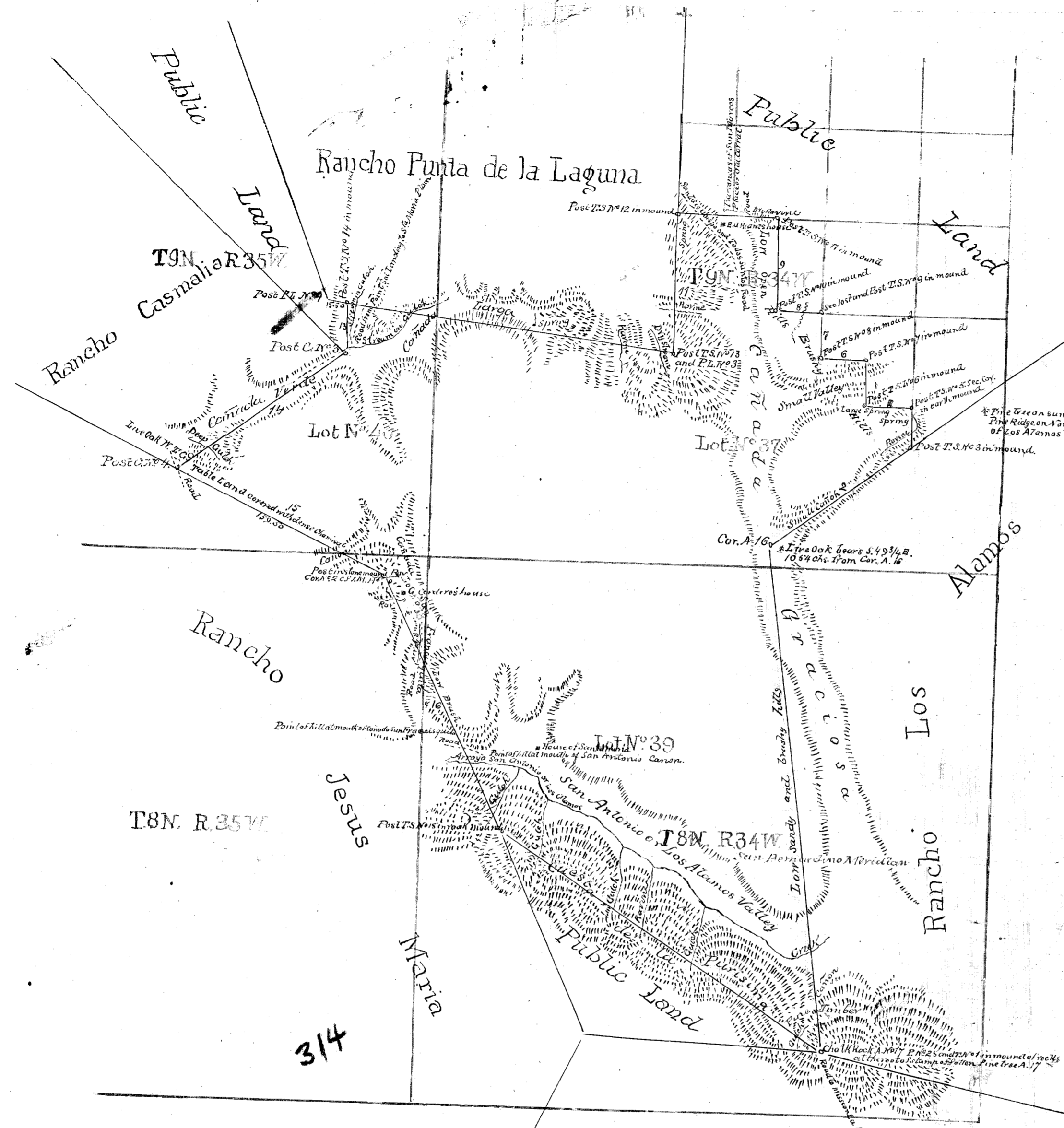
OLD FILE PLAN
PATENTS
BOOK NO. A
PAGE NO. 314

PLAT
of the
RANCHO TODOS SANTOS Y SAN ANTONIO
finally confirmed to
The HEIRS of WILLIAM E. HARTNELL dec'd
located from
examined and approved field notes of survey on file in the Office
of the
U.S. SURVEYOR GENERAL
in conformity to the decision of the
GENERAL LAND OFFICE
dated March 9th 1872
Containing 20,712 ¹¹/₁₀₀ Acres.
Scale 80 chs. to inch.
Magnetic variation from 14° 26' 15 1/2"

Approved December 20, 1876.
J. A. Williamson
Commissioner of the
General Land Office.

Boundaries

| No | Course | Dist | No | Course | Dist |
|----|------------|--------|----|------------|--------|
| 1 | N 7 1/2 W | 443.40 | 10 | West | 83.23 |
| 2 | N 55 1/2 E | 147.25 | 11 | South | 123.13 |
| 3 | North | 35.10 | 12 | N 88 1/4 W | 285.00 |
| 4 | West | 40.00 | 13 | South | 45.65 |
| 5 | North | 40.00 | 14 | S 53 N | 175.10 |
| 6 | West | 40.00 | 15 | S 67 1/2 E | 204.50 |
| 7 | North | 40.00 | 16 | S 26 1/2 E | 245.00 |
| 8 | West | 40.00 | 17 | S 57 E | 343.28 |
| 9 | North | 80.00 | | | |



The field notes of the Rancho Todos Santos y San Antonio finally confirmed to the heirs of William E. Hartnell dec'd, from which this plat has been made, have been examined and approved and are on file in this Office.
U.S. Surveyor General's Office.
San Francisco, California.
November 2nd 1876.

W. H. Beck
U.S. Surv. Gen. Cal.

1-31

3/4

L. S.