

**PLAT**  
of the  
**RANCHO LOS DOS PUEBLOS**  
finally confirmed to  
**Nicolas A. Den**  
Surveyed under instructions from the  
**U.S. SURVEYOR GENERAL**  
by  
**G.H. Thompson, Dep. Sur.**  
January 1871  
Containing 15534 1/2 Acres  
Scale 80 Chs. to 1 inch  
Variation 14° 10' to 14° 30' East.

*Approved Feb. 23. 1871*  
*J. A. Williamson*  
*Commissioner of the*  
*General Land Office.*

Thereby certify, that in accordance with the Act of Congress approved July 1<sup>st</sup> 1834, this Survey and Plat were advertised in the Alta California published in the City and County of San Francisco, for four weeks, the date of the first publication being the 12<sup>th</sup> of May 1871; also in the Santa Barbara Times, published in the County of Santa Barbara for four weeks; the date of the first publication being the 20<sup>th</sup> of May 1871.

This Plat has remained in this Office, subject to inspection, during 90 days from the date of the first publication.

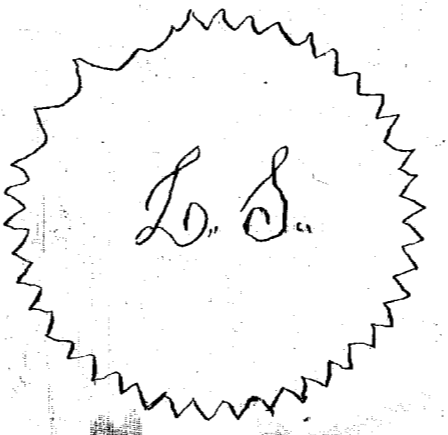
*A full, true and correct Copy of the original plat on file in this Office*  
*U. S. Surveyor General's Office*  
*San Francisco California*  
*April 15<sup>th</sup> 1876.*

*H. G. Hollins*  
*U. S. Survey Gen. Cal.*

Boundaries					
No	Course	Dist	No	Course	Dist.
1	S. 49 3/4 E	68.00	28	North	20.25
2	N. 66 1/4 W	19.00	26	West	120.38
3	S. 55 3/4 W	127.70	27	North	25.71
4	S 4 1/4 E	36.82	28	West	20.00
5	East	127.58	29	South	60.00
6	S 70 E	64.25	30	West	60.00
7	S 44 1/4 W	32.03	31	North	20.00
8	S 65 W	29.00	32	West	20.00
9	S 78 W	42.36	33	North	20.00
10	S 43 W	90.36	34	West	40.00
11	N 74 3/4 W	31.97	35	South	20.00
12	S. 85 1/4 W	30.00	36	West	120.00
13	N. 85 W	20.00	37	North	40.00
14	S 79 1/4 W	26.00	38	West	20.00
15	S 70 1/2 W	15.00	39	South	40.00
16	S 61 1/4 W	33.87	40	West	110.00
17	N. 75 W	49.07	41	North	4.29
18	S 65 1/2 W	25.00	42	West	60.00
19	S 62 1/4 W	44.13	43	South	4.29
20	S 85 W	12.00	44	West	20.00
21	N. 65 W	27.00	45	North	20.33
22	S 63 1/2 W	52.30	46	S. 88 1/4 W	126.43
23	S 71 1/4 W	47.00	47	S. 30	65.00
24	S. 65 1/4 W	44.00			

334

*J. R. Hardenbergh,*  
*U. S. Survey Gen. Cal.*



The field notes of the Rancho Los Dos Pueblos, from which this Plat has been made have been examined and approved and are on file in this Office.  
*U. S. Surveyor General's Office,*  
*San Francisco California*  
*January 11<sup>th</sup> 1872*

*J. R. Hardenbergh*  
*U. S. Survey Gen. Cal.*