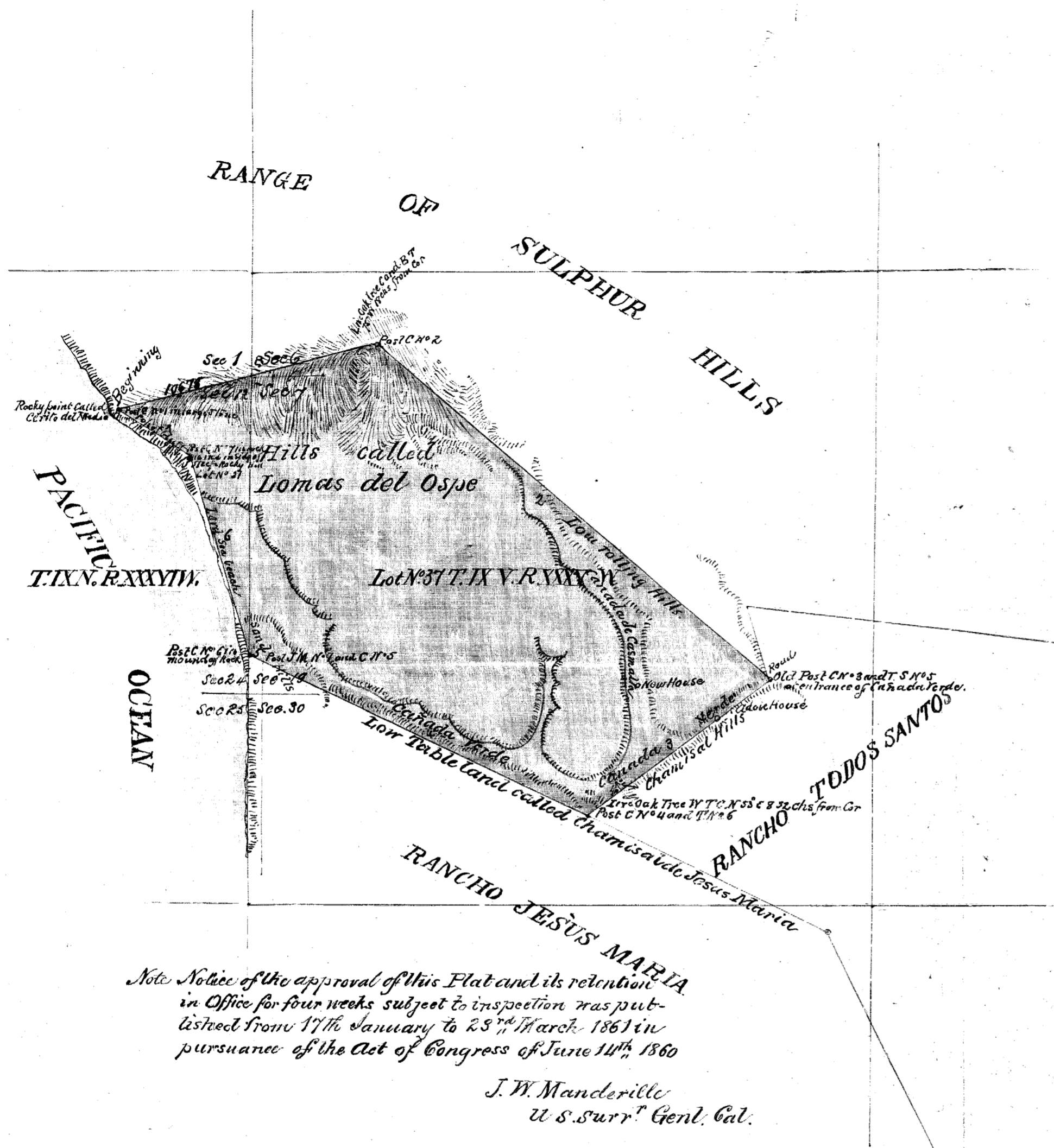


OLD FILE PLAN
PATENTS
 BOOK NO. **A**
 PAGE NO. **392**



PLAT
 of the
CASMALIA RANCHO
 finally confirmed to
ANTONIO OLIVERA.
 Surveyed under instructions from the
U.S. SURVEYOR GENERAL
 By J. E. Terrell, Dep. Sur.
 October and December 1860.
 Containing 8841 ¹/₂ Acres.
 Scale 80 Chs to 1 inch
 Variation 14° 15' East

Boundaries

No	Course	Dist
1	N. 75° E.	206.00
2	S. 50° E.	390.58
3	S. 53° W.	175.10
4	N. 64 ¹ / ₂ ° W.	277.50
5	N. 66 ¹ / ₂ ° W.	9.50
6	N. 18 ¹ / ₂ ° W.	160.00
7	N. 57 ¹ / ₂ ° W.	62.00

Aggregate 1288.65 - 16 Miles 5 Chs 65 links

Note Notice of the approval of this Plat and its retention in Office for four weeks subject to inspection was published from 17th January to 23rd March 1861 in pursuance of the Act of Congress of June 14th 1860

J. W. Manderille
 U. S. Surv. Genl. Cal.

Note
 Courses No 3, 4, 5 and 6 having been paid for in account of December 20th 1860, the Courses No 1, 2 and 7 only are charged in present account amounting to 663.55 Chains = 8 Miles 23 Chans. 55 lks.

392

A full, true and correct Copy of the Original Plat on file in this Office
 U. S. Surveyor General's Office
 San Francisco, California
 October 19th 1861.

E. F. Peale
 U. S. Surv. Genl. Cal.

The field notes of the Casmalia Rancho from which this Plat has been made, have been examined and approved and are on file in this Office.
 U. S. Surveyor General's Office
 San Francisco California
 January 24th 1861.

J. W. Manderille
 U. S. Surv. Genl. Cal.

