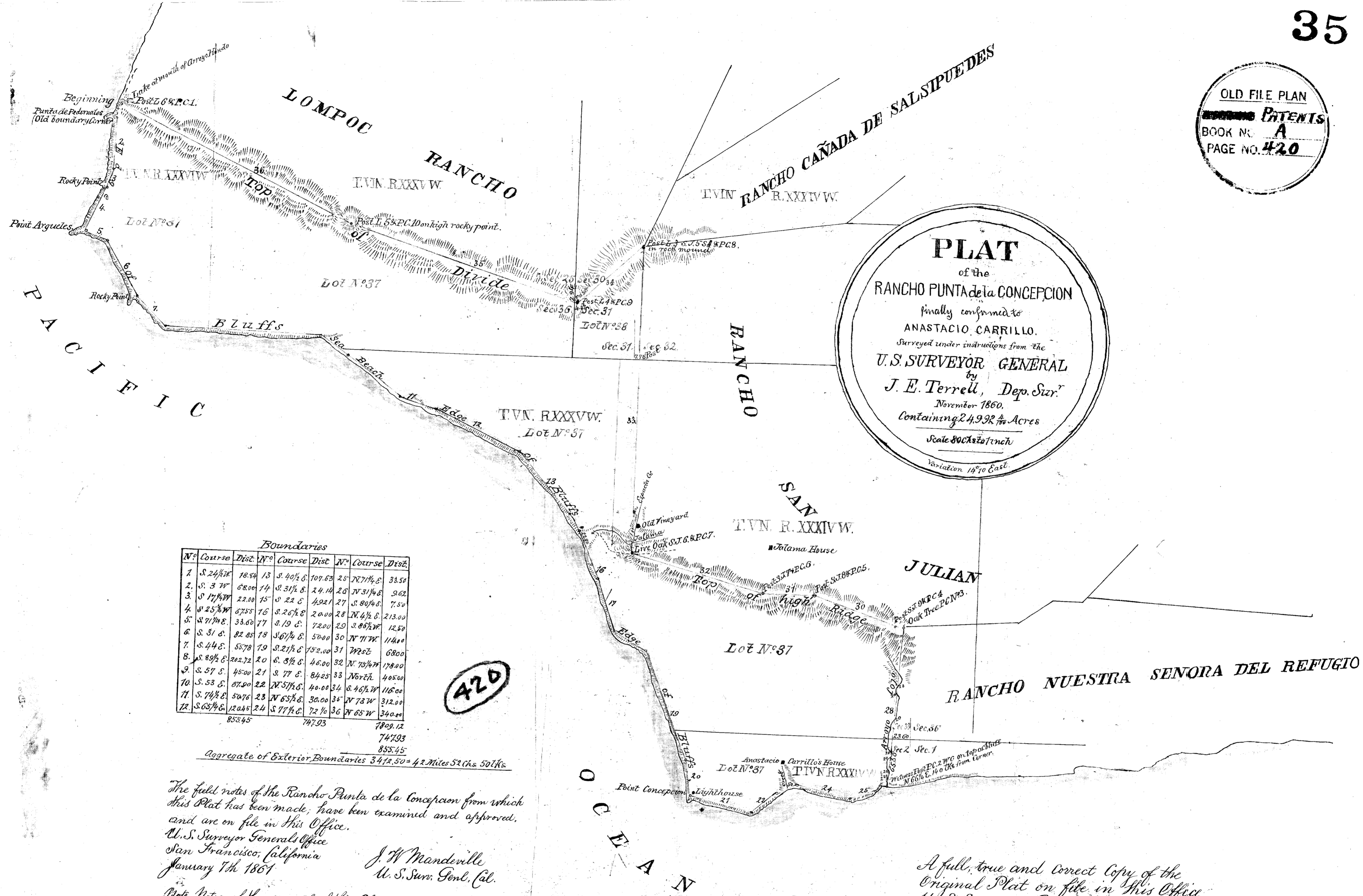


OLD FILE PLAN
PATENTS
 BOOK NO. **A**
 PAGE NO. **420**



Boundaries

No	Course	Dist.	No	Course	Dist.	No	Course	Dist.
1	S. 24 1/2 W	18.84	13	S. 40 1/2 E	109.63	25	N. 71 1/4 E	33.50
2	S. 3 W	68.00	14	S. 31 1/2 E	24.14	26	N. 31 1/4 E	9.02
3	S. 17 1/4 W	22.00	15	S. 22 E	49.21	27	S. 80 1/4 E	7.50
4	S. 25 1/2 W	67.55	16	S. 26 1/2 E	20.00	28	N. 4 1/2 E	213.00
5	S. 71 1/4 E	33.60	17	S. 19 E	7.20	29	S. 86 1/2 W	12.50
6	S. 31 E	82.85	18	S. 61 1/4 E	50.00	30	N. 71 W	114.00
7	S. 44 E	55.78	19	S. 21 1/2 E	75.20	31	W 25 E	68.00
8	S. 89 1/2 E	202.72	20	S. 8 1/2 E	46.00	32	N. 75 1/4 W	178.00
9	S. 57 E	45.00	21	S. 77 E	84.25	33	N 67 E	405.00
10	S. 53 E	87.90	22	N. 57 1/2 E	40.00	34	S. 46 1/2 W	116.00
11	S. 74 1/2 E	50.70	23	N. 65 1/2 E	30.00	35	N. 73 W	312.00
12	S. 65 1/2 E	120.45	24	S. 77 1/2 E	72 1/2	36	N. 65 W	340.00
		855.45			747.93			7829.12
								747.93
								855.45

Aggregate of Exterior Boundaries 3412.50 = 42 Miles 52 Chs 50 Lks

420

The field notes of the Rancho Punta de la Concepcion from which this Plat has been made, have been examined and approved, and are on file in this Office.
 U. S. Surveyor General's Office
 San Francisco, California
 January 7th 1861
 J. W. Manderville
 U. S. Surv. Genl. Cal.

Notice of the approval of this Plat and its retention in Office for four weeks subject to inspection was published from the 2nd to the 28th of February 1861 in pursuance of the Act of Congress of June 14th 1860
 J. W. Manderville
 U. S. Surv. Genl. Cal.

A full, true and correct Copy of the Original Plat on file in this Office.
 U. S. Surveyor General's Office
 San Francisco California
 November 2nd 1861
 E. J. Reale
 U. S. Surv. Genl. Cal.

