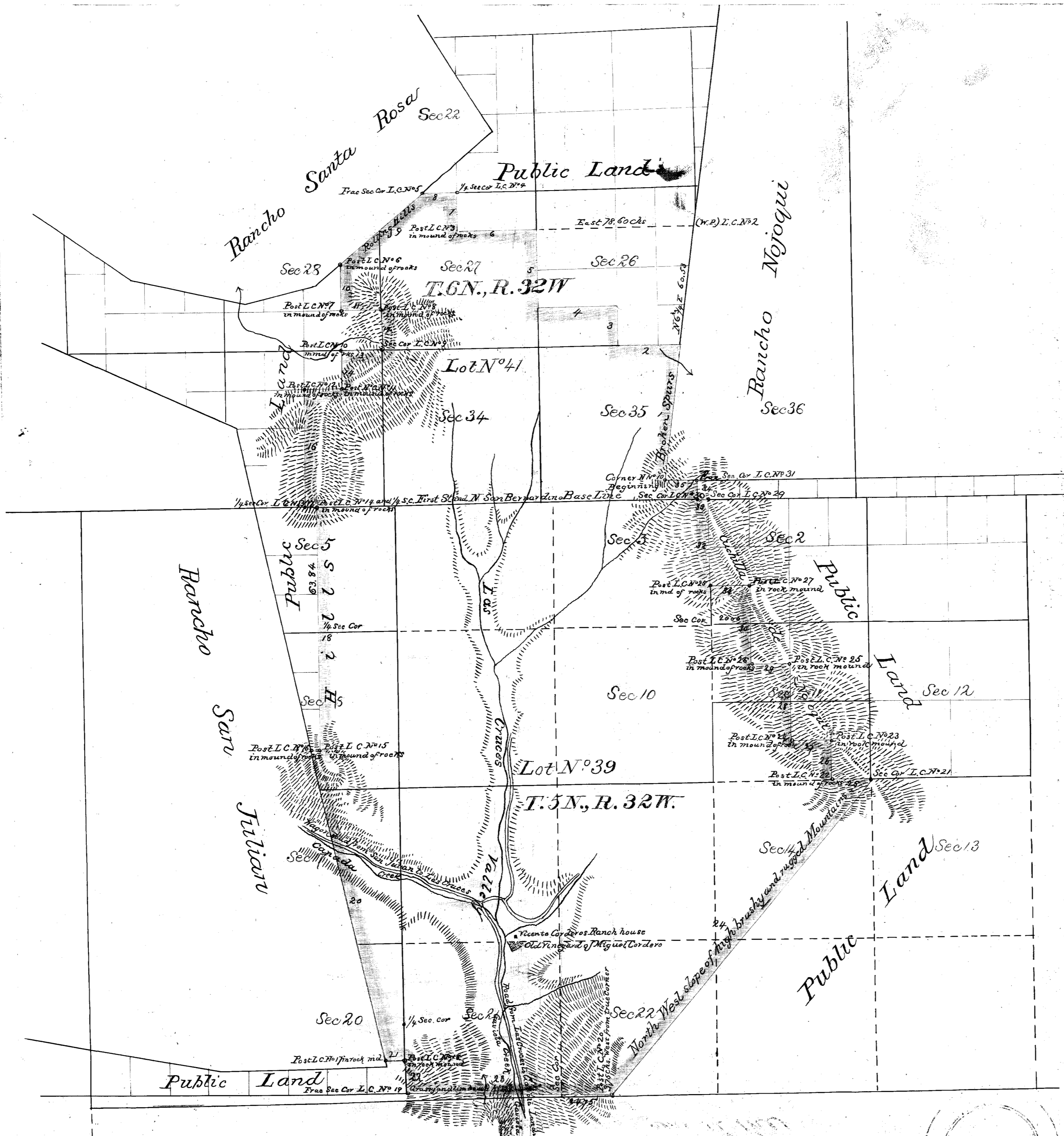


OLD FILE PLAN
PATENTS
BOOK NO. **A**
PAGE NO. **584**



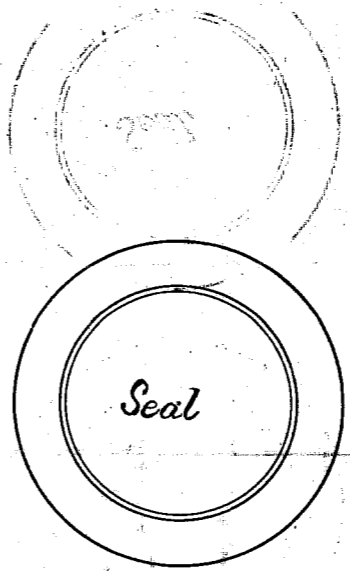
PLAT
of the
RANCHO LAS CRUCES
in Santa Barbara County, California
finally confirmed to
VICENTE CORDERO et al.
Surveyed under instructions from the
U.S. SURVEYOR GENERAL
By **W.H. Norway, Dep. Sur.**
August 1881
as demanded in conformity with the instructions of the Hon.
Commissioner of the General Land Office of March 23, 1883
Containing **8512.81 acres**
Scale 40 Chs to 1 Inch
May 16, 1883

584

Boundaries of the Rancho Las Cruces

Nº	Course	Dist	Nº	Course	Dist	Nº	Course	Dist
1	N 6 1/4 E	69.89	13	West	20.00	25	West	20.00
2	West	31.58	14	South	20.00	26	North	20.00
3	North	20.00	15	West	20.00	27	West	20.00
4	West	40.00	16	South	60.00	28	North	40.00
5	North	40.00	17	East	6.03	29	West	20.00
6	West	40.00	18	South	123.84	30	North	40.00
7	North	20.00	19	West	5.30	31	West	20.00
8	West	17.59	20	S 12 1/2 E	163.90	32	North	43.75
9	S 49 1/2 W	55.80	21	East	10.19	33	West	5.35
10	South	23.77	22	South	17.47	34	North	10.63
11	East	20.00	23	S 88 1/4 E	109.78	35	West	16.73
12	South	20.00	24	N 40 E	210.28			

Rancho Nuestra Señora del Refugio
Approved July 7th 1883,
J. C. W. Farland
Commissioner of the
General Land Office



The above plat of the Rancho Las Cruces finally confirmed to Vicente Cordero et al. has been correctly compiled from examined and approved field notes of surveys on file in this office in conformity with the instructions from the Hon. Commissioner of the General Land Office dated March 23, 1883.
U. S. Surveyor General's Office
San Francisco, California
May 12, 1883

W. T. Brown
U. S. Survey Genl. Cal.