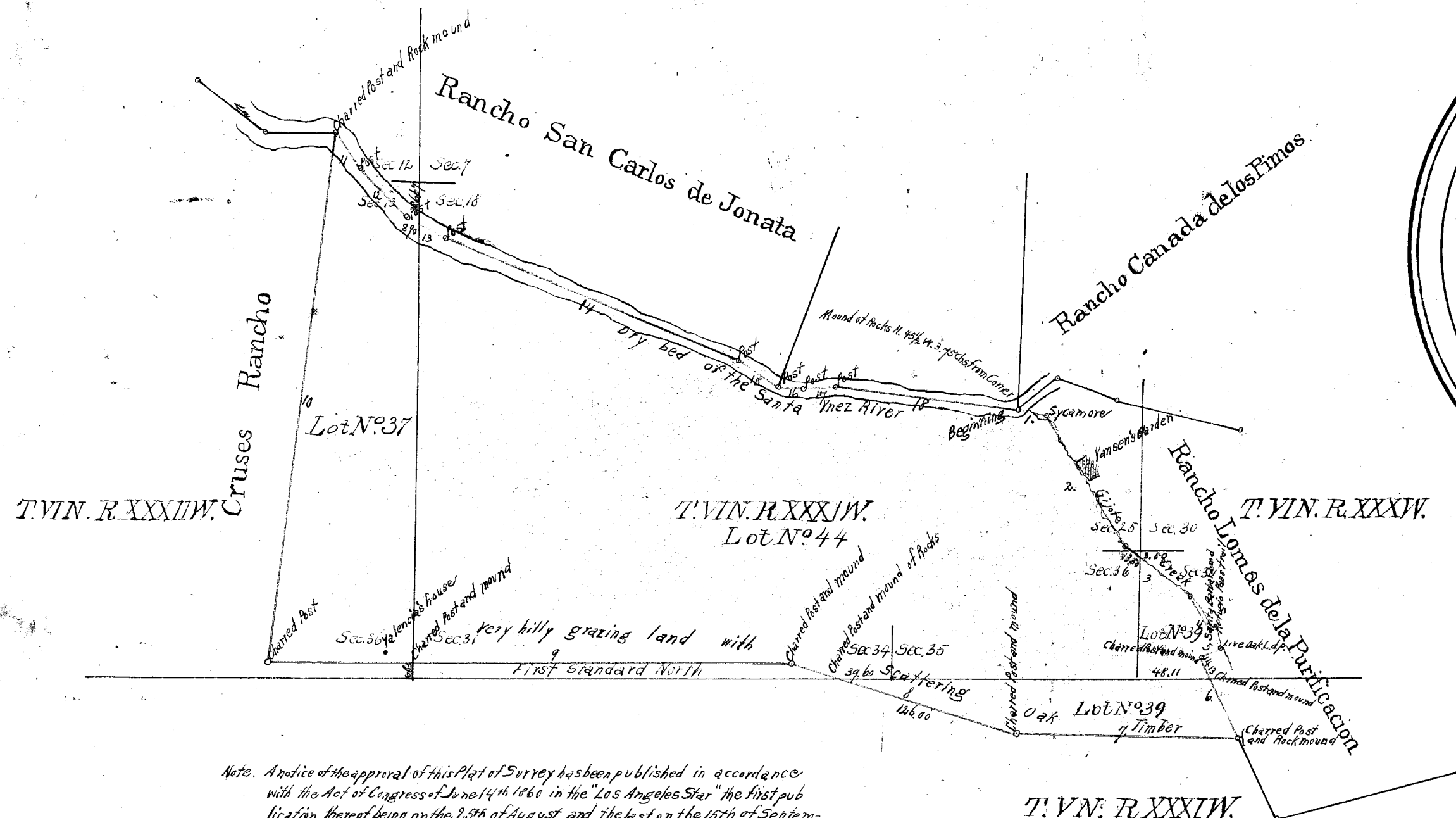


OLD FILE PLAN
PATENTS
 BOOK NO. **A**
 PAGE NO. **780**



PLAT
 of the
NOJOQUI RANCHO
 finally confirmed to
 Raymundo Carrillo.
 Surveyed under instructions from the
U.S. SURVEYOR GENERAL
 by
 Ralph W. Norris, Dep. Sur.
 October, 1858.
 Containing 13,284³⁴/₁₀₀ Acres.
 Scale 80 Chats. 1 inch
 Variation 14° 26' East.

Boundaries

No	Course	Distance
1	S 23° E	20.00
2	S 30 1/2° E	100.00
3	S 30 3/4° E	50.00
4	S 32 1/2° E	40.00
5	S 67° W	14.00
6	S 23 1/2° E	60.00
7	N 88° W	147.00
8	N 73° W	155.00
9	West	344.00
10	N 7 1/2° E	362.89
11	S 32° E	29.00
12	S 45° E	45.00
13	S 29 1/4° E	27.00
14	S 67 1/4° E	209.50
15	S 56° E	30.50
16	S 74 3/4° E	12.00
17	N 84 1/2° E	20.00
18	S 83° E	122.00

Note. Notice of the approval of this Plat of Survey has been published in accordance with the Act of Congress of June 14th 1866 in the "Los Angeles Star" the first publication thereof being on the 23rd of August, and the last on the 15th of September 1866. Also in the paper nearest the land, being the "Santa Barbara Gazette" the first publication thereof being on the 30th of August, and the last on the 24th of September 1866. This Plat has remained in this office subject to inspection from the date of the approval thereof.

J. W. Mandeville
 U. S. Surv. Genl. Cal.

780

The field notes of the Nojoqui Rancho from which this Plat has been made, have been examined and approved, and are on file in this office.
 U. S. Surveyor General's Office,
 San Francisco, California,
 December 3rd, 1857

J. W. Mandeville
 U. S. Surv. Genl. Cal.

A full true and correct Copy of the original Plat.
 on file in this office
 U. S. Surveyor General's Office
 San Francisco, California
 April 13th 1869

Shuman Day
 U. S. Surv. Genl. Cal.

Approved September 11th 1869

J. J. Wilson
 Commissioner of the General Land Office