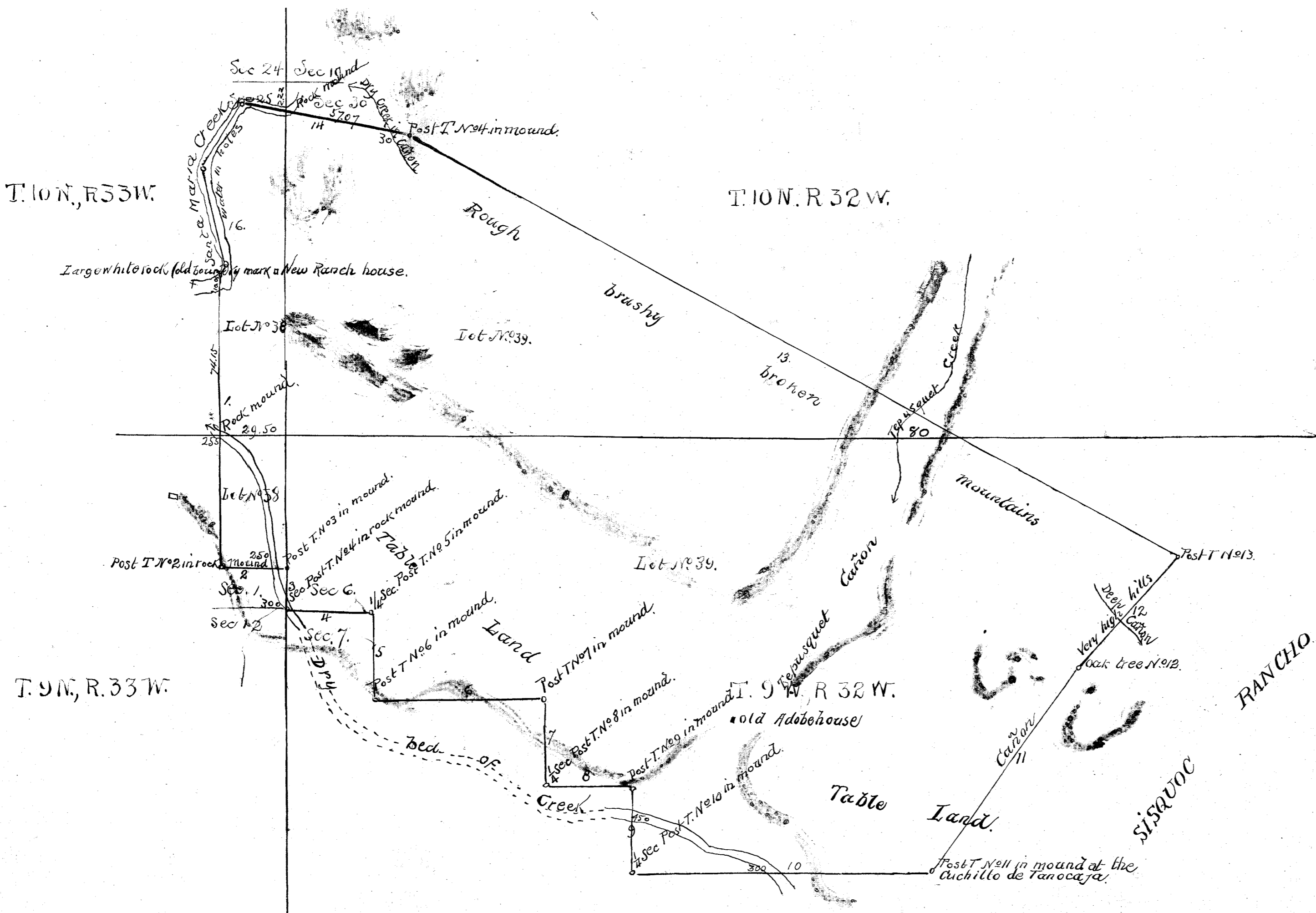


OLD FILE PLAN
PATENTS
 BOOK NO. **F**
 PAGE NO. **36/37**

PLAT
 of the
TEPUSQUET RANCHO
 finally confirmed to
ANTONIO MARIA COTA et al
 Surveyed under instructions from the
U.S. SURVEYOR GENERAL
 by
J. E. Terrell, Dep. Sur.
 September 1860
 containing 8900⁷⁵/₁₀₀ Acres.
 Scale 40 chs to 1 inch
 Variation 14° 10' East.

Patent
 F
 Page 36-37



Field notes

No.	Course.	Dist.
1	South	134.00
2	East	24.50
3	South	20.00
4	East	40.00
5	South	40.00
6	East	80.00
7	South	40.00
8	East	40.00
9	South	40.00
10	East	138.00
11	N. 36° E.	114.10
12	N. 41 1/2° E.	64.00
13	N. 61 3/4° W.	402.40
14	N. 78° W.	78.00
15	S. 51 3/4° W.	35.00
16	S. 14 1/2° E.	45.00
17	S. 24 1/2° W.	43.00

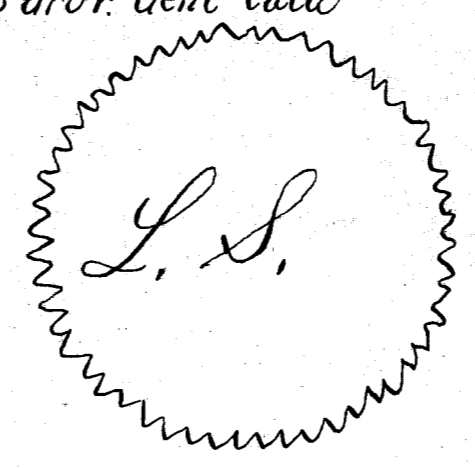
Aggregate 1349.30 16mils 69 chs 30 1/2's.

Note. Notice of the approval of this Plat and its retention in office for four weeks subject to inspection was published from January 17th 1861 to February 7th 1861, in pursuance of the Act of Congress of June 14th 1860.

J.W. Mandeville
 U.S. Survey Genl. Calia

The Field notes of the Tepusquet Rancho and from which this Plat has been made out, have been examined and approved and are on file in this office.
 U.S. Surveyor General's Office
 San Francisco California
 December 5th 1860.

J.W. Mandeville
 U.S. Survey Genl. Calia



I hereby certify this to be a full true and correct copy of the original Plat on file in this office.
 U.S. Surveyor General's Office
 San Francisco California
 June 23rd 1870.

Sherman Day
 U.S. Survey Genl. Calia