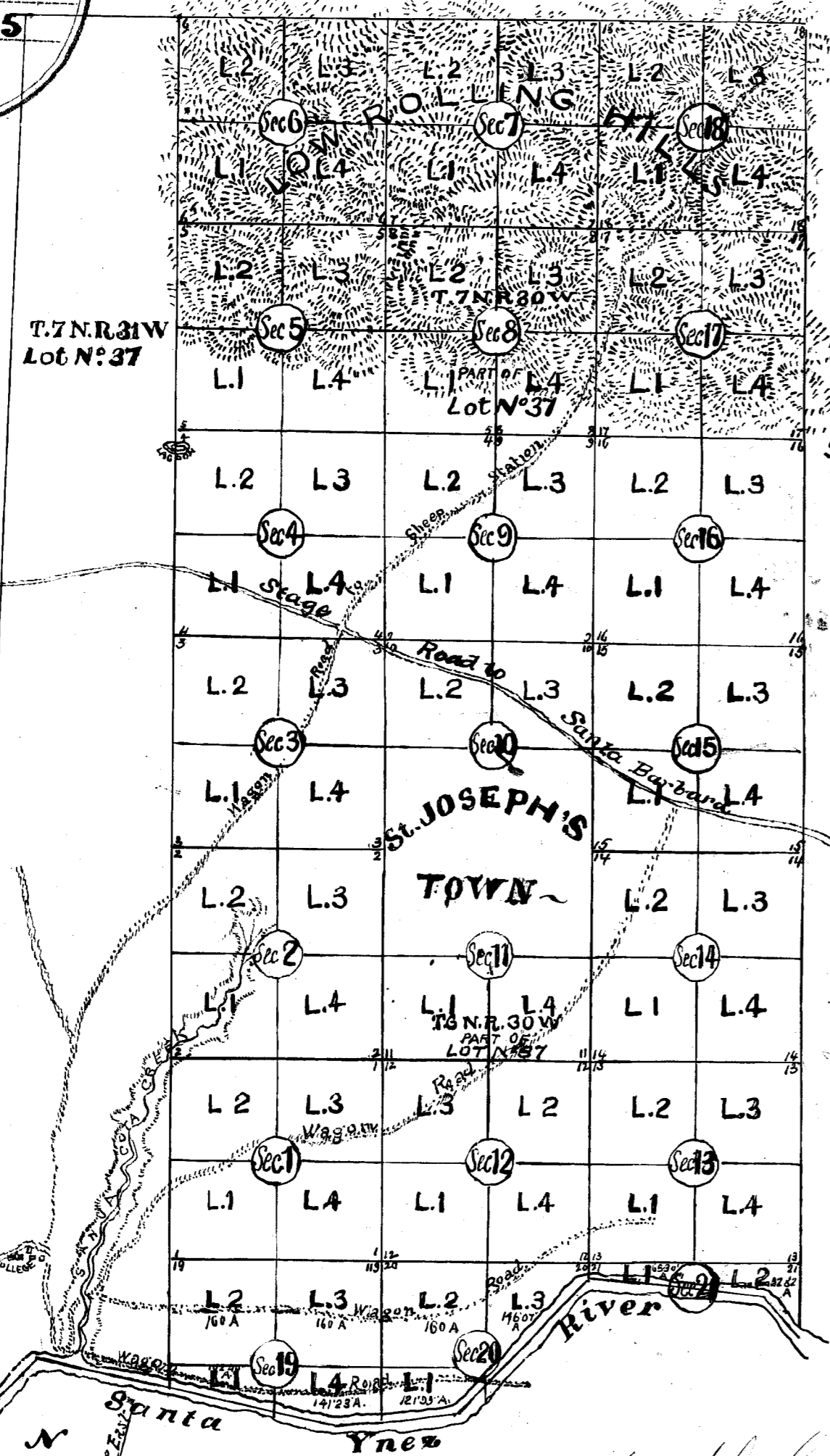


OLD FILE PLAN  
Misc.  
BOOK NO. B  
PAGE NO. 345



MAP  
OF THE  
**CANADA DE LOS PINOS**  
OR THE  
**COLLEGE RANCHO**  
SITUATED IN  
**SANTA YNEZ VALLEY**  
SANTA BARBARA COUNTY  
BOUNDED BY THE  
SANTA YNEZ RIVER ON THE SOUTH  
AND BY  
SAN RAFAEL MOUNTAINS ON THE NORTH  
APPROXIMATELY 16 MILES E. N. E. FROM  
**GAVIOTA STEAMER LANDING**  
Surveyed by  
W. P. CASEY, C. E. U. S. Dep. M. Surv.  
December 1876.  
Containing  
12660 1/2 Ac.  
Scale 1 inch = 1/2 mile  
VARIATION 14° 30' E  
W. P. Casey

ROAD TO  
BALLARD'S STATION  
SANTA MARIA,  
SAN DIEGO,  
AC. E. C. DE

ROAD TO  
GAVIOTA STEAMER LANDG  
ABOUT 10 MILES AND TO THE  
MISSION ABOUT 1/2 MILE.

OLD FILE PLAN  
Misc.  
BOOK NO. B  
PAGE NO. 284

Filed for Record Oct. 23<sup>d</sup> 1875  
by J. S. Starns & O. Bender  
copy

State Street

50x100	50x100	50x100	50x100	50x100	50x100	50x100	50x100	50x100	50x100
50x100	50x100	50x100	50x100	50x100	50x100	50x100	50x100	50x100	50x100
50x100	50x100	50x100	50x100	50x100	50x100	50x100	50x100	50x100	50x100
50x100	50x100	50x100	50x100	50x100	50x100	50x100	50x100	50x100	50x100
50x100	50x100	50x100	50x100	50x100	50x100	50x100	50x100	50x100	50x100
50x100	50x100	50x100	50x100	50x100	50x100	50x100	50x100	50x100	50x100
50x100	50x100	50x100	50x100	50x100	50x100	50x100	50x100	50x100	50x100
50x100	50x100	50x100	50x100	50x100	50x100	50x100	50x100	50x100	50x100
50x100	50x100	50x100	50x100	50x100	50x100	50x100	50x100	50x100	50x100
50x100	50x100	50x100	50x100	50x100	50x100	50x100	50x100	50x100	50x100

Melena Avenue

50x100	50x100	50x100	50x100	50x100	50x100	50x100	50x100	50x100	50x100
50x100	50x100	50x100	50x100	50x100	50x100	50x100	50x100	50x100	50x100
50x100	50x100	50x100	50x100	50x100	50x100	50x100	50x100	50x100	50x100
50x100	50x100	50x100	50x100	50x100	50x100	50x100	50x100	50x100	50x100
50x100	50x100	50x100	50x100	50x100	50x100	50x100	50x100	50x100	50x100
50x100	50x100	50x100	50x100	50x100	50x100	50x100	50x100	50x100	50x100
50x100	50x100	50x100	50x100	50x100	50x100	50x100	50x100	50x100	50x100
50x100	50x100	50x100	50x100	50x100	50x100	50x100	50x100	50x100	50x100
50x100	50x100	50x100	50x100	50x100	50x100	50x100	50x100	50x100	50x100
50x100	50x100	50x100	50x100	50x100	50x100	50x100	50x100	50x100	50x100

Anacapa St

Subdivision of  
Melena Avenue  
City Block No 305  
St. Joseph's  
St. Joseph's

State of California,  
CITY AND COUNTY OF SAN FRANCISCO.

On this Sixteenth day of January  
A. D. one thousand eight hundred and seventy seventy, before me,  
John S. Alenany, a Notary Public, in and for said City and County, personally appeared  
John S. Alenany known to me to be the  
Archbishop of San Francisco  
He executed the within instrument, and acknowledged to me that such Corporation executed the

In Witness Whereof, I have hereunto set my hand,  
and affixed my Official Seal, the day and year  
last above written.

John S. Alenany  
NOTARY PUBLIC.

Joseph S. Alenany  
The Roman Catholic Archbishop of  
San Francisco.

Recorded at request of J. S.  
Alenany April 6<sup>th</sup> A. D. 1877  
at 10 A. M.

H. P. Stone County Recorder  
By John J. Anderson  
Deputy

