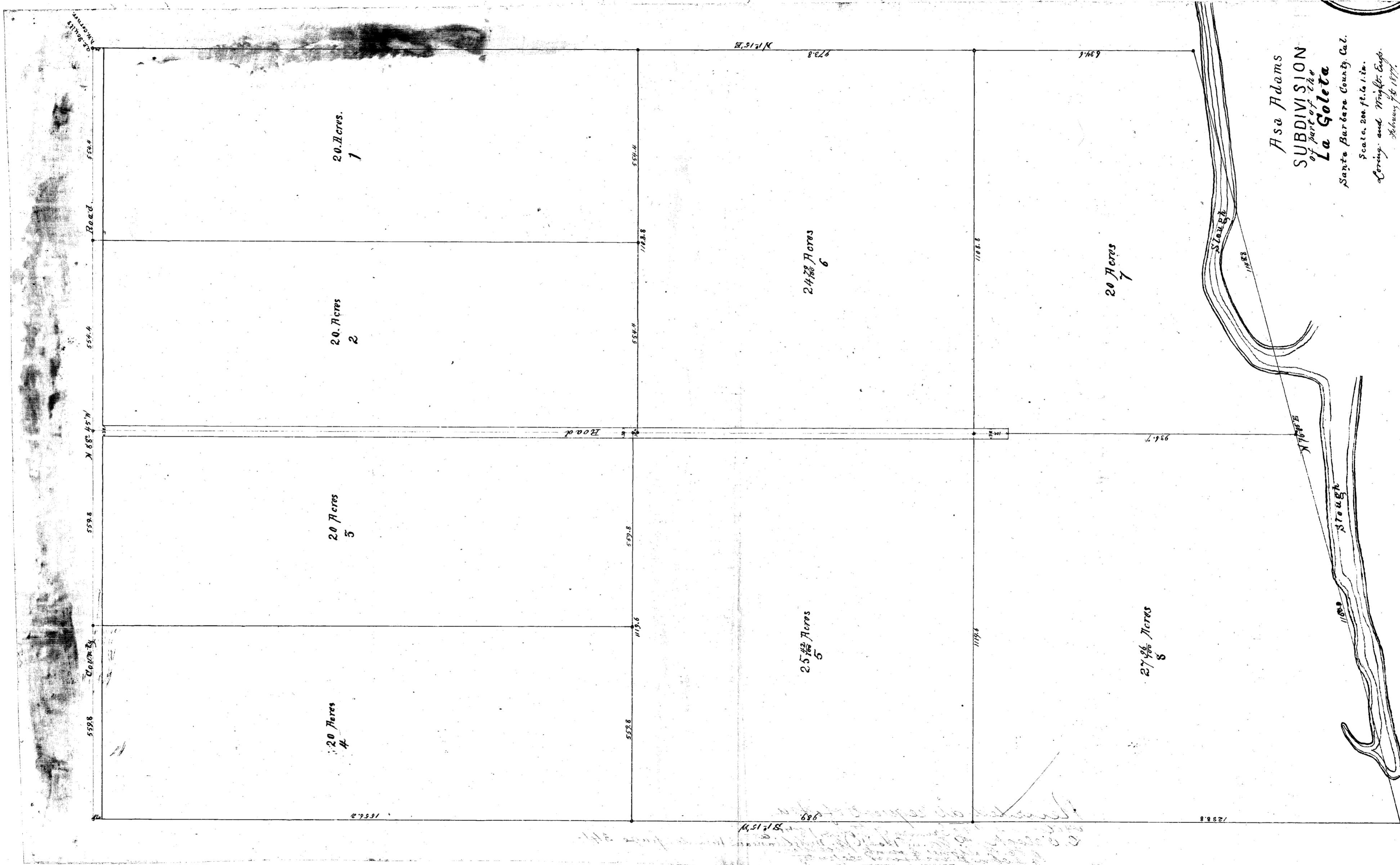


OLD FILE PLAN  
 Misc.  
 BOOK NO. B  
 PAGE NO. 341



Asa Adams  
 SUBDIVISION  
 of part of the  
 La Galleta  
 Santa Barbara County Cal.  
 Scale, 200 ft. to 1 in.  
 Coring and Wright, Eng.  
 Albany, N.Y. 1877.