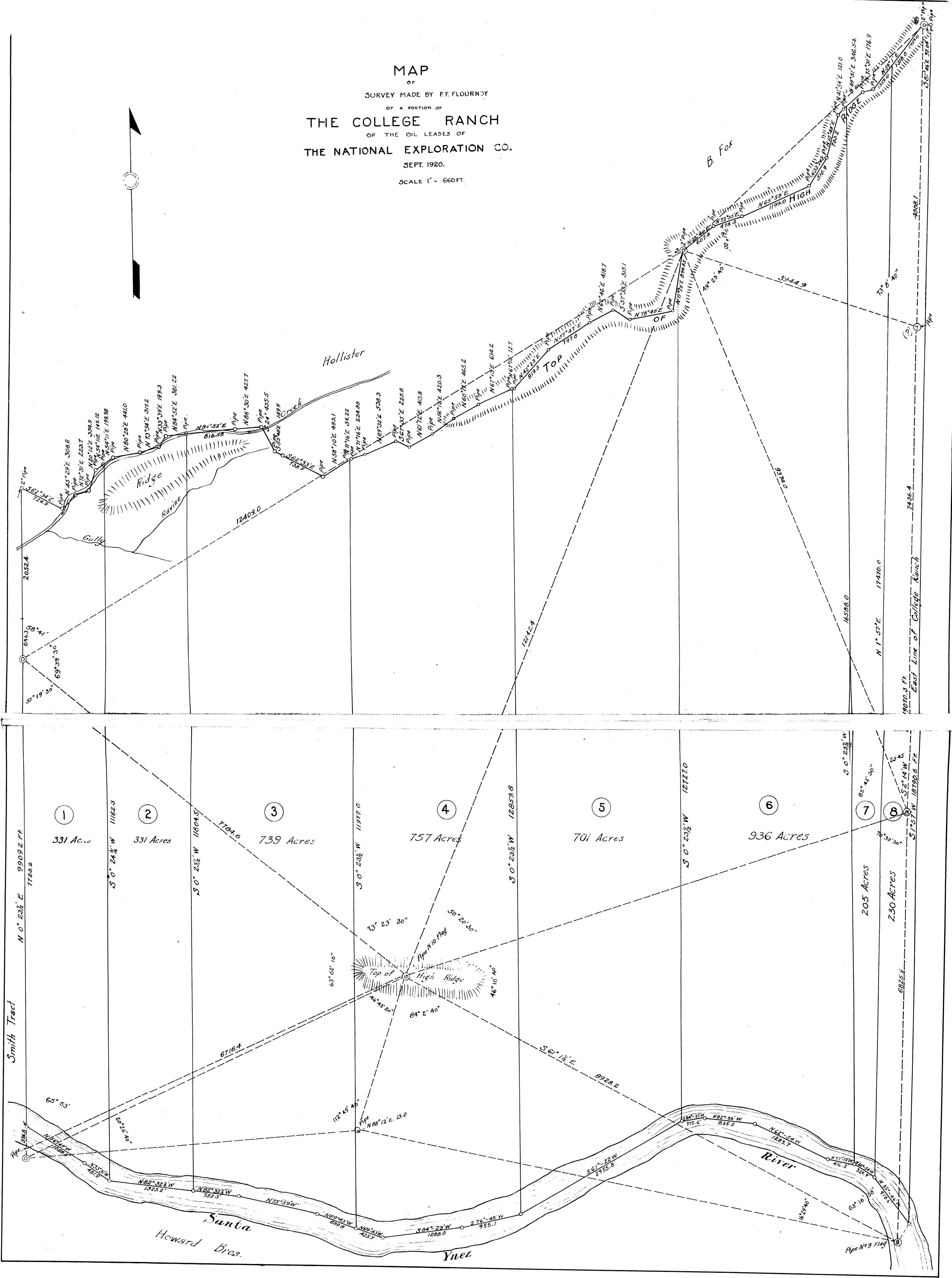


**MAP**  
 OF  
 SURVEY MADE BY E.F. FLOURNOY  
 OF A PORTION OF  
**THE COLLEGE RANCH**  
 OF THE OIL LEASES OF  
**THE NATIONAL EXPLORATION CO.**  
 SEPT. 1920.  
 SCALE 1" = 660 FT.



OLD FILE PLAN  
 Leases  
 BOOK NO. **K**  
 PAGE NO. **482**