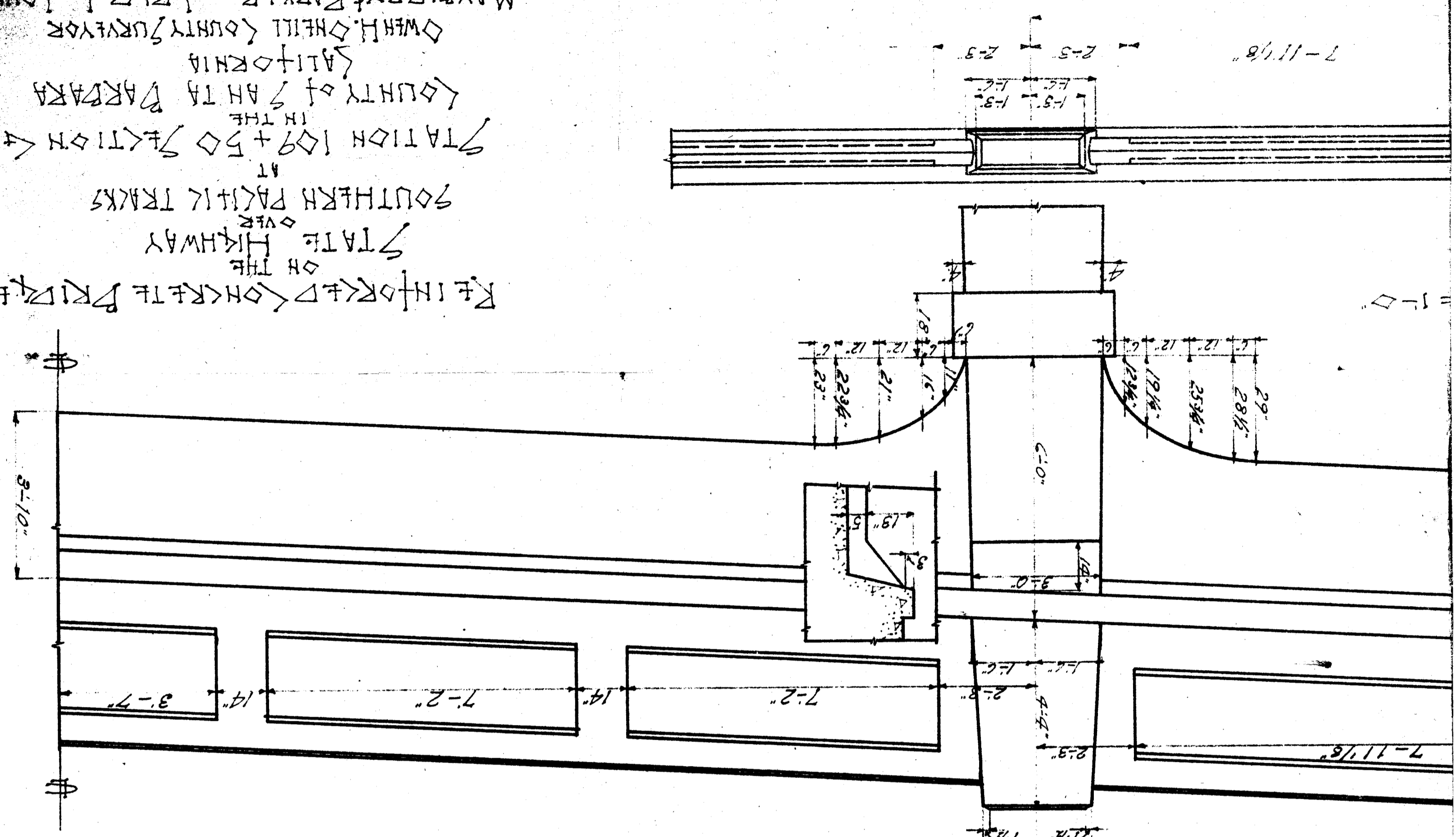
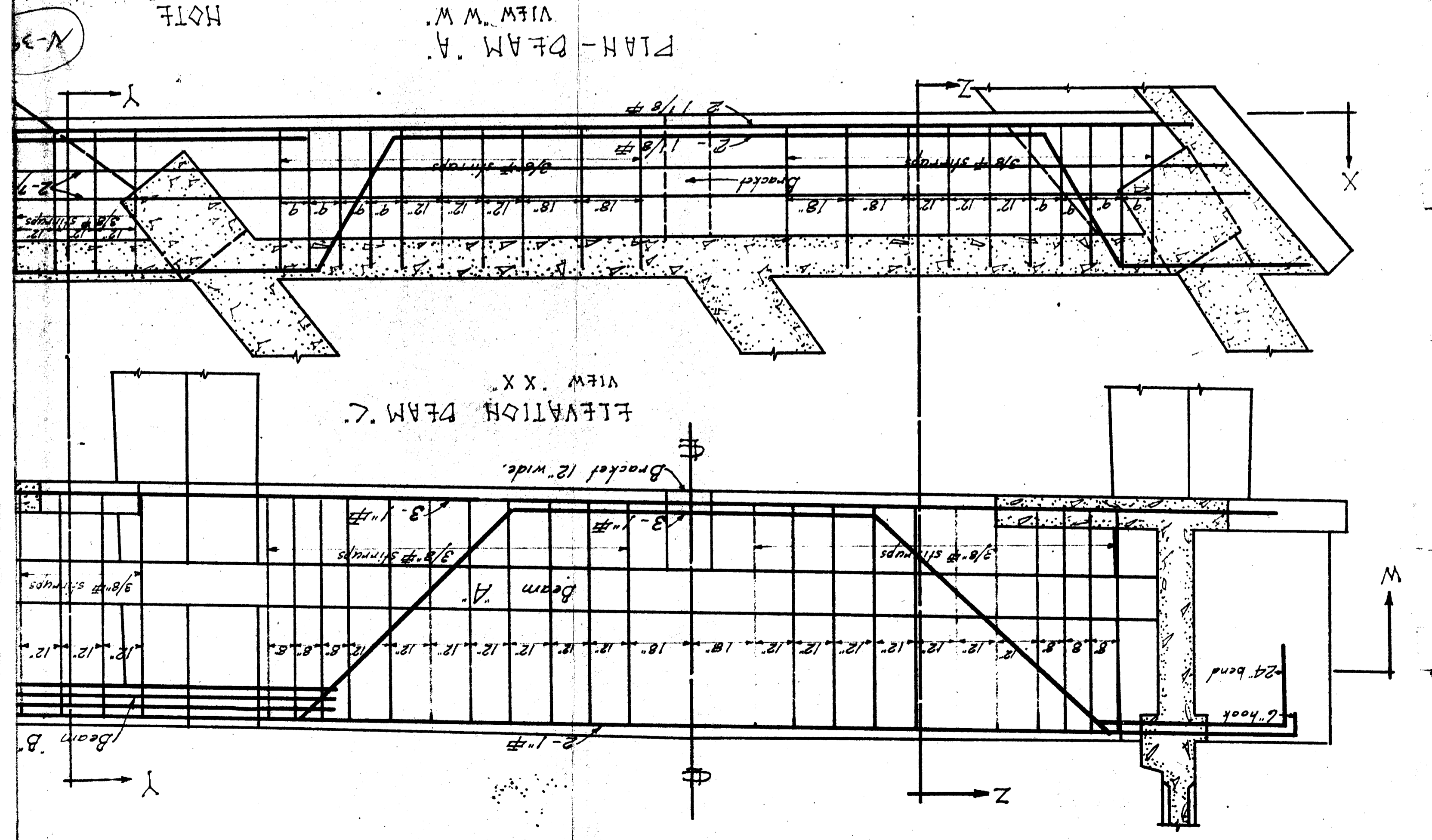
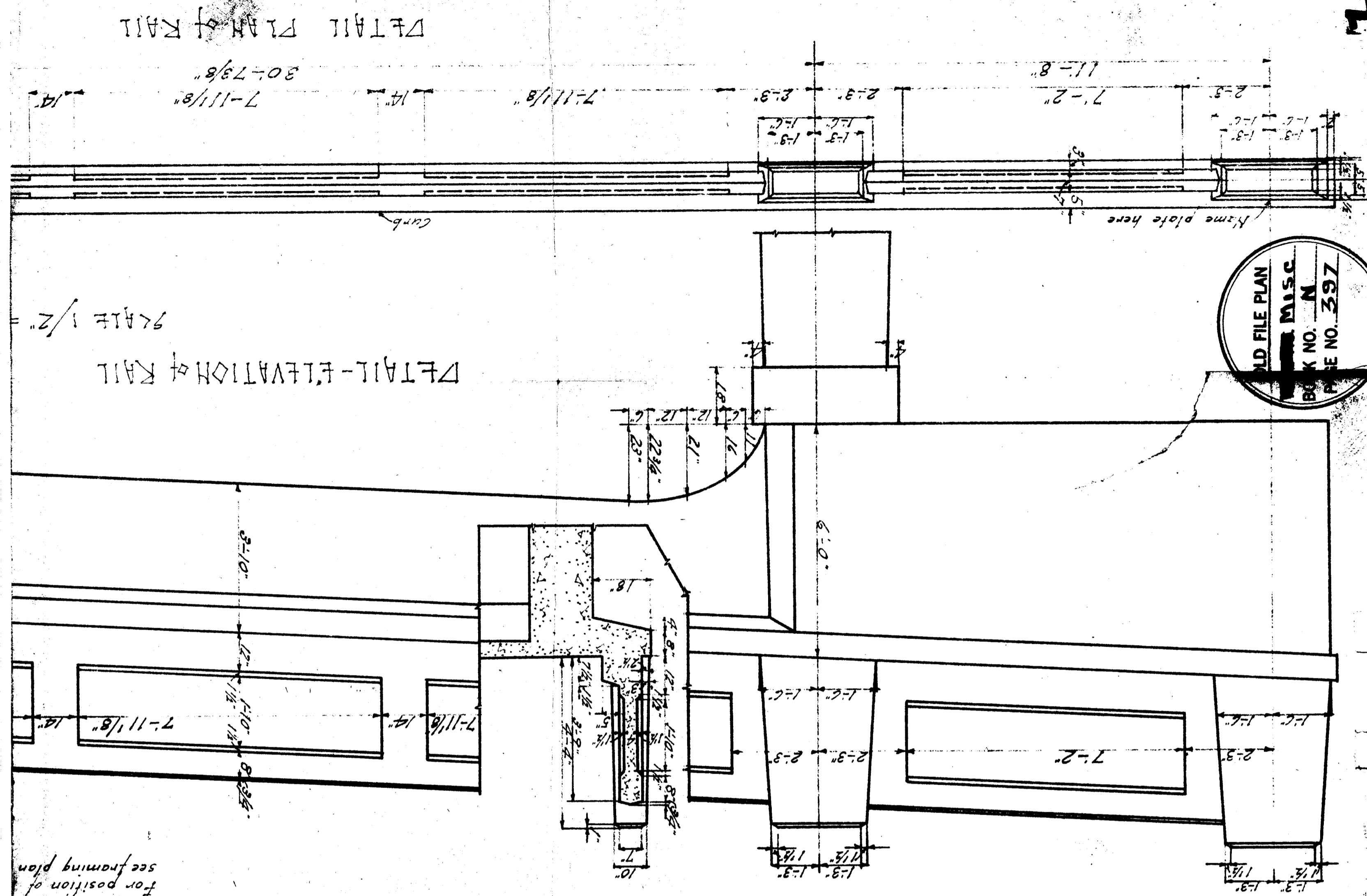
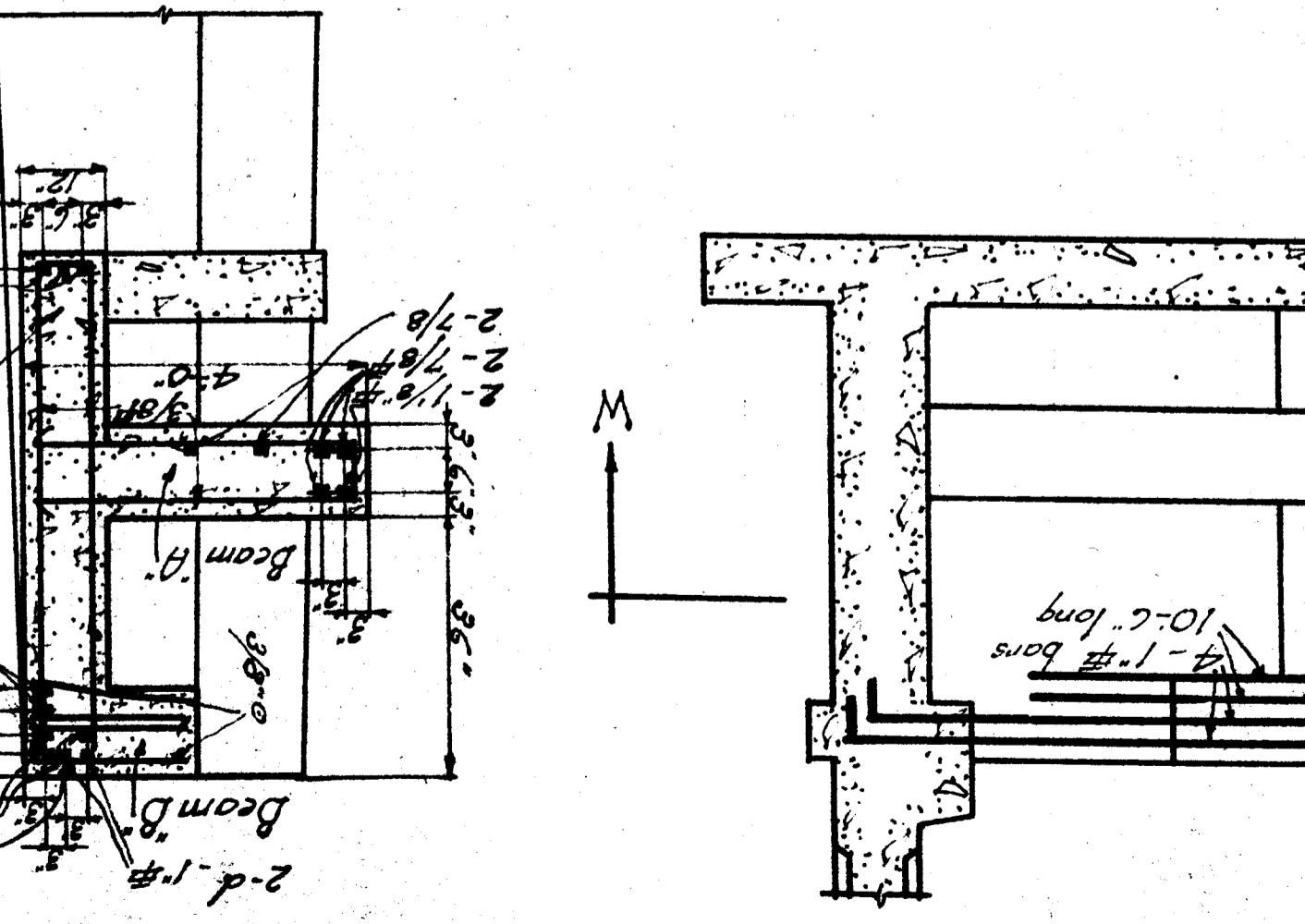
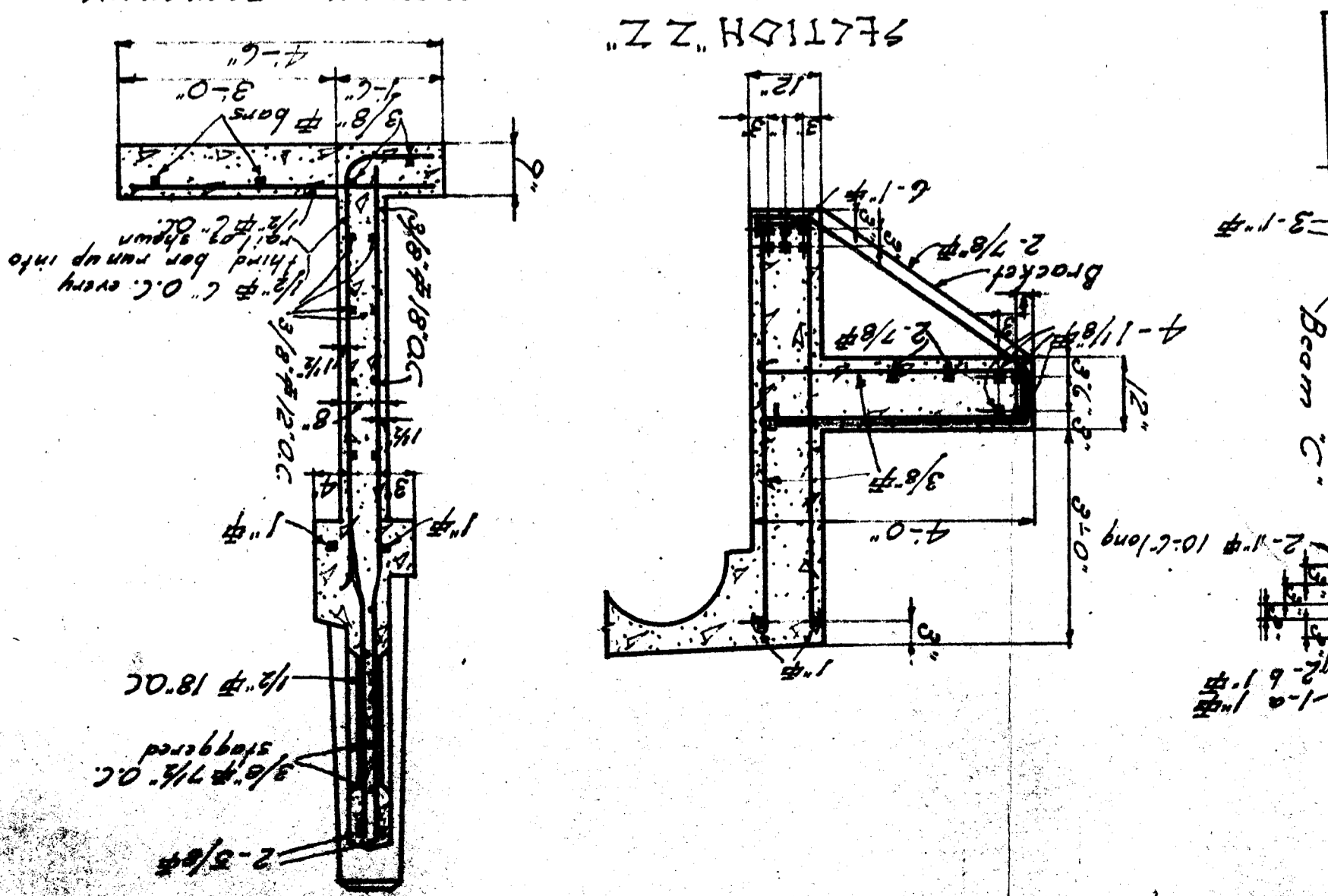
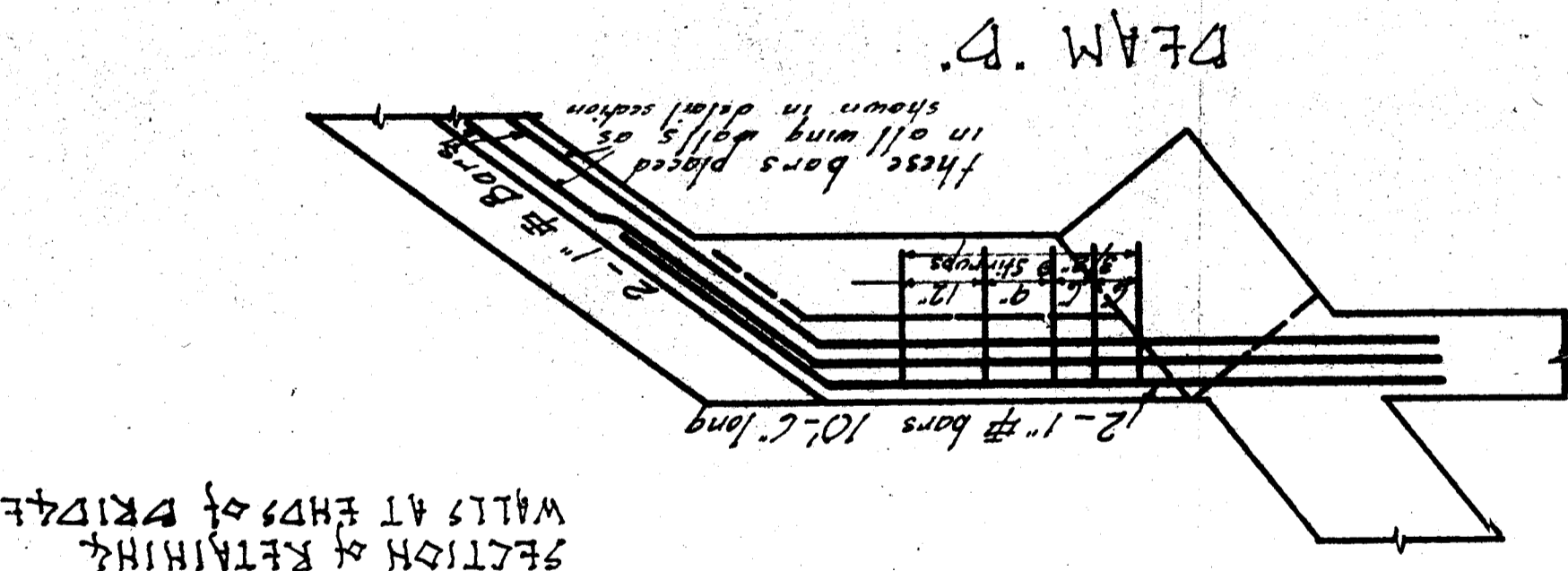


REF INFORMED CONCRETE PRICE
 ON THE
 STATE HIGHWAY
 SOUTHERN PACIFIC TRACKS
 AT
 STATION 109+50 SECTION 4
 IN THE
 COUNTY of SANTA BARBARA
 CALIFORNIA
 WHEN ON THE COUNTY SURVEYOR
 MAYBERRY PARKER + FRED L. JONES
 LOS ANGELES CALIF
 ASSOCIATED ENGINEERS
 JUNE 6, 1917.



NOTE: Rail for north span to be divided
 into three equal panels. End panels
 to be 2-3" from center of pilasters
 and all sills to be 1/2" wide.



ADD FILE PLAN
 MISC
 BOOK NO. N
 PAGE NO. 397