

santa

Barbara



T. 1 S. R. 29 W.

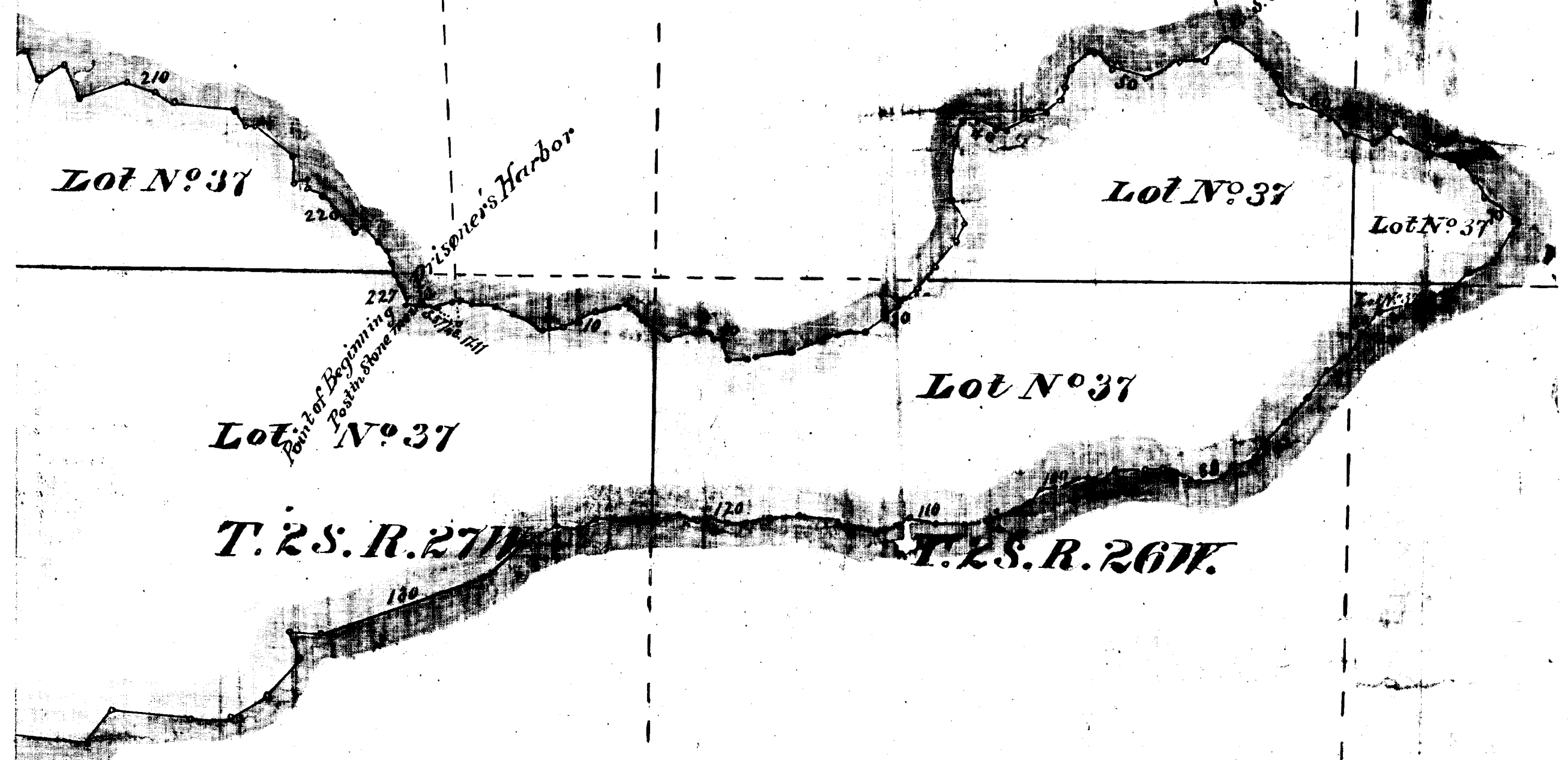
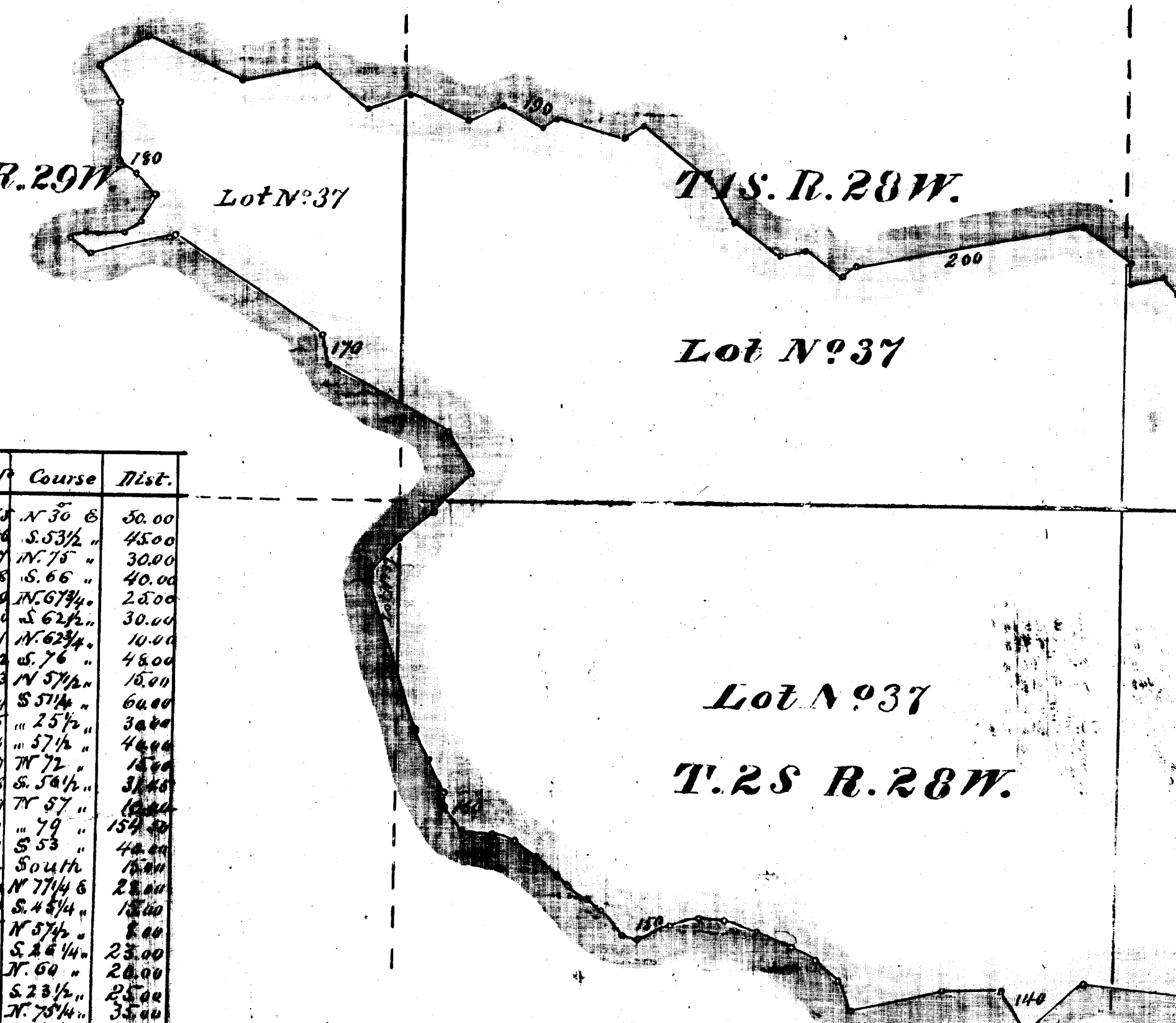
T. 1 S. R. 28 W.

T. 1 S. R. 27 W.

T. 1 S. R. 26 W.

T. 1 S. R. 25 W.

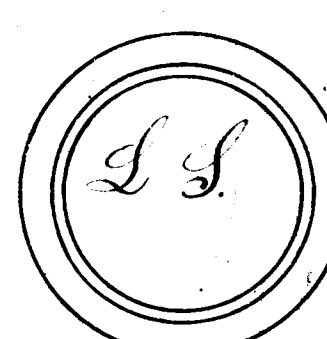
Channel



Boundaries

No.	Course	Dist.	No.	Course	Dist.	No.	Course	Dist.	No.	Course	Dist.	No.	Course	Dist.
1	S. 53 1/2 E	20.64	47	N 75 1/2 E	17.73	93	N 17 1/4 W	20.70	130	S 4 3/4 W	50.00	138	N 30 E	50.00
2	N 72 1/4 E	12.42	48	S 78 1/2 E	3.92	94	S 31 1/2 E	16.07	140	N 32 1/2 E	35.00	142	S 53 1/2 E	45.00
3	S 30 1/2 E	9.50	49	N 43 1/4 E	17.71	95	N 16 1/2 E	2.00	141	S 56 1/2 E	40.00	143	N 75 E	30.00
4	S 78 3/4 E	3.06	50	N 75 1/2 E	23.98	96	S 55 E	5.60	142	N 79 E	62.00	144	S 66 E	40.00
5	S 86 E	15.80	51	N 61 1/4 E	23.20	97	S 88 1/2 E	5.63	143	N 23 1/4 E	18.60	145	N 67 1/4 E	28.00
6	S 66 1/2 E	4.40	52	N 81 1/2 E	18.93	98	S 68 1/2 E	10.31	144	N 49 1/4 E	20.07	146	S 62 1/2 E	30.00
7	S 62 1/2 E	21.87	53	N 41 1/4 E	22.18	99	S 76 E	6.80	145	N 58 E	18.76	147	N 62 1/4 E	10.00
8	N 82 1/4 E	15.05	54	S 93 1/2 E	26.65	100	S 80 E	9.44	146	N 67 1/4 E	25.04	148	S 76 E	45.00
9	N 11 1/4 E	10.75	55	N 49 1/4 E	4.98	101	N 48 1/2 E	14.64	147	N 74 1/4 E	22.37	149	N 57 1/2 E	18.00
10	S 84 E	14.88	56	N 46 1/4 E	6.42	102	S 60 1/4 E	9.19	148	S 82 1/4 E	16.94	150	S 57 1/2 E	60.00
11	S 84 E	15.40	57	N 10 1/4 E	13.35	103	N 73 1/4 E	12.50	149	S 78 1/4 E	19.93	151	S 25 1/2 E	30.00
12	S 84 E	2.21	58	N 49 1/2 E	10.79	104	N 42 1/2 E	2.13	150	S 68 1/4 E	23.03	152	S 7 1/2 E	40.00
13	S 84 E	6.21	59	N 72 1/2 E	5.22	105	S 33 E	4.80	151	N 81 1/4 E	9.70	153	N 72 E	15.00
14	S 84 E	12.41	60	N 61 E	18.98	106	S 52 1/4 E	5.20	152	N 41 1/4 E	22.52	154	S 54 1/2 E	30.00
15	S 84 E	23.10	61	N 64 1/2 E	3.00	107	N 84 1/2 E	1.55	153	N 49 E	11.76	155	N 57 1/2 E	10.00
16	N 77 E	18.55	62	N 74 1/2 E	18.00	108	S 86 1/2 E	14.48	154	S 58 E	16.93	156	N 79 E	15.00
17	S 84 E	2.70	63	N 72 1/2 E	20.50	109	S 88 1/2 E	21.00	155	S 53 1/2 E	9.60	157	S 53 E	40.00
18	S 84 E	7.00	64	N 75 3/4 E	9.14	110	N 63 1/2 E	17.10	156	N 44 1/2 E	19.30	158	S 0 1/4 E	10.00
19	S 84 E	3.00	65	S 69 1/2 E	11.40	111	S 69 1/2 E	10.40	157	N 54 1/2 E	17.00	159	N 77 1/4 E	28.00
20	S 84 E	5.69	66	N 65 1/2 E	21.80	112	S 65 E	14.50	158	N 74 1/4 E	17.90	160	S 4 1/4 E	18.00
21	S 84 E	13.07	67	N 73 1/2 E	23.30	113	N 73 1/2 E	4.70	159	N 88 1/2 E	19.70	161	N 57 1/2 E	8.00
22	N 83 1/4 E	12.81	68	N 44 1/2 E	14.68	114	S 89 1/2 E	12.60	160	S 80 1/2 E	21.50	162	S 8 1/4 E	23.00
23	S 84 E	5.78	69	N 39 1/2 E	12.87	115	N 74 E	6.00	161	S 84 E	6.43	163	N 60 E	20.00
24	N 78 3/4 E	23.00	70	N 52 1/4 E	26.95	116	S 83 E	6.80	162	S 26 1/4 E	25.50	164	S 23 1/2 E	25.00
25	N 78 3/4 E	22.35	71	N 42 E	2.62	117	S 86 1/4 E	20.76	163	N 29 1/4 E	2.00	165	N 75 1/4 E	35.00
26	S 64 1/4 E	5.53	72	N 28 1/4 E	4.24	118	S 77 1/2 E	13.76	164	S 15 1/2 E	11.00	166	S 79 1/4 E	20.00
27	S 84 E	5.72	73	N 20 1/4 E	24.04	119	S 85 1/4 E	12.47	165	S 33 1/2 E	30.00	167	S 8 1/2 E	15.00
28	S 84 E	18.59	74	N 61 1/2 E	17.81	120	N 77 1/2 E	12.50	166	S 53 1/4 E	30.00	168	S 28 1/2 E	15.00
29	S 84 E	19.16	75	N 43 1/2 E	11.65	121	S 85 1/4 E	8.94	167	N 43 E	36.00	169	S 8 1/2 E	15.00
30	S 84 E	11.16	76	N 76 1/4 E	14.87	122	N 70 1/4 E	15.11	168	N 29 1/2 E	32.00	170	N 75 E	5.00
31	S 84 E	19.38	77	N 60 1/2 E	7.57	123	S 84 E	15.10	169	N 61 E	9.40	171	S 55 E	35.00
32	S 84 E	14.83	78	N 80 E	10.00	124	S 89 E	14.46	170	N 57 E	20.00	172	S 0 1/4 E	18.00
33	S 84 E	23.44	79	N 73 1/4 E	21.73	125	S 85 E	26.50	171	N 57 E	12.00	173	N 78 1/2 E	10.00
34	S 84 E	12.40	80	N 58 1/4 E	18.17	126	S 57 1/2 E	14.90	172	S 76 1/4 E	57.50	174	N 17 1/2 E	50.00
35	S 84 E	20.00	81	N 57 1/2 E	14.00	127	N 89 1/2 E	14.76	173	N 53 1/4 E	17.40	175	S 6 1/2 E	12.00
36	N 0 1/2 E	20.00	82	N 27 E	17.07	128	S 64 1/2 E	27.00	174	N 78 1/4 E	14.15	176	N 39 1/4 E	35.00
37	N 10 1/2 E	2.80	83	N 32 1/4 E	26.50	129	N 45 1/2 E	35.00	175	S 75 1/2 E	3.30	177	N 62 E	5.00
38	S 84 E	15.00	84	N 4 E	23.50	130	N 70 E	12.00	176	N 89 1/4 E	17.42	178	S 45 1/4 E	18.50
39	S 84 E	18.00	85	N 39 E	20.00	131	N 55 E	20.00	177	S 53 1/2 E	13.28	179	S 38 1/2 E	8.00
40	S 67 1/2 E	45.50	86	N 25 E	12.28	132	S 20 E	20.00	178	N 26 1/4 E	22.60	180	N 21 1/2 E	9.55
41	S 84 E	4.77	87	N 49 1/4 E	18.20	133	N 41 1/4 E	33.25	179	N 45 1/2 E	16.87	181	N 23 1/2 E	9.00
42	N 67 1/4 E	14.41	88	N 24 1/2 E	8.20	134	N 62 E	29.57	180	N 54 1/2 E	15.00	182	N 25 1/2 E	15.00
43	N 67 1/4 E	11.61	89	N 84 1/4 E	17.83	135	N 83 1/4 E	25.00	181	N 1 E	40.00	183	N 1 1/2 E	31.00
44	S 84 E	13.16	90	N 81 1/2 E	5.04	136	N 38 1/2 E	55.00	182	N 84 1/4 E	30.00			
45	S 84 E	7.93	91	N 71 1/4 E	24.40	137	S 26 E	30.00	183	S 67 E	40.00			
46	S 84 E	15.23	92	S 82 1/2 E	12.50	138	N 83 1/4 E	11.00	184	S 65 E	70.00			

A full true and correct copy of the original Plat on file in this Office.
U.S. Surveyor General's Office,
San Francisco California Nov: 7th 1864.
L. Upson,
U.S. Survey Genl. Cal.



O C E A N

The field notes of the survey of the Island of Santa Cruz, from which this Plat has been made, have been examined and approved and are on file in this office.
U.S. Surveyor General's Office,
San Francisco, California May 20th 1863.
C. D. Bente
U.S. Survey Genl. Cal.

Pacific

