

MAP

of the

JESUS MARIA RANCHO

finally confirmed to
Lewis P. Burton et al.

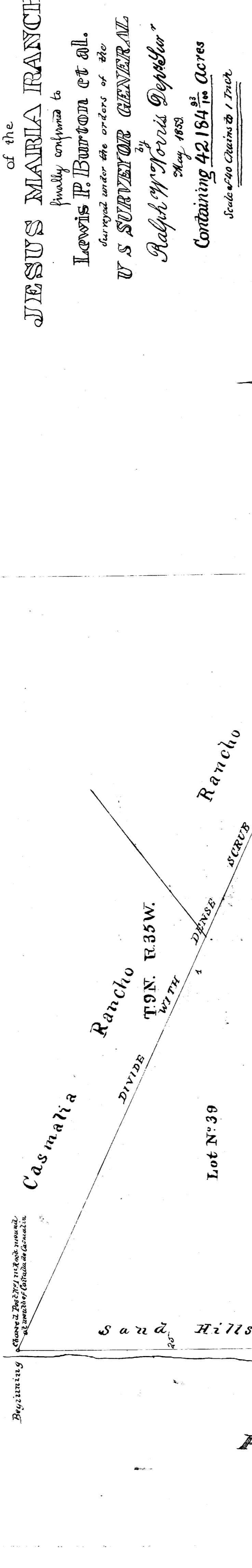
Surveyed under the orders of the
U.S. SURVEYOR GENERAL

by
Robert W. Norris Deputee

May, 1853

Containing 42,184 1/2 Acres

Scale of 20 Chains to 1 Inch



No	Course	Distance	Course	Distance
1	S 64 1/2° E	482	N 7 1/2° W	36
2	N 20 1/2° E	324	S 78° W	38
3	N 24° E	185	N 7 1/2° W	25
4	N 20 1/2° W	257	S 68° W	21
5	N 48° E	92	S 68 1/2° W	11 1/2
6	N 12 1/2° E	38	N 19° W	22 1/2
7	S 55° E	6	N 72° W	25
8	N 71 1/2° E	32	S 75° W	95
9	S 40° E	11	N 22° W	197
10	N 66° E	13	N 43° W	171
11	N 72 1/2° E	37	N 24° W	368
12	S 20 1/2° E	23	S 25° W	182
13	Tract	29	-	-

Approved September 4th 1871.
 Wm. D. Brewster
 Commissioner of the General Land Office

Approved September 17th 1871.
 J. W. Norris
 Deputy Surveyor General

Approved September 18th 1860.
 J. W. Norris
 Deputy Surveyor General

Approved September 18th 1860.
 J. W. Norris
 Deputy Surveyor General

Approved September 18th 1860.
 J. W. Norris
 Deputy Surveyor General

The field notes of the Rancho Jesus Maria finally confirmed to Lewis P. Burton et al. and from which this map has been made out has been examined and approved and are on file in this office.

The U.S. Surveyor General's Office
 San Francisco, California
 January 18th 1860

The field notes of the Rancho Jesus Maria finally confirmed to Lewis P. Burton et al. and from which this map has been made out has been examined and approved and are on file in this office.

The U.S. Surveyor General's Office
 San Francisco, California
 February 16th 1870

