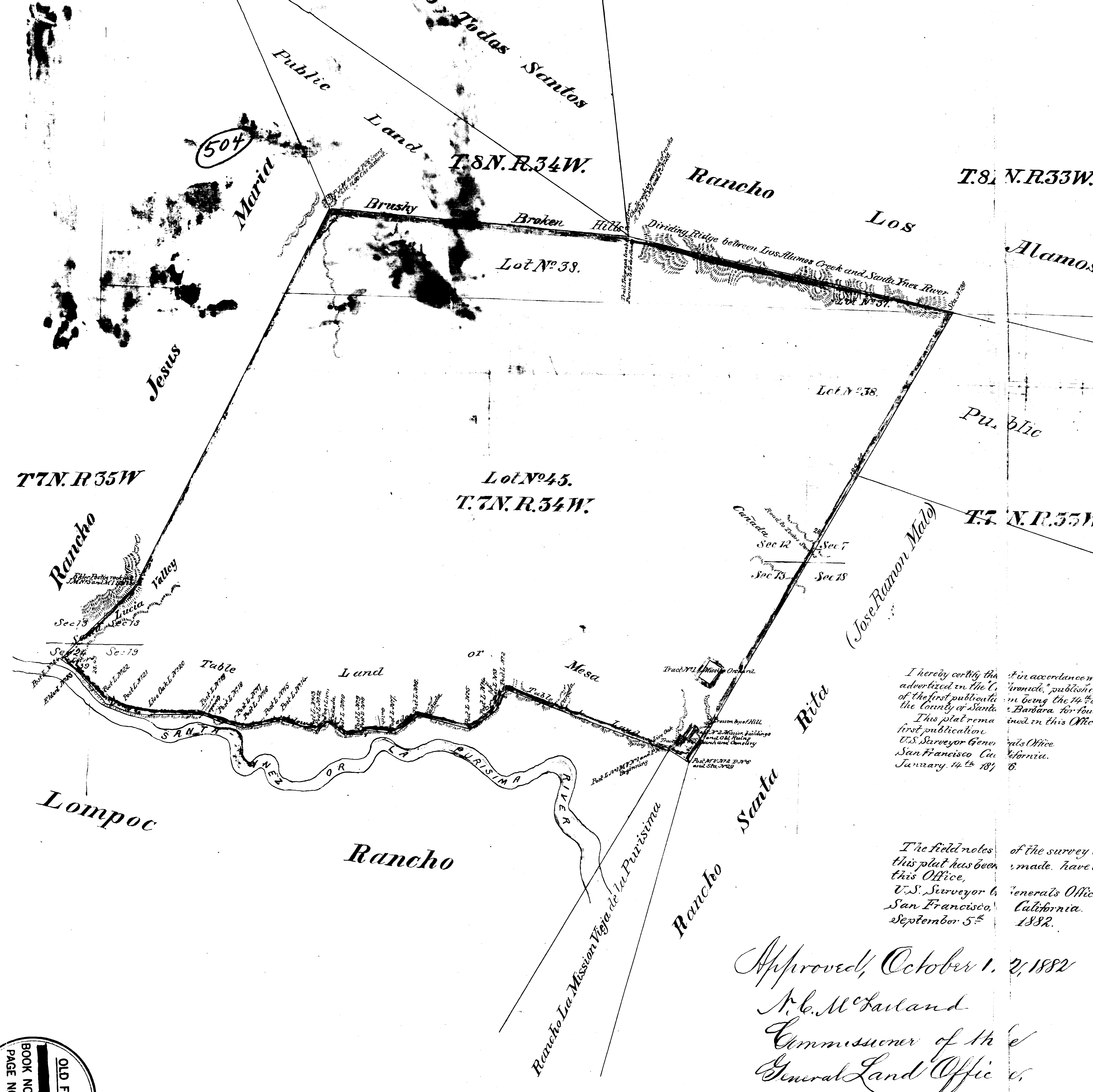


PLAT
of the Rancho
MISSION LAPURISIMA
legally confirmed to
Jose Ramon Malo.
Surveyed under instructions from the
U.S. SURVEYOR GENERAL
by
Wm H. Norway Deputy Surveyor
June 1875
Containing 14,155 1/2 Acres
Scale: 40 chs to 1 inch.
Variation 14 1/2° E.

Boundaries.

| No. | Course | Dist. | No. | Course | Dist. |
|---|-------------|--------|-----|-------------|-------|
| 1 | N 71° 15' W | 120.00 | 16 | S 67° 25' W | 400 |
| 2 | S 48° 54' W | 124.00 | 17 | S 75° 20' W | 1800 |
| 3 | S 40° 54' W | 124.00 | 18 | S 75° 20' W | 1800 |
| 4 | S 77° 14' W | 300.00 | 19 | S 77° 14' W | 1800 |
| 5 | S 77° 14' W | 300.00 | 20 | S 77° 14' W | 1800 |
| 6 | S 77° 14' W | 300.00 | 21 | S 77° 14' W | 1800 |
| 7 | S 77° 14' W | 300.00 | 22 | S 77° 14' W | 1800 |
| 8 | S 77° 14' W | 300.00 | 23 | S 77° 14' W | 1800 |
| 9 | S 77° 14' W | 300.00 | 24 | S 77° 14' W | 1800 |
| 10 | S 77° 14' W | 300.00 | 25 | S 77° 14' W | 1800 |
| 11 | S 77° 14' W | 300.00 | 26 | S 77° 14' W | 1800 |
| 12 | S 77° 14' W | 300.00 | 27 | S 77° 14' W | 1800 |
| 13 | S 77° 14' W | 300.00 | 28 | S 77° 14' W | 1800 |
| 14 | S 77° 14' W | 300.00 | 29 | S 77° 14' W | 1800 |
| 15 | S 77° 14' W | 300.00 | 30 | S 77° 14' W | 1800 |
| <i>16--down the river with the Rancho Mission La Purisima</i> | | | | | |
| 1 | S 37° 14' W | 13.21 | 3 | S 37° 14' W | 13.28 |
| 2 | S 52° 34' W | 9.19 | 4 | S 52° 34' W | 9.19 |
| <i>17--down the river with the Rancho Mission La Purisima</i> | | | | | |
| 1 | S 40° 54' W | 9.25 | 3 | S 40° 54' W | 9.25 |
| 2 | S 43° 34' W | 7.21 | 4 | S 43° 34' W | 7.21 |
| <i>18--down the river with the Rancho Mission La Purisima</i> | | | | | |
| 1 | S 40° 54' W | 4.70 | 3 | S 40° 54' W | 4.73 |
| 2 | S 52° 34' W | 0.98 | 4 | S 52° 34' W | 0.98 |

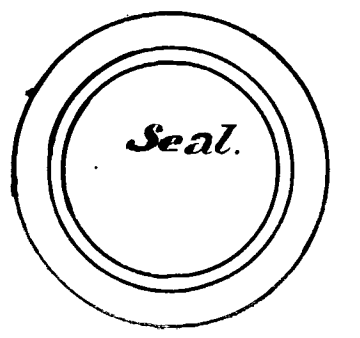


I hereby certify that in accordance with the Act of Congress of July 1st 1864 this survey and plat were advertised in the U.S. Gazette, published in the City and County of San Francisco for four weeks the date of the first publication being the 14th of September 1875 a copy of the Santa Barbara Press published in the County of Santa Barbara for four weeks the date of the first publication being the 14th of September 1875. This plat remains in this Office subject to inspection during ninety days from the date of the first publication.
U.S. Surveyor General's Office
San Francisco California.
January 14th 1876.

Geo. T. Shattuck
U.S. Sur. Gen'l. Cal.

The field notes of the survey of the Rancho Mission La Purisima from which this plat has been made, have been examined and approved and are on file in this Office.
U.S. Surveyor General's Office
San Francisco California.
September 5th 1882.

Approved, October 1, 1882
A. C. McFarland
Commissioner of the
General Land Office.



W. H. Brown
U.S. Sur. Gen'l. Cal.

OLD FILE PLAN
BOOK NO. A
PAGE NO. 504