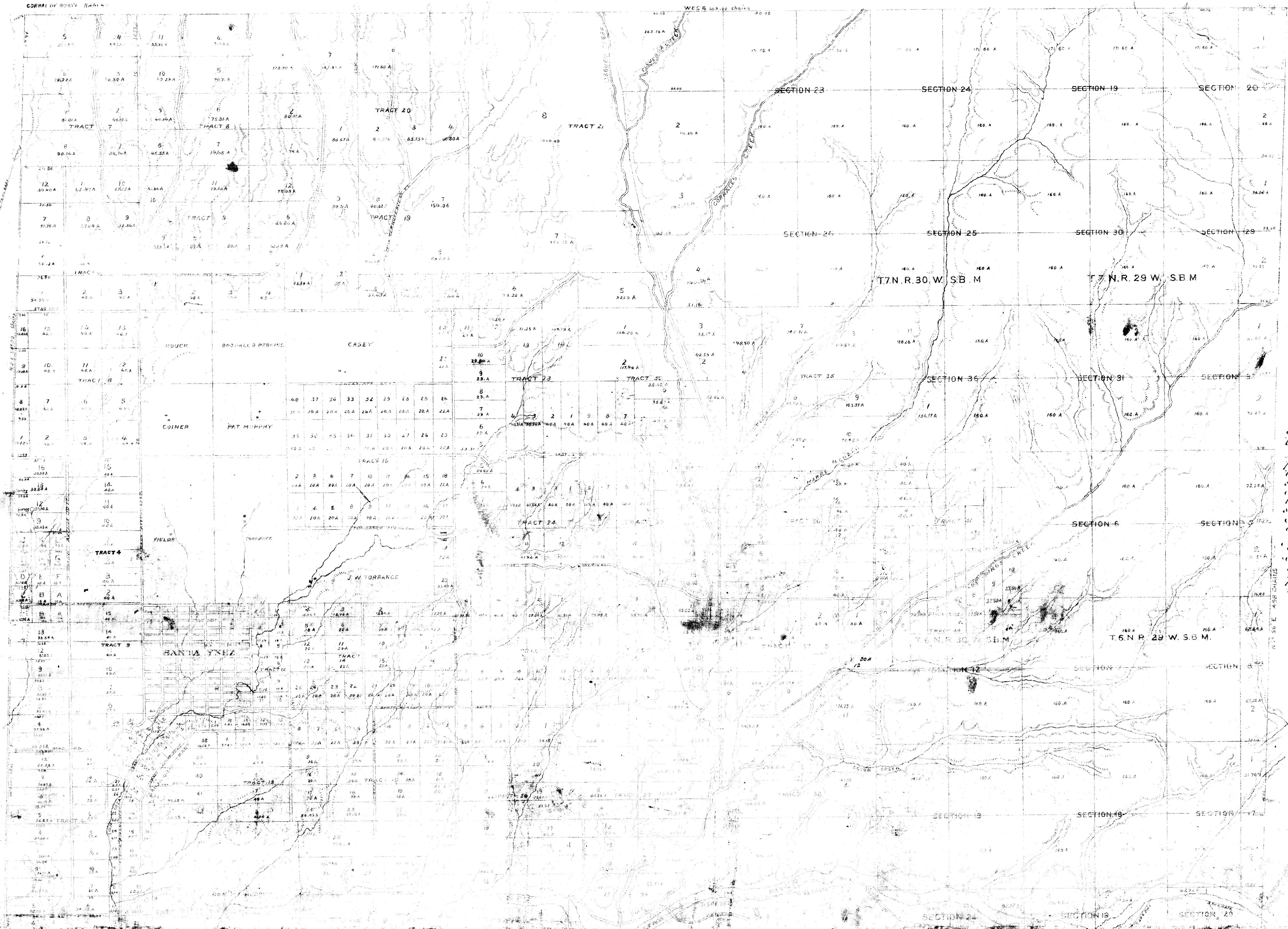


MAP
 SHOWING THE SUBDIVISIONS OF THE
CANADA DE LOS PINOS
 OR
COLLEGE RANCHO SANTA BARBARA CO. CAL.
 AS SURVEYED BY JOHN GILCREST AND H.B. CARPENTER SURVEYORS
 1887-8
 SCALE 25 CHAINS TO AN INCH



The Streets, Roads and Avenues as the same are laid down and delineated on this map are hereby dedicated by the SANTA YNEZ LAND IMPROVEMENT COMPANY, a corporation as public highways for the use of the public, subject to the following conditions and restrictions, to wit: Said Corporation covenants, assigns to itself and its successors and assigns the sole and exclusive right to use said highways for the purpose of constructing and operating roads, streets and other conduits, street railways and other structures thereon, and of laying and using above and beneath the surface thereof pipes, wires and other conductors for conducting water, gas, electricity and other utilities, and to use and across said highways at all times and under such conditions as said Corporation may deem advisable, and this dedication is in no manner to interfere with such reserved rights.

In Witness Whereof, the SANTA YNEZ LAND IMPROVEMENT COMPANY has hereunto caused its CORPORATE name to be signed and its corporate seal to be hereunto affixed this 30th day of July, A. D. 1888, by JEROME SILVERBERG, its President, and by M. D. SWEENEY, its Secretary, thereto duly authorized.

Santa Ynez Land Improvement Company
 by *J. Silverberg* President
 by *M. D. Sweeney* Secretary

Filed August 8th A. D. 1888
A. Stark
 Recorder.