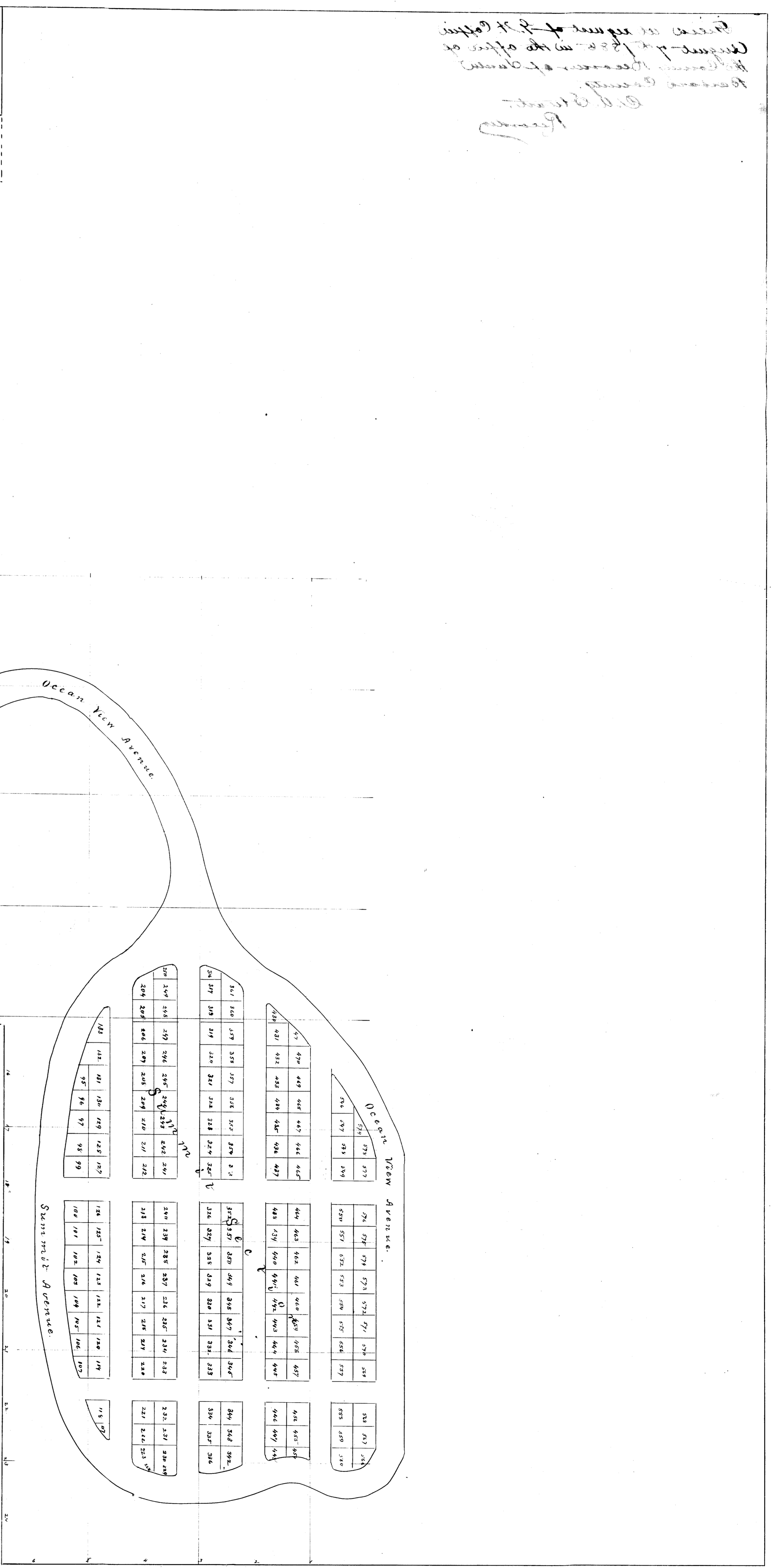


Plans as prepared by J. H. Coffey
 Architect
 100 West 10th Street
 St. Louis, Mo.
 1904



PLAN of SANTA BARBARA CEMETERY.

Adopted Feb. 1904.

Explanations.

Bent lot shown is 25 feet wide, except the
 distance shown, where it is 30 feet wide.
 Laurel Avenue, Cypress Avenue, Cedar
 Avenue, Ocean View Avenue, and Summit
 Avenue are 25 feet wide.
 Mountain View Avenue is 15 feet wide.
 Maple and Elm Avenues are 10 feet wide.
 The other lots are 6 feet wide.
 The regular lots are Mountain View and
 Cedar Avenue are 20 x 20 feet in diameter.
 The large lots are 20 x 20 feet.
 The small lots are 10 x 10 feet.
 The lots are shown with their original
 boundaries and the distance between
 the lots is shown by a dashed line.
 The lots are shown with their original
 boundaries and the distance between
 the lots is shown by a dashed line.

Scale 1" = 20' feet.