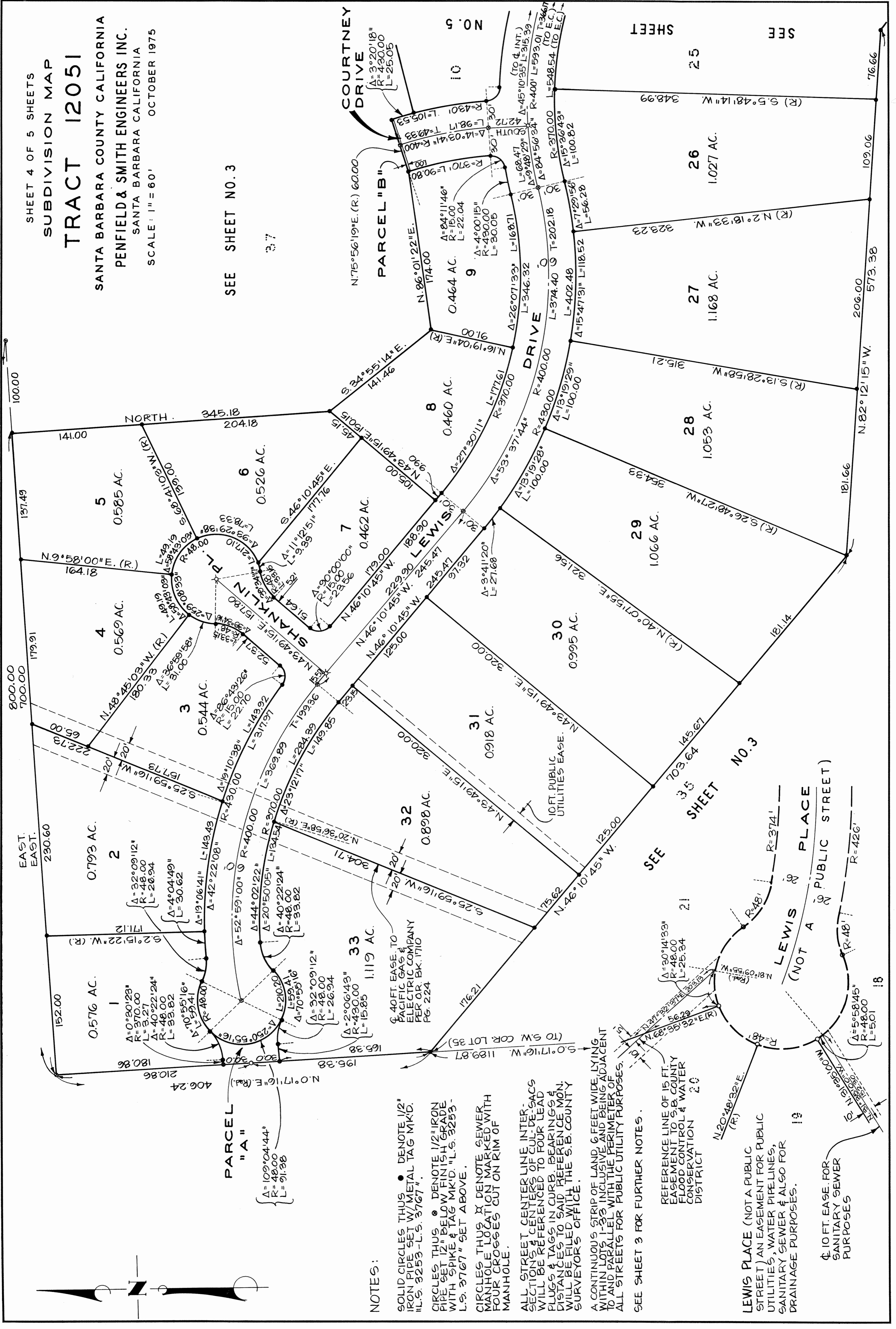


SHEET 4 OF 5 SHEETS
 SUBDIVISION MAP
TRACT 12051

SANTA BARBARA COUNTY CALIFORNIA
PENFIELD & SMITH ENGINEERS INC.
 SANTA BARBARA CALIFORNIA
 OCTOBER 1975
 SCALE: 1" = 60'

SEE SHEET NO. 3

37



NOTES:

- SOLID CIRCLES THUS ● DENOTE 1/2" IRON PIPE SET W/ METAL TAG MK'D. "L.S. 3253 - L.S. 3767"
- CIRCLES THUS ○ DENOTE 1/2" IRON PIPE SET 12" BELOW FINISH GRADE WITH SPIKE & TAG MK'D. "L.S. 3253 - L.S. 3767" SET ABOVE.
- CIRCLES THUS X DENOTE SEWER MANHOLE LOCATION MARKED WITH FOUR CROSSES CUT ON RIM OF MANHOLE.
- ALL STREET CENTERLINE INTERSECTIONS & CENTERS OF CURVES SHALL BE REFERENCED TO FOUR LEAD PLUGS & TAGS IN CURB. BEARINGS & DISTANCES TO SAID REFERENCE MON. WILL BE FILED WITH THE S.B. COUNTY SURVEYOR'S OFFICE.
- A CONTINUOUS STRIP OF LAND 6 FEET WIDE LYING WITHIN LOTS 1-33 INCLUSIVE AND BEING ADJACENT TO AND PARALLEL WITH THE PERIMETER OF ALL STREETS FOR PUBLIC UTILITY PURPOSES.

SEE SHEET 3 FOR FURTHER NOTES.

REFERENCE LINE OF 15 FT. EASEMENT TO S.B. COUNTY FLOOD CONTROL & WATER CONSERVATION DISTRICT

LEWIS PLACE (NOT A PUBLIC STREET) AN EASEMENT FOR PUBLIC UTILITIES, WATER PIPELINES, SANITARY SEWER & ALSO FOR DRAINAGE PURPOSES.

10 FT. EASE. FOR SANITARY SEWER PURPOSES

SHEET 25

SEE