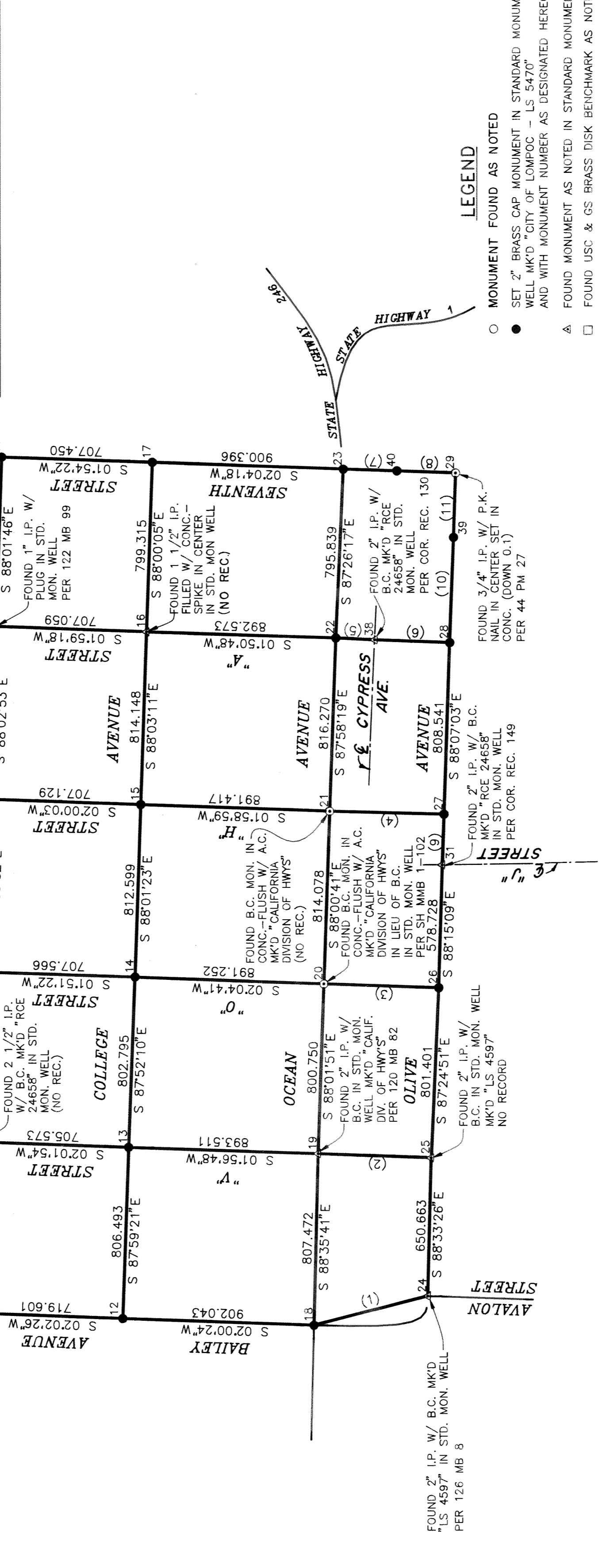


NO.	NORTHING (METERS)	EASTING (METERS)	ELEVATION (FEET)
1	631607.806	E 1772348.319	72.38
2	631576.095	E 1773155.232	76.17
3	631549.193	E 1773962.792	81.14
4	631511.404	E 1774767.689	86.71
5	631487.429	E 1775577.497	92.27
6	630790.545	E 1772319.251	74.27
7	630748.230	E 1773124.639	75.42
8	630720.451	E 1773924.783	83.99
9	630691.921	E 1774738.670	83.13
10	630664.196	E 1775552.190	97.55
11	630636.744	E 1776350.017	104.24
12	630071.400	E 1772293.629	74.88
13	630043.101	E 1773099.625	81.34
14	630013.256	E 1773901.865	87.16
15	629985.223	E 1774713.980	104.65
16	629957.562	E 1775527.658	141.61
17	629929.686	E 1776326.487	111.93
18	629169.910	E 1776262.042	80.83
19	629150.106	E 1773869.271	84.87
20	629122.591	E 1773869.548	89.85
21	629094.340	E 1774683.136	101.88
22	629065.453	E 1775498.894	106.77
23	629029.878	E 1776293.938	116.64
24	628634.944	E 1772400.419	104.73
25	628618.561	E 1773050.876	90.63
26	628582.403	E 1773851.461	96.57
27	628556.350	E 1774689.059	106.70
28	628529.788	E 1775497.184	112.52
29	628500.971	E 1776276.570	181.79
30	628481.754	E 17770429.920	174.25
31	628461.691	E 1775490.359	105.50
32	628441.131	E 1775971.706	169.37
33	628421.131	E 1776285.978	169.94
34	628401.131	E 1776285.978	169.94
35	628381.131	E 1776285.978	169.94
36	628361.131	E 1776285.978	169.94
37	628341.131	E 1776285.978	169.94
38	628321.131	E 1776285.978	169.94
39	628301.131	E 1776285.978	169.94
40	628281.131	E 1776285.978	169.94



RECORDERS STATEMENT  
 FILED THIS  
 25th DAY OF FEBRUARY, 1991  
 AT 2:30 PM. IN BOOK 142 OF  
 RECORD OF SURVEYS AT PAGE 824 & 83  
 AT THE REQUEST OF  
 PENFIELD & SMITH - ENGINEERS \* SURVEYORS  
 KENNETH A. PETTIT  
 COUNTY CLERK-RECORDER  
 COUNTY OF SANTA BARBARA  
 BY: *James Mason* DEPUTY COUNTY RECORDER

RECORDER'S STATEMENT  
 FEE \$18.00  
 THIS MAP HAS BEEN EXAMINED IN ACCORDANCE WITH SECTION 8766 OF THE LAND SURVEYOR'S ACT.  
 THIS 21st DAY OF FEBRUARY, 1991.  
 EDWARD J. MARINI  
 COUNTY SURVEYOR  
 BY: *E. J. Marini*  
 REGISTRATION EXPIRATION DATE: 6/30/93  
 R.C.E. NO.: 18699

SURVEYOR'S STATEMENT  
 THIS MAP CORRECTLY REPRESENTS A SURVEY MADE BY ME OR UNDER MY DIRECTION IN CONFORMANCE WITH THE REQUIREMENTS OF THE LAND SURVEYOR'S ACT AT THE REQUEST OF  
 THE CITY OF LOMPOC  
 IN JANUARY, 1990  
 M. J. [Signature]  
 L.S. NO.: 5470 LICENSE EXPIRATION DATE: 9-30-92

RECORD OF SURVEY FOR  
 GEOGRAPHIC INFORMATION SYSTEM  
 PROJECT LYING WITHIN  
 THE CITY OF LOMPOC

COUNTY OF SANTA BARBARA  
 STATE OF CALIFORNIA  
 SCALE 1" = 400 METERS JUNE, 1990

**Penfield & Smith**  
 ENGINEERS \* SURVEYORS

111 E. VICTORIA ST. SANTA BARBARA  
 (805) 963-9532 CALIF. 93101  
 MAILING ADDRESS: P.O. BOX 98 (93102)

SHEET 1 OF 2 SHEETS W.O. 9081.02

TANGENT TABLE

NO.	BEARING	DISTANCE
1	S 14°30'09"E	552.573
2	S 01°55'55"W	531.863
3	S 01°55'04"W	540.490
4	S 01°29'56"W	538.175
5	S 02°39'44"W	183.761
6	S 02°08'46"W	352.349
7	S 01°48'28"W	252.503
8	S 01°56'58"W	276.690
9	S 87°59'14"E	239.287
10	S 87°50'22"E	494.894
11	S 88°05'29"E	305.033

NOTES

- THE POINTS SHOWN ON THIS SURVEY, FOUND AND SET, ARE A HORIZONTAL AND VERTICAL NETWORK ESTABLISHED IN THE CITY OF LOMPOC AS A CONTROL BASIS FOR A CITYWIDE GEOGRAPHIC INFORMATION SYSTEM.
- HORIZONTAL COORDINATES BEARINGS AND DISTANCES SHOWN HEREON ARE GRID, CALIFORNIA ZONE 5, NAD 83 DATUM
- HORIZONTAL COORDINATES AND DISTANCES SHOWN HEREON ARE IN METERS. TO OBTAIN COORDINATES AND DISTANCES IN U.S. SURVEY FEET MULTIPLY BY 39.37/12
- TO OBTAIN GROUND LEVEL DISTANCES MULTIPLY GRID DISTANCES BY 1.000076236 (SCALE FACTOR AT POINT 14)
- TO OBTAIN TRUE NORTH BEARINGS SUBTRACT 1°24'21.66" FROM GRID BEARINGS (MAPPING ANGLE AT POINT 14)
- BEARINGS SHOWN HEREON ARE ROUNDED OFF TO THE NEAREST SECOND OF ARC. TO OBTAIN TRUE BEARINGS, INVERSE BETWEEN THE APPROPRIATE COORDINATES GIVEN HEREON.
- HORIZONTAL POSITIONS ON THE FOLLOWING POINTS WERE OBTAINED BY DIFFERENTIAL G.P.S. (GLOBAL POSITIONING SYSTEM) SURVEY METHODS USING "PINE", "GRASSY" AND "PINES" AS PRIMARY CONTROL: 1, 3, 5, 11, 12, 14, 16, 23, 24, 26, 28. THE HORIZONTAL POSITIONS ON THE PRIMARY CONTROL WERE OBTAINED FROM THE NATIONAL OCEANIC AND ATMOSPHERIC ADMINISTRATION NATIONAL GEODETIC SURVEY INFORMATION CENTER IN ROCKVILLE, MARYLAND.(BASIS OF BEARINGS)
- ELEVATIONS SHOWN HEREON ARE IN FEET AND ARE REFERENCED TO THE N.G.V.D. 1929 SEA LEVEL DATUM.
- VERTICAL POSITIONS WERE OBTAINED BY DIFFERENTIAL LEVELING SURVEY METHODS USING U.S.C. & G.S. BENCHMARKS 0536, Y536, AND Z536 AS PRIMARY CONTROL.
- STREETS SHOWN HEREON ARE FOR INFORMATIONAL PURPOSES ONLY. MONUMENTS FOUND AND SET ARE NOT NECESSARILY ON STREET CENTERLINES.

LEGEND

- MONUMENT FOUND AS NOTED
  - SET 2" BRASS CAP MONUMENT IN STANDARD MONUMENT WELL MK'D "CITY OF LOMPOC - LS 5470" AND WITH MONUMENT NUMBER AS DESIGNATED HEREON.
  - △ FOUND MONUMENT AS NOTED IN STANDARD MONUMENT WELL
  - FOUND USC & GS BRASS DISK BENCHMARK AS NOTED
  - ⊙ FOUND MONUMENT AS NOTED - RESET WITH 2" BRASS CAP MONUMENT IN STANDARD MONUMENT WELL MK'D "CITY OF LOMPOC - LS 5470" AND WITH MONUMENT NUMBER AS DESIGNATED HEREON
- (10) DENOTES DIMENSION IN TANGENT TABLE  
 29 MONUMENT NUMBER DESIGNATION  
 COR. REC. CORNER RECORD FILED IN THE OFFICE OF THE COUNTY SURVEYOR

