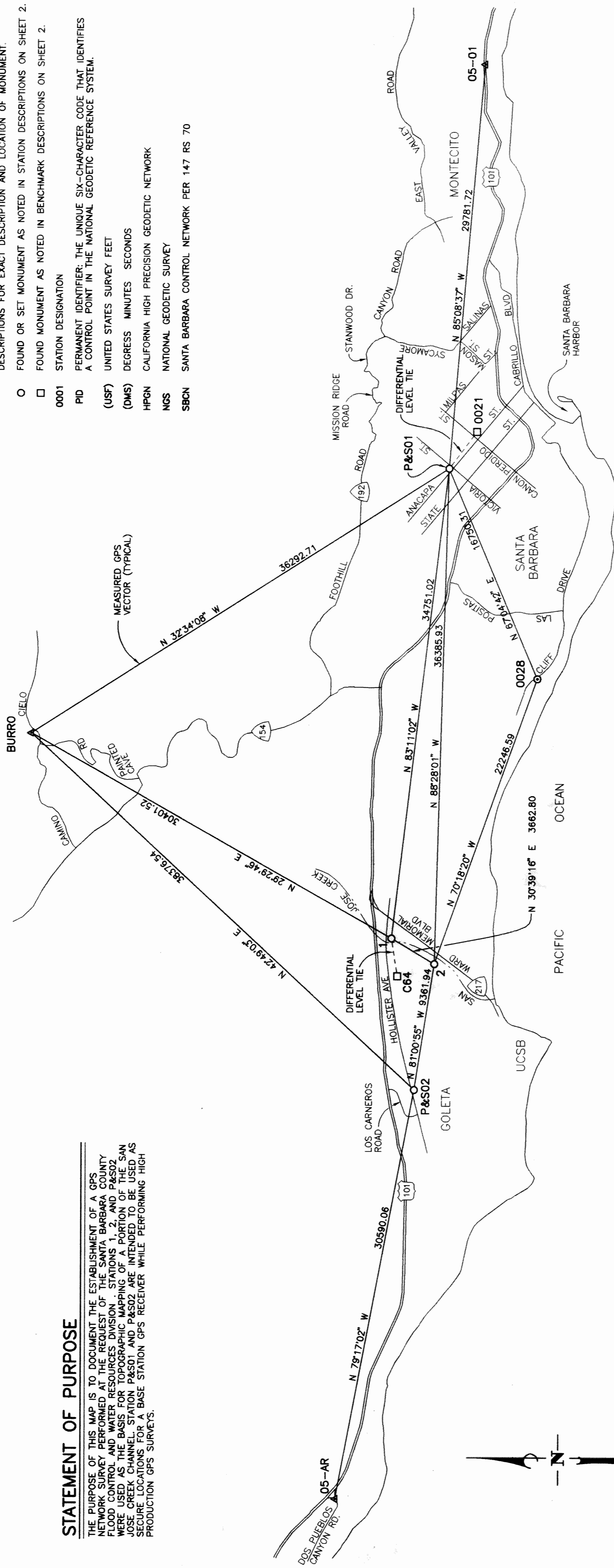


STATEMENT OF PURPOSE

THE PURPOSE OF THIS MAP IS TO DOCUMENT THE ESTABLISHMENT OF A GPS NETWORK SURVEY PERFORMED AT THE REQUEST OF THE SANTA BARBARA COUNTY FLOOD CONTROL AND WATER RESOURCES DIVISION. STATIONS 1, 2, AND P&S02 WERE USED AS THE BASIS FOR TOPOGRAPHIC MAPPING OF A PORTION OF THE SAN JOSE CREEK CHANNEL. STATION P&S01 AND P&S02 ARE INTENDED TO BE USED AS SECURE LOCATIONS FOR A BASE STATION GPS RECEIVER WHILE PERFORMING HIGH PRODUCTION GPS SURVEYS.

LEGEND

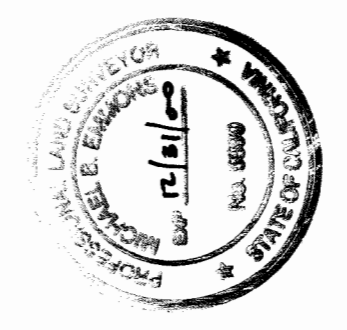
- ▲ FOUND CALIFORNIA HIGH PRECISION GEODETIC NETWORK STATION. SEE STATION DESCRIPTIONS FOR EXACT DESCRIPTION AND LOCATION OF MONUMENT.
- ⊙ FOUND SANTA BARBARA CONTROL NETWORK STATION PER 147 RS 70. SEE STATION DESCRIPTIONS FOR EXACT DESCRIPTION AND LOCATION OF MONUMENT.
- FOUND OR SET MONUMENT AS NOTED IN STATION DESCRIPTIONS ON SHEET 2.
- FOUND MONUMENT AS NOTED IN BENCHMARK DESCRIPTIONS ON SHEET 2.
- 0001 STATION DESIGNATION
- PID PERMANENT IDENTIFIER: THE UNIQUE SIX-CHARACTER CODE THAT IDENTIFIES A CONTROL POINT IN THE NATIONAL GEODETIC REFERENCE SYSTEM.
- (USF) UNITED STATES SURVEY FEET
- (DMS) DEGREE MINUTES SECONDS
- HPGN CALIFORNIA HIGH PRECISION GEODETIC NETWORK
- NGS NATIONAL GEODETIC SURVEY
- SBCN SANTA BARBARA CONTROL NETWORK PER 147 RS 70



RECORDER'S STATEMENT
 FEE 0
 FILED THIS 1st DAY OF June, 1999.
 AT 3:21 P.M. IN BOOK 170 OF 1-2
 RECORD OF SURVEYS AT PAGE 1-2
 AT THE REQUEST OF
 PENFIELD & SMITH - ENGINEERS * SURVEYORS
 KENNETH A. PETTIT
 COUNTY CLERK-RECORDER-ASSESSOR
 SANTA BARBARA COUNTY
 BY: Anna Botke DEPUTY COUNTY RECORDER

COUNTY SURVEYOR'S STATEMENT
 THIS MAP HAS BEEN EXAMINED IN ACCORDANCE WITH SECTION 8766 OF THE LAND SURVEYOR'S ACT
 THIS 18th DAY OF MAY, 1999.
 BY: Michael B. Emmons COUNTY SURVEYOR
 MICHAEL B. EMMONS
 P.L.S. NO.: 5899 LICENSE EXPIRATION DATE: 12-31-2000

SURVEYOR'S STATEMENT
 THIS MAP CORRECTLY REPRESENTS A SURVEY MADE BY ME OR UNDER MY DIRECTION IN CONFORMANCE WITH THE REQUIREMENTS OF THE LAND SURVEYOR'S ACT AT THE REQUEST OF SANTA BARBARA COUNTY FLOOD CONTROL AND WATER RESOURCES DIVISION.
 IN JANUARY, 1999
 JUSTIN P. HEIGHT
 P.L.S. NO.: 6167 LICENSE EXPIRATION DATE: 3-31-2002



RECORD OF SURVEY
 OF A CONTROL NETWORK ESTABLISHED FOR THE SAN JOSE CREEK FLOODWAY STUDY FOR THE SANTA BARBARA COUNTY PUBLIC WORKS DEPARTMENT FLOOD CONTROL AND WATER RESOURCES DIVISION
 SANTA BARBARA COUNTY STATE OF CALIFORNIA
 SCALE: 1" = 5000'
Penfield & Smith
 ENGINEERS - SURVEYORS
 101 E. VICTORIA ST. SANTA BARBARA CALIF 93101
 MAILING ADDRESS: P.O. BOX 98 (93102)
 SHEET 1 OF 2 SHEETS W.O. 13006.01