

NOTE: BOUNDARY COMPILED FROM
BOOK 2485, PAGE 958, O.R. &
SANTA BARBARA CITY LOT
SPLIT BK. A, PG. 50.

SURVEYOR'S CERTIFICATE:

I, George N. Dumas, HEREBY CERTIFY THAT THIS MAP
FOR SEPARATE ASSESSMENT, CONSISTING OF 4 SHEETS
CORRECTLY SHOWS THE BOUNDARIES OF THE LAND AND THE
RELATION THERETO OF THE UNITS SHOWN HEREON AND THAT
THE UNITS DESCRIBED HEREIN OCCUPY THE POSITIONS AS SHOWN
HEREON WITH MINOR VARIATIONS.

George N. Dumas
L.S. 5767

COUNTY ASSESSOR'S CERTIFICATE:

THIS MAP CONFORMS WITH THE REQUIREMENTS OF THE
REVENUE AND TAXATION CODE.

DATE: February 25, 1981

William H. Cook
COUNTY ASSESSOR

COUNTY RECORDER'S CERTIFICATE:

I HEREBY CERTIFY THAT THIS MAP FOR SEPARATE
ASSESSMENT OF VILLA MIRADERO SOUTH, CONSISTING
OF 4 SHEETS, WAS ACCEPTED AND RECORDED

Feb. 25 th, 1981 IN BOOK 1 AT PAGES 3
Maps for Separate
TO 6 OF Assessments, RECORDS OF SANTA
BARBARA COUNTY, CALIFORNIA AT 8:00 A.M.

FILE NO. none

FEE \$11.00

HOWARD C. MENZEL
COUNTY CLERK-RECORDER
SANTA BARBARA COUNTY,
CALIFORNIA
BY: Mary Rose Macdonald
DEPUTY

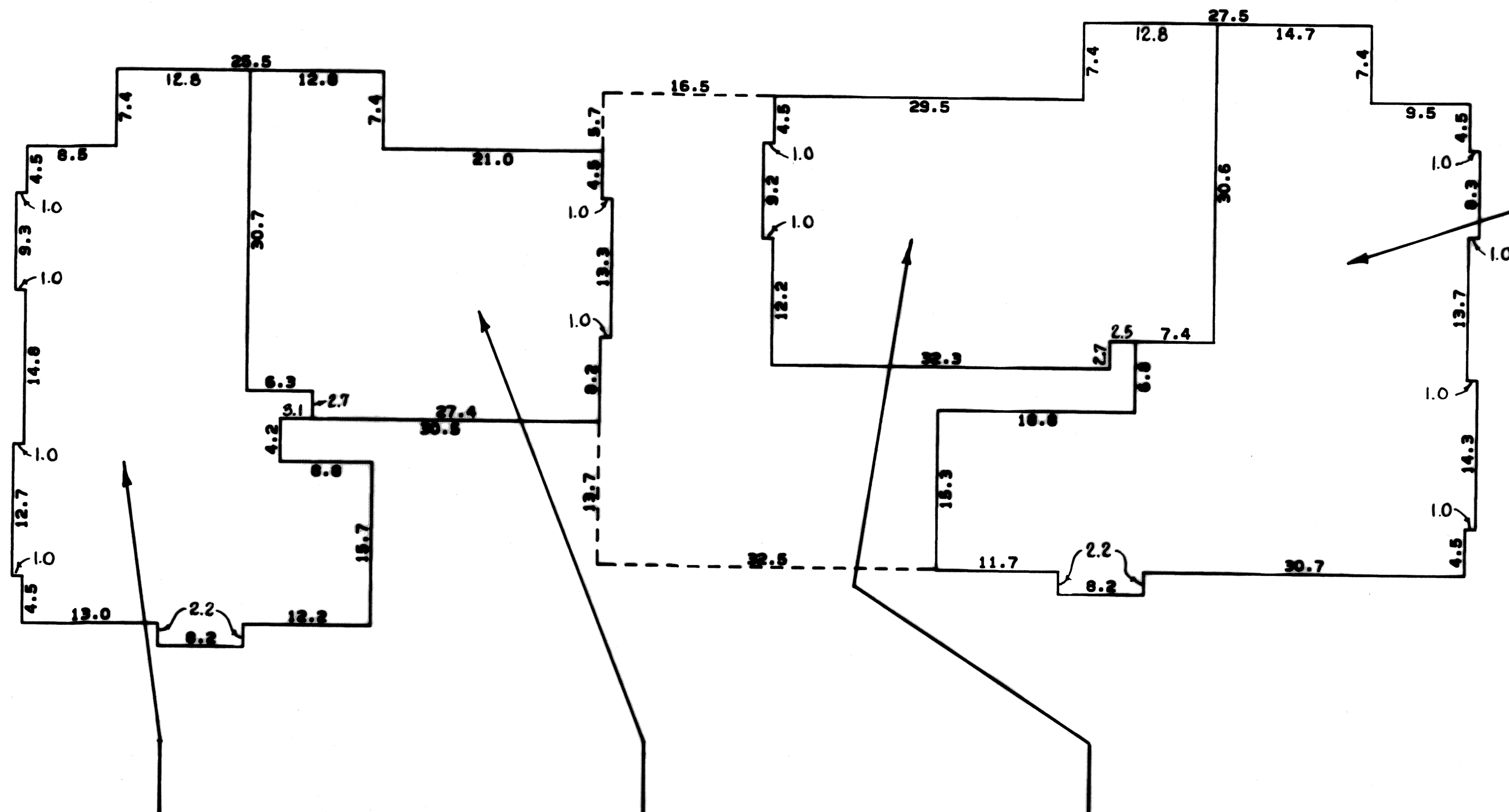
SHEET 1 OF 4 SHEETS

PLOT PLAN
MAP FOR
SEPARATE ASSESSMENTS
OF
VILLA MIRADERO SOUTH

BEING A PORTION OF LOT 66
OF THE OUTSIDE PUEBLO LANDS
OF THE CITY OF SANTA BARBARA, CALIFORNIA

SANTA BARBARA, CALIFORNIA

PENFIELD & SMITH ENGINEERS, INC.
SCALE: 1" = 30' FEBRUARY 1981
W05984



BUILDING NO.	FLOOR	UNIT
--------------	-------	------

2821	1ST	F
2821	2ND	H

2805	1ST	F
2805	2ND	H

2767	1ST	F
2767	2ND	H

BUILDING NO.	FLOOR	UNIT
--------------	-------	------

2821	1ST	E
2821	2ND	G

2805	1ST	E
2805	2ND	G

2767	1ST	E
2767	2ND	G

BUILDING NO.	FLOOR	UNIT
--------------	-------	------

2821	1ST	B
2821	2ND	D

2805	1ST	B
2805	2ND	D

2767	1ST	B
2767	2ND	D

BUILDING NO.	FLOOR	UNIT
--------------	-------	------

2821	1ST	A
2821	2ND	C

2805	1ST	A
2805	2ND	C

2767	1ST	A
2767	2ND	C

NOTE: SEE SHEET 1 FOR
BUILDING LOCATION

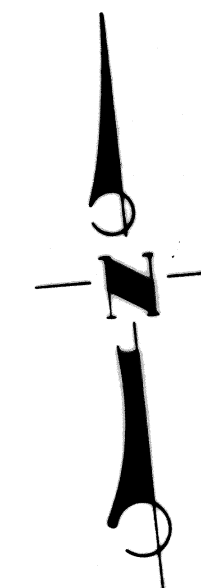
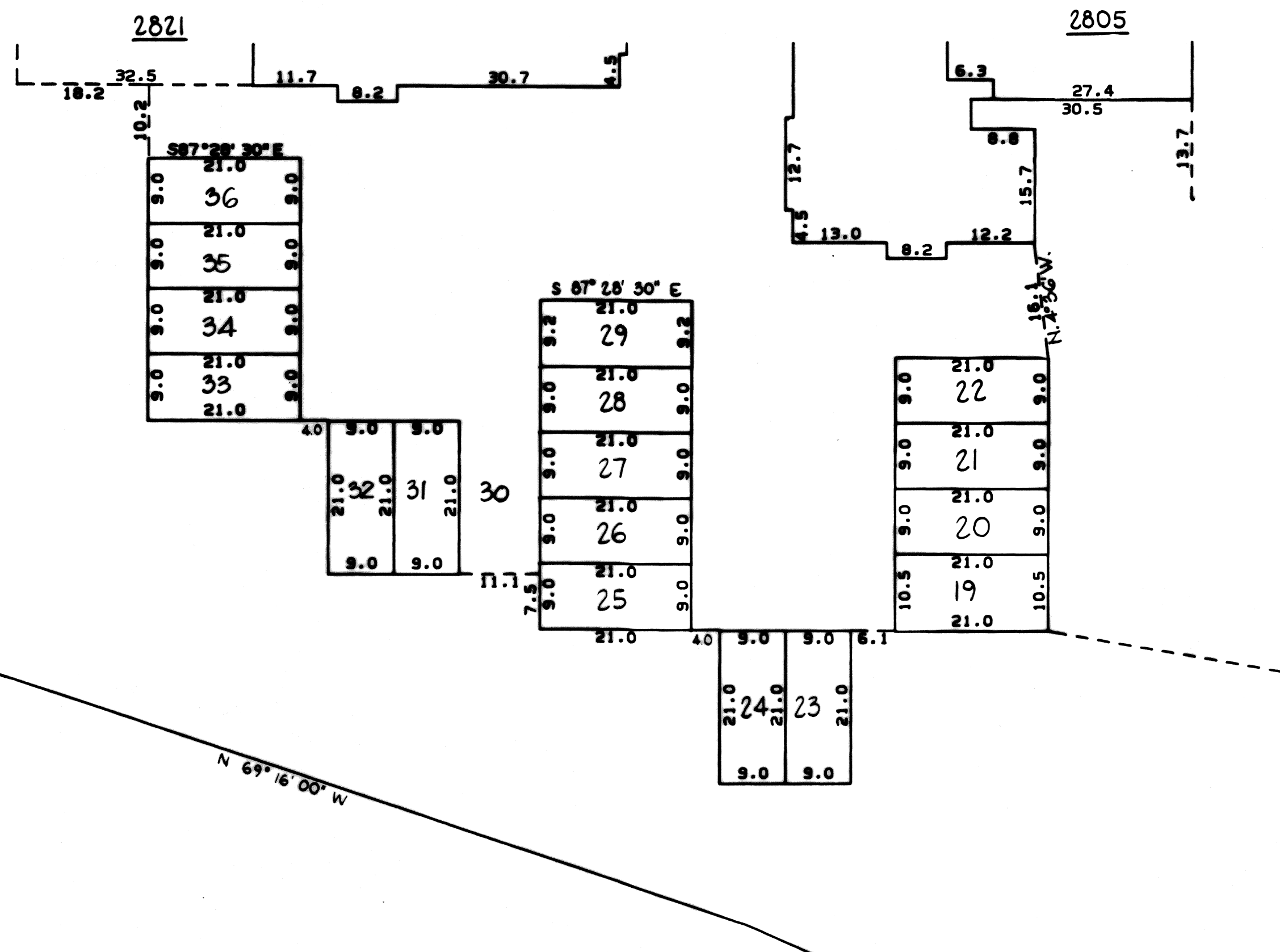
SHEET 2 OF 4 SHEETS

TYPICAL FLOOR PLANS
MAP FOR
SEPARATE ASSESSMENTS
OF
VILLA MIRADERO SOUTH

BEING A PORTION OF LOT 66
OF THE OUTSIDE PUEBLO LANDS
OF THE CITY OF SANTA BARBARA, CALIFORNIA

SANTA BARBARA, CALIFORNIA

PENFIELD & SMITH ENGINEERS, INC.
SCALE: 1" = 10' FEBRUARY 1981
W05984



NOTE: SEE SHEET 1 FOR
BUILDING LOCATION

SHEET 3 OF 4 SHEETS

WESTERLY PARKING
MAP FOR
SEPARATE ASSESSMENTS
OF
VILLA MIRADERO SOUTH

BEING A PORTION OF LOT 66
OF THE OUTSIDE PUEBLO LANDS
OF THE CITY OF SANTA BARBARA, CALIFORNIA

SANTA BARBARA, CALIFORNIA

PENFIELD & SMITH ENGINEERS, INC.
SCALE: 1" = 15' FEBRUARY 1981
W05984

