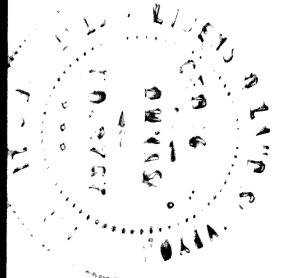


NOTE: BOUNDARY COMPILED FROM
 BOOK 1497, PAGE 81 O.R.
 DATED JANUARY 10, 1958.

SURVEYOR'S CERTIFICATE:

I, GEORGE N. DUMAS, HEREBY CERTIFY THAT THIS MAP FOR SEPARATE ASSESSMENT CONSISTING OF 3 SHEETS CORRECTLY SHOWS THE BOUNDARIES OF THE LAND AND THE RELATION THERETO OF THE UNITS SHOWN HEREON AND THAT THE UNITS DESCRIBED HEREIN OCCUPY THE POSITIONS AS SHOWN HEREON WITH MINOR VARIATIONS.

George N. Dumas
 L.S. 3767



COUNTY ASSESSOR'S CERTIFICATE:

THIS MAP CONFORMS WITH THE REQUIREMENTS OF THE REVENUE AND TAXATION CODE.

DATE: Dec. 17, 1981

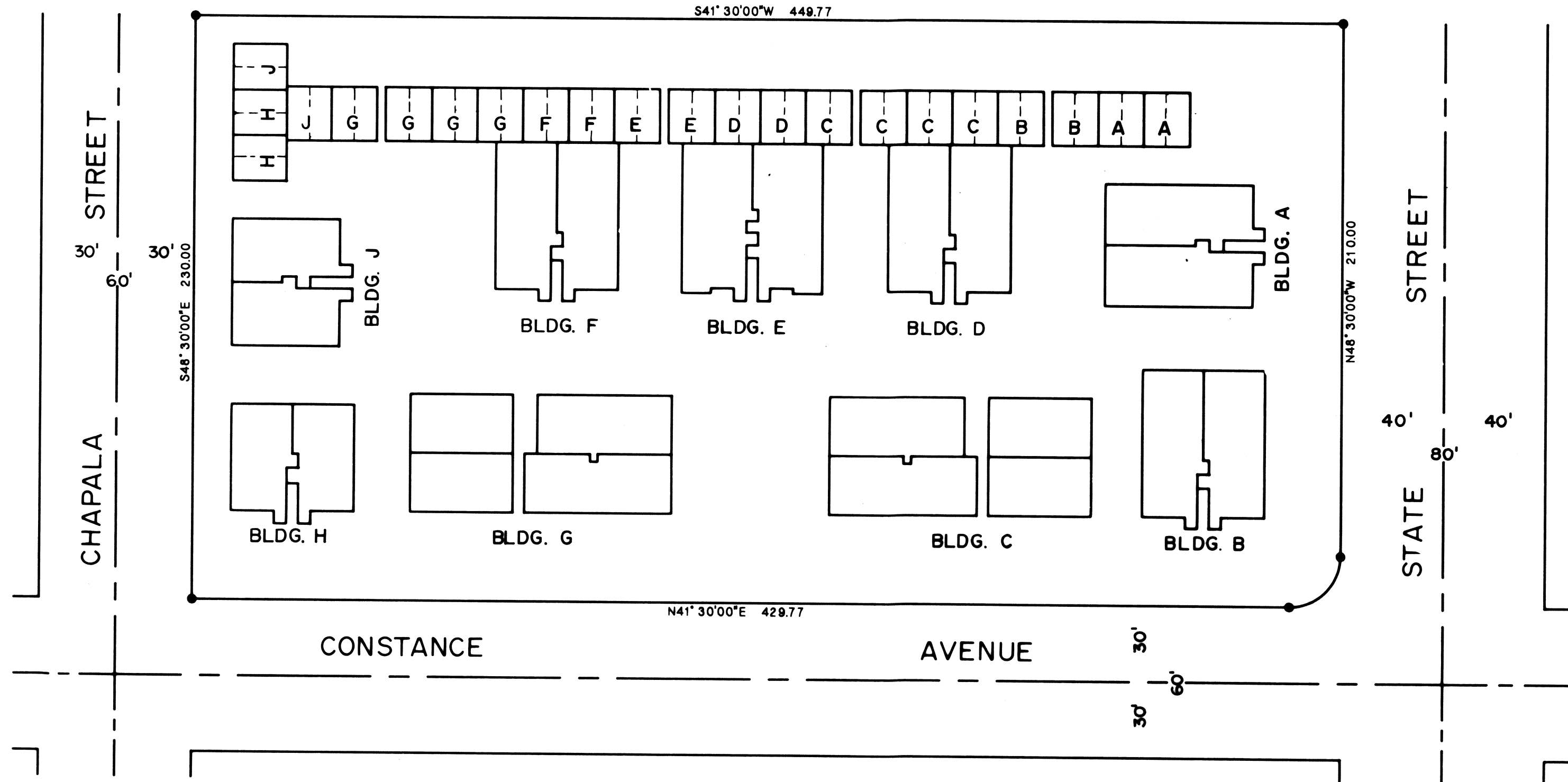
William H. Cook
 COUNTY ASSESSOR

COUNTY RECORDER'S CERTIFICATE:

I HEREBY CERTIFY THAT THIS MAP FOR SEPARATE ASSESSMENT OF VILLA CONSTANCE SOUTH, CONSISTING OF 3 SHEETS WAS ACCEPTED AND RECORDED December 18th, 1981 IN BOOK 1 AT PAGES 7 TO 9, of Maps of Separate Assessments, RECORDS OF SANTA BARBARA COUNTY, CALIFORNIA, AT 4:00 P.M.

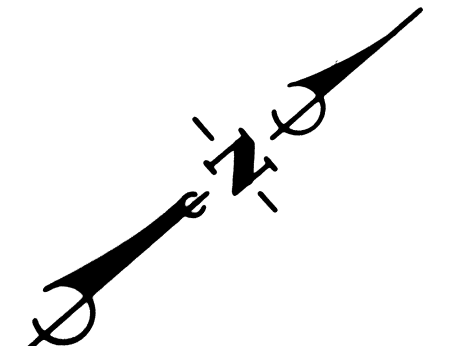
FEE \$10.00

HOWARD C. MENZEL
 COUNTY CLERK-RECORDER
 SANTA BARBARA COUNTY,
 CALIFORNIA
 BY: *Mary Rose Macdonald*
 DEPUTY

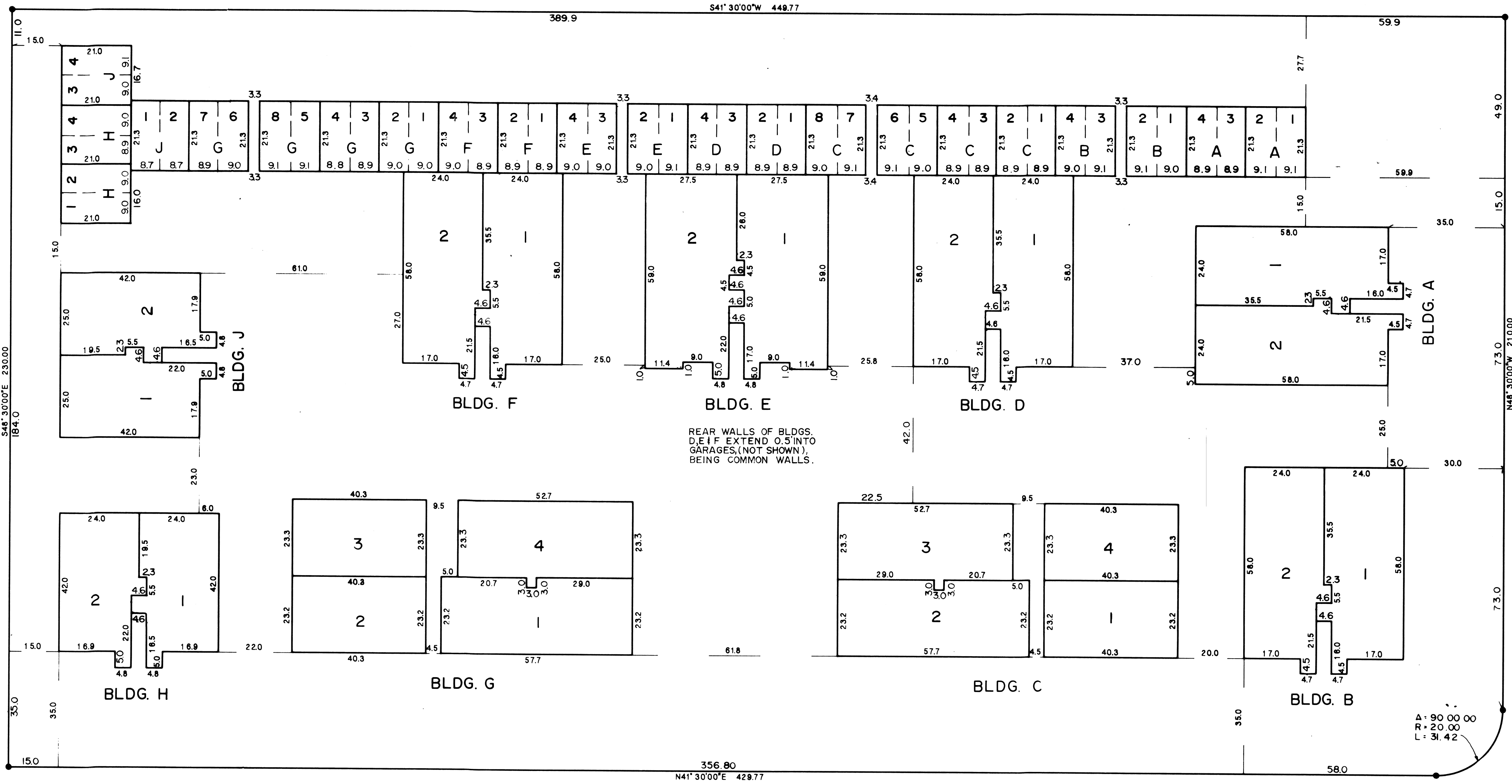


PLOT PLAN

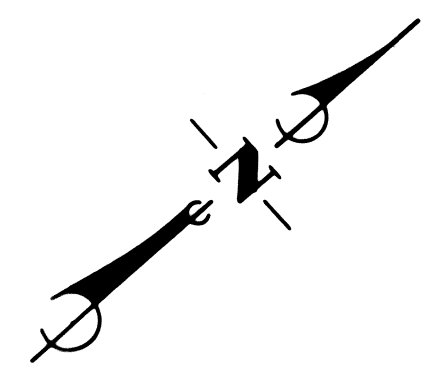
SEE SHEET 2 FOR 1ST FLOOR
 SEE SHEET 3 FOR 2ND FLOOR



SHEET 1 OF 3 SHEETS
 SEPARATE ASSESSMENTS
 OF
 VILLA CONSTANCE SOUTH
 BEING A PORTION OF LOT 65
 OF THE OUTSIDE PUEBLO LANDS
 OF THE CITY OF SANTA BARBARA, CALIFORNIA
 SANTA BARBARA, CALIFORNIA
 PENFIELD & SMITH ENGINEERS, INC.
 SCALE: 1" = 40' OCTOBER 1981
 W.O. 6236



A: 90 00 00
 R: 20.00
 L: 31.42



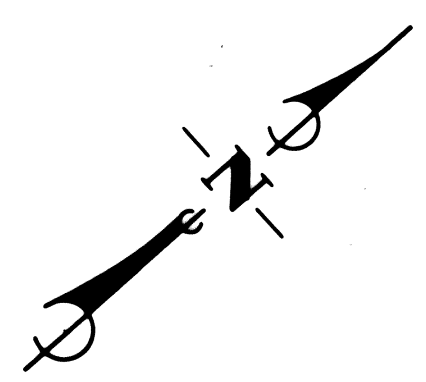
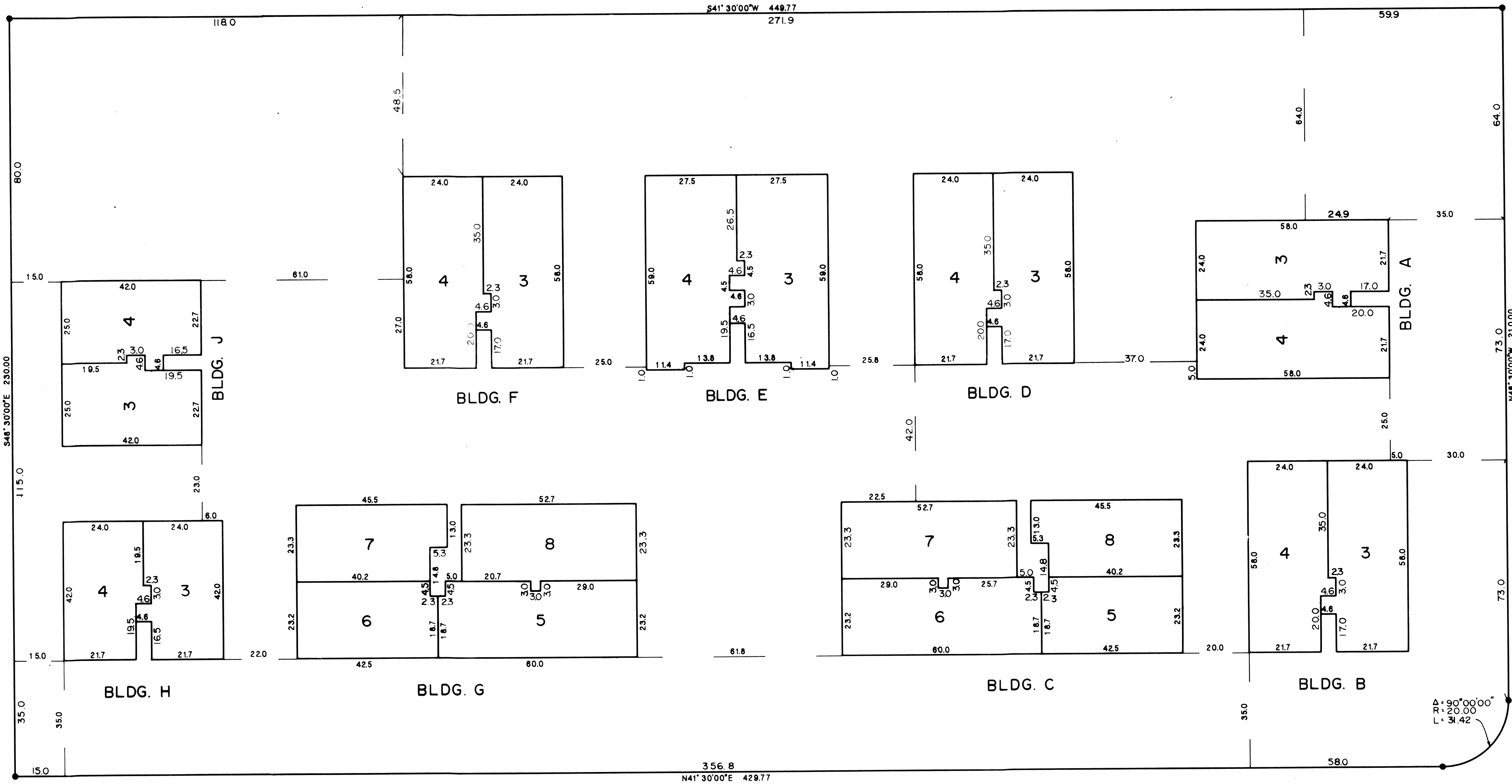
1ST FLOOR

SHEET 2 OF 3 SHEETS

SEPARATE ASSESSMENTS
 OF
 VILLA CONSTANCE SOUTH

BEING A PORTION OF LOT 65
 OF THE OUTSIDE PUEBLO LANDS
 OF THE CITY OF SANTA BARBARA, CALIFORNIA

SANTA BARBARA, CALIFORNIA
 PENFIELD & SMITH ENGINEERS, INC.
 SCALE: 1" = 20' OCTOBER 1981
 W.O. 6236



2ND FLOOR

SHEET 3 OF 3 SHEETS

SEPARATE ASSESSMENTS
OF
VILLA CONSTANCE SOUTH

BEING A PORTION OF LOT 65
OF THE OUTSIDE PUEBLO LANDS
OF THE CITY OF SANTA BARBARA, CALIFORNIA

SANTA BARBARA, CALIFORNIA
PENFIELD & SMITH ENGINEERS, INC.
SCALE: 1" = 20' OCTOBER 1981
W.O. 6236