

SURVEYOR'S CERTIFICATE:

I, George N. Dumas, HEREBY CERTIFY THAT THIS MAP FOR SEPARATE ASSESSMENT CONSISTING OF 6 SHEETS CORRECTLY SHOWS THE BOUNDARIES OF THE LAND AND THE RELATION THERETO OF THE UNITS SHOWN HEREON AND THAT THE UNITS DESCRIBED HEREIN OCCUPY THE POSITIONS AS SHOWN HEREON WITH MINOR VARIATIONS.

George N. Dumas
L.S. 5767

COUNTY ASSESSOR'S CERTIFICATE:

THIS MAP CONFORMS WITH THE REQUIREMENTS OF THE REVENUE AND TAXATION CODE.

DATE: Dec. 17, 1981

William H. Cook
COUNTY ASSESSOR

COUNTY RECORDER'S CERTIFICATE:

I HEREBY CERTIFY THAT THIS MAP FOR SEPARATE ASSESSMENT OF VILLA CONSTANCE NORTH, CONSISTING OF 6 SHEETS, WAS ACCEPTED AND RECORDED December 18th, 1981 IN BOOK 1 AT PAGES 10 TO 15, Maps OF Separate Assmts. RECORDS OF SANTA BARBARA COUNTY, CALIFORNIA, AT 4:00 P.M.

~~FILE NO.~~
FEE \$16.00

HOWARD C. MENZEL
COUNTY CLERK-RECORDER
SANTA BARBARA COUNTY
CALIFORNIA

BY: Mary Rose Macdonald

BLDG. #1	ADDRESS	UNIT	GARAGE
SEE SHTS.	2828	F	3
	2830	D	8
3 & 6	2832	C	5
	2834	E	1
	2836	A	4

BLDG. #2	ADDRESS	UNIT	GARAGE
SEE SHTS.	2818	C	9
	2820	D	27
3 & 5	2822	B	7
	2824	A	2

BLDG. #3	ADDRESS	UNIT	GARAGE
SEE SHTS.	2802	B	14 & 15
	2804	C	11 & 12
3 & 5	2806	A	20
	2808	D	6

BLDG. #4	ADDRESS	UNIT	GARAGE
SEE SHTS.	2810	D	16
	2812	C	31
3 & 5	2814	A	10
	2816	B	18 & 19

BLDG. #5	ADDRESS	UNIT	GARAGE
SEE SHTS.	2760	A	21
	2762	D	26
4 & 5	2764	B	22
	2766	C	17

BLDG. #6	ADDRESS	UNIT	GARAGE
SEE SHTS.	2752	C	36
	2754	B	30
4 & 5	2756	D	28
	2758	A	29

BLDG. #7	ADDRESS	UNIT	GARAGE
SEE SHTS.	2744	C	24
	2746	D	35
4 & 5	2748	B	23
	2750	A	25

BLDG. #8	ADDRESS	UNIT	GARAGE
SEE SHTS.	2734	F	33
	2736	E	39
4 & 6	2738	C	32
	2740	A	37
	2742	D	34

BLDG. #9	ADDRESS	UNIT	GARAGE
SEE SHTS.	2724	D	41
	2726	C	43
4 & 5	2730	B	38
	2732	A	40

BLDG. #10	ADDRESS	UNIT	GARAGE
SEE SHTS.	2712	E	44
	2714	C	46
4 & 6	2716	D	45
	2718	F	47
	2720	A	42

SHEET 1 OF 6 SHEETS

MAP FOR
SEPARATE ASSESSMENTS
OF

VILLA MIRADERO NORTH

BEING A PORTION OF LOT 66
OF THE OUTSIDE PUEBLO LANDS
OF THE CITY OF SANTA BARBARA, CALIFORNIA

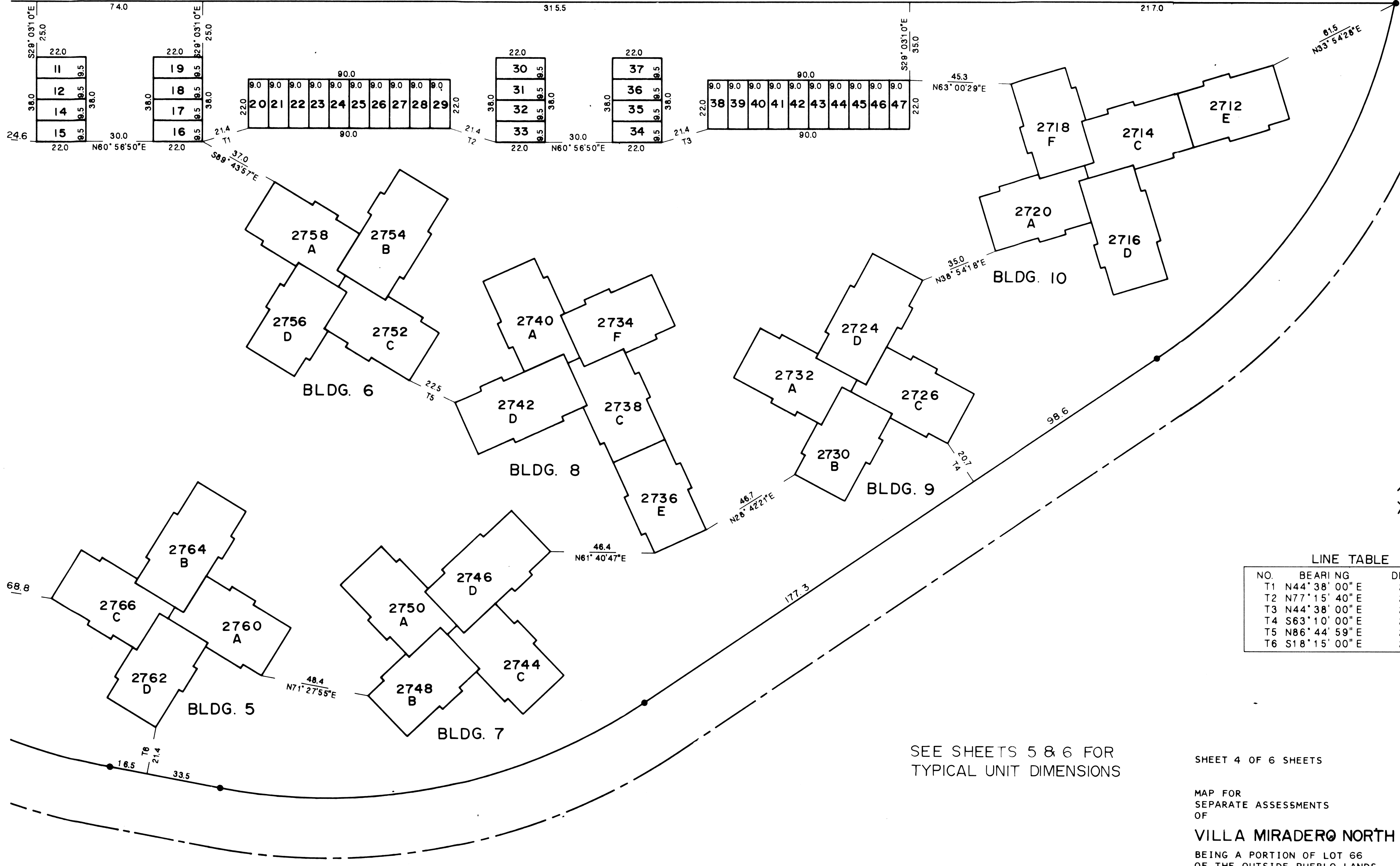
SANTA BARBARA, CALIFORNIA

PENFIELD & SMITH ENGINEERS, INC.

OCTOBER 1981

W.O. 6241

POINT "C"
SEE SHEET 2



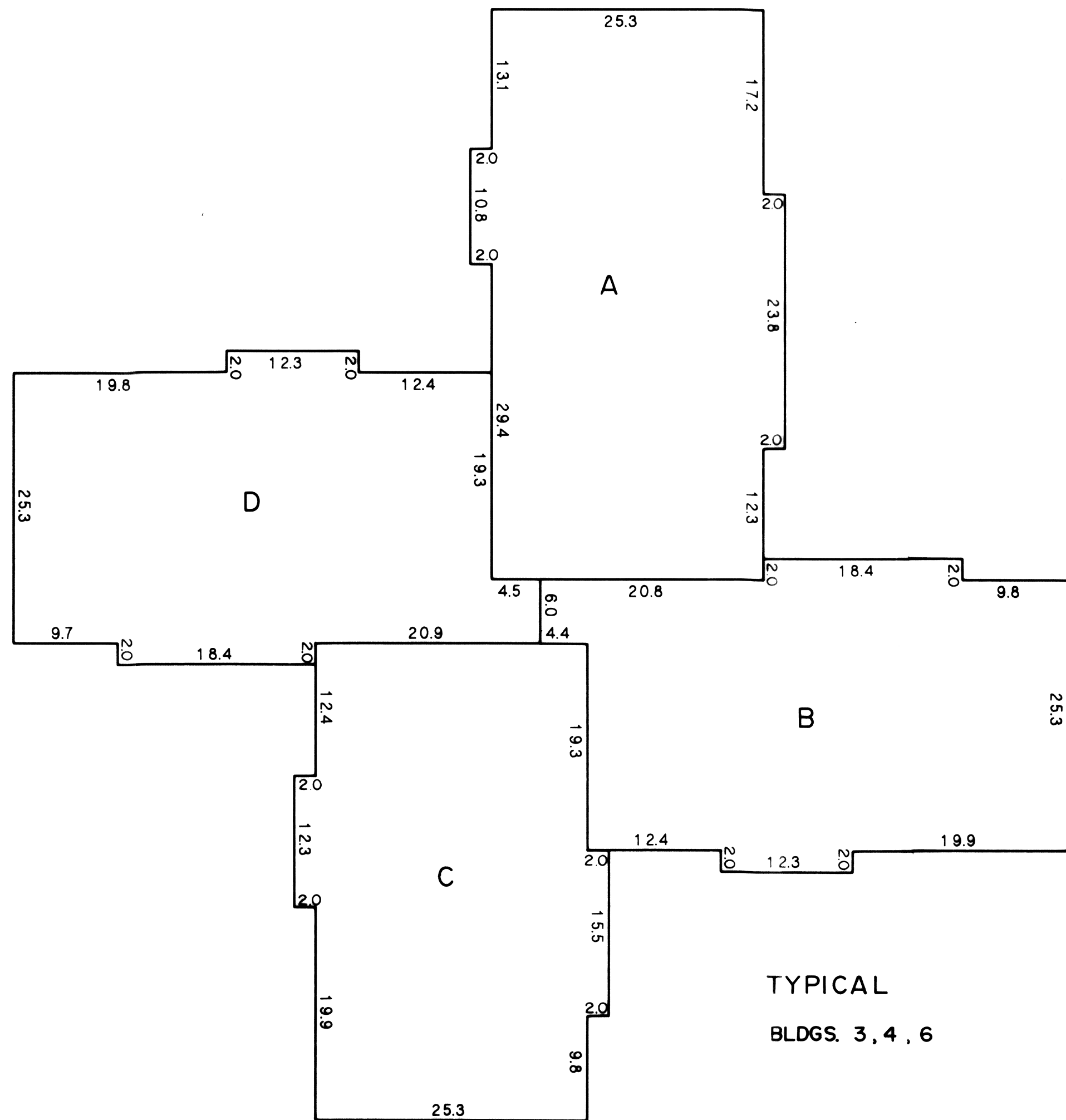
LINE TABLE

NO.	BEARING	DI STANCE
T1	N44°38'00"E	21.36
T2	N77°15'40"E	21.36
T3	N44°38'00"E	21.36
T4	S63°10'00"E	20.73
T5	N86°44'59"E	22.48
T6	S18°15'00"E	21.38

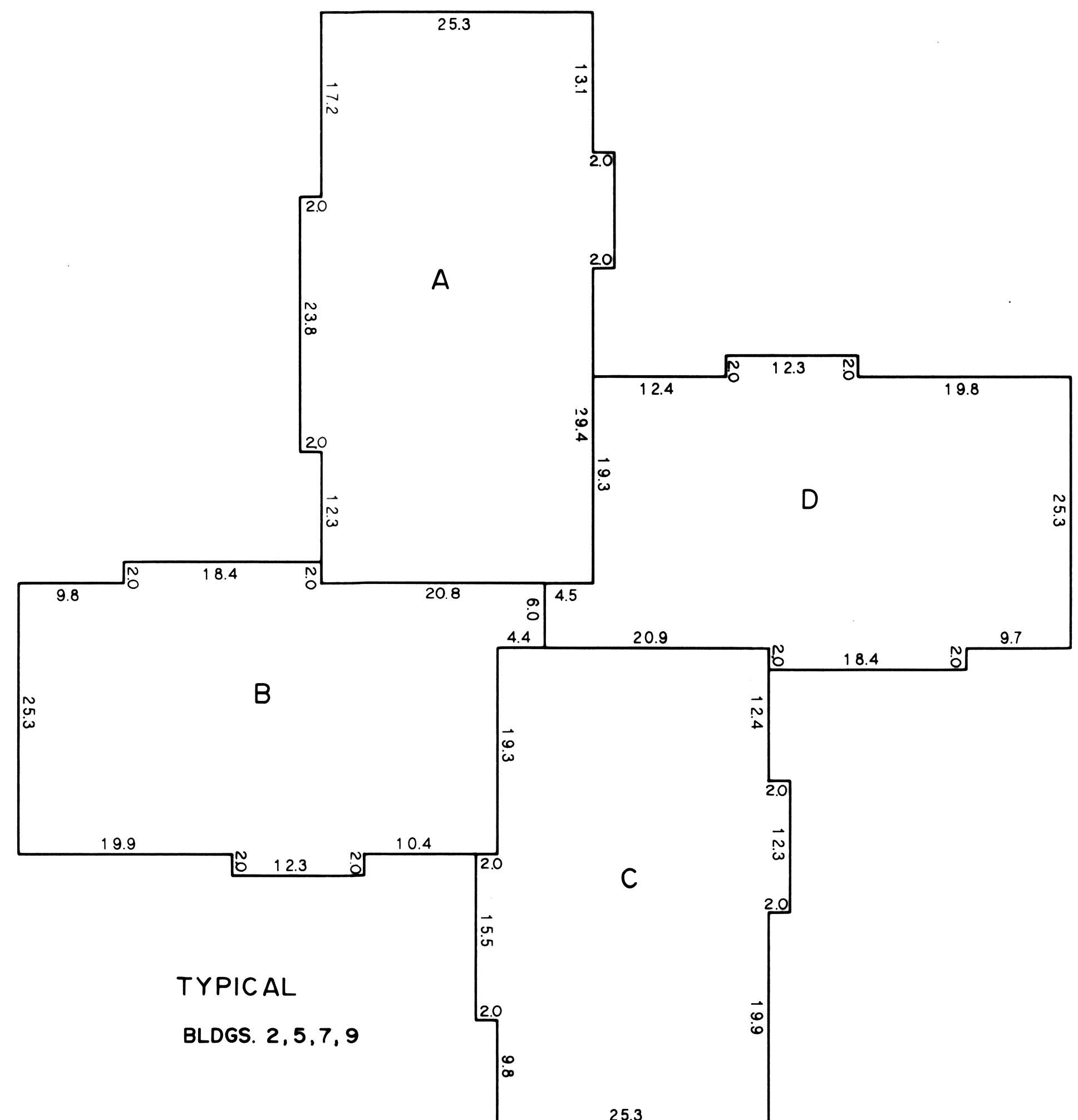
SEE SHEETS 5 & 6 FOR
TYPICAL UNIT DIMENSIONS

SHEET 4 OF 6 SHEETS

MAP FOR
SEPARATE ASSESSMENTS
OF
VILLA MIRADERO NORTH
BEING A PORTION OF LOT 66
OF THE OUTSIDE PUEBLO LANDS
OF THE CITY OF SANTA BARBARA, CALIFORNIA
SANTA BARBARA, CALIFORNIA
PENFIELD & SMITH ENGINEERS, INC.
SCALE: 1" = 30' OCTOBER 1981
W.O. 6241



TYPICAL
BLDGS. 3, 4, 6



TYPICAL
BLDGS. 2, 5, 7, 9

SHEET 5 OF 6 SHEETS

MAP FOR
SEPARATE ASSESSMENTS
OF

VILLA MIRADERO NORTH

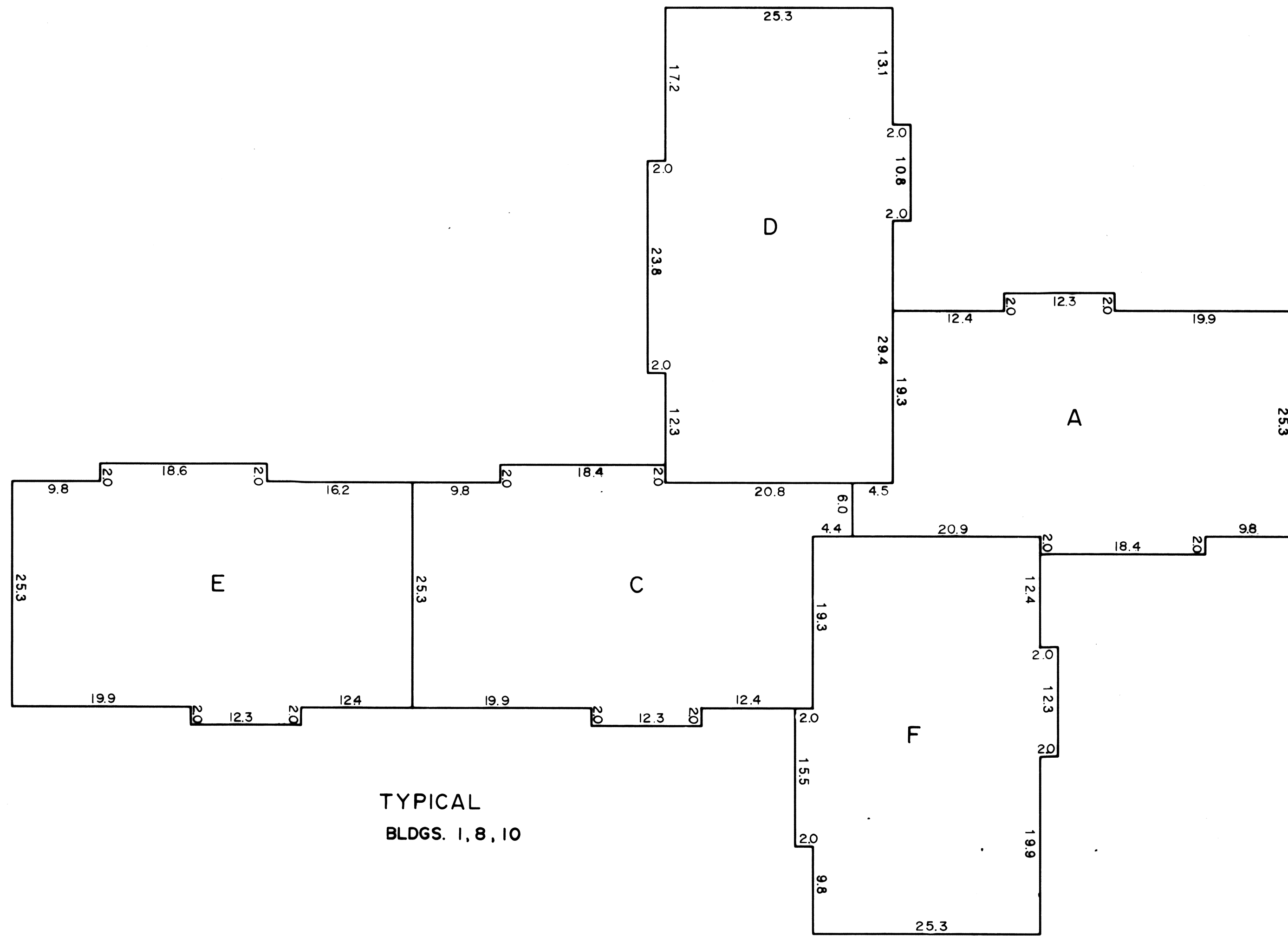
BEING A PORTION OF LOT 66
OF THE OUTSIDE PUEBLO LANDS
OF THE CITY OF SANTA BARBARA, CALIFORNIA

SANTA BARBARA, CALIFORNIA

PENFIELD & SMITH ENGINEERS, INC.

SCALE: 1" = 10' OCTOBER 1981

W.O. 6241



TYPICAL
BLDGS. 1, 8, 10

SHEET 6 OF 6 SHEETS

MAP FOR
SEPARATE ASSESSMENTS
OF

VILLA MIRADERO NORTH
BEING A PORTION OF LOT 66
OF THE OUTSIDE PUEBLO LANDS
OF THE CITY OF SANTA BARBARA, CALIFORNIA

SANTA BARBARA, CALIFORNIA

PENFIELD & SMITH ENGINEERS, INC.

SCALE: 1" = 10' OCTOBER 1981

WO. 6241