

S56°11'30"E

SANDYLAND ROAD

35'

S56°11'30"E 217.90
200.5

17.4

N56°11'30"W

101

102

103

N76°30'11"W

SEE SHEET 3 FOR TYPICAL UNIT DIMENSIONS

AVENUE

40'

N45°00'00"W

N45°00'00"W

N45°00'00"W

N45°00'00"W

N45°00'00"W

N45°00'00"W

N45°00'00"W

N45°00'00"W

N45°00'00"W

N45°00'00"W

N45°00'00"W

N45°00'00"W

N45°00'00"W

N45°00'00"W

N45°00'00"W

N45°00'00"W

N45°00'00"W

N45°00'00"W

N45°00'00"W

N45°00'00"W

N45°00'00"W

N45°00'00"W

N45°00'00"W

N45°00'00"W

N45°00'00"W

N45°00'00"W

N45°00'00"W

N45°00'00"W

N45°00'00"W

N45°00'00"W

N45°00'00"W

N45°00'00"W

N45°00'00"W

N45°00'00"W

N45°00'00"W

N45°00'00"W

N45°00'00"W

N45°00'00"W

N45°00'00"W

N45°00'00"W

N45°00'00"W

N45°00'00"W

N45°00'00"W

N45°00'00"W

N45°00'00"W

N45°00'00"W

N45°00'00"W

N45°00'00"W

N45°00'00"W

N45°00'00"W

N45°00'00"W

N45°00'00"W

N45°00'00"W

N45°00'00"W

N45°00'00"W

N45°00'00"W

N45°00'00"W

N45°00'00"W

N45°00'00"W

N45°00'00"W

N45°00'00"W

N45°00'00"W

N45°00'00"W

N45°00'00"W

N45°00'00"W

N45°00'00"W

N45°00'00"W

N45°00'00"W

N45°00'00"W

N45°00'00"W

N45°00'00"W

N45°00'00"W

N45°00'00"W

N45°00'00"W

N45°00'00"W

N45°00'00"W

N45°00'00"W

N45°00'00"W

N45°00'00"W

N45°00'00"W

N45°00'00"W

N45°00'00"W

N45°00'00"W

N45°00'00"W

N45°00'00"W

N45°00'00"W

N45°00'00"W

N45°00'00"W

N45°00'00"W

N45°00'00"W

N45°00'00"W

N45°00'00"W

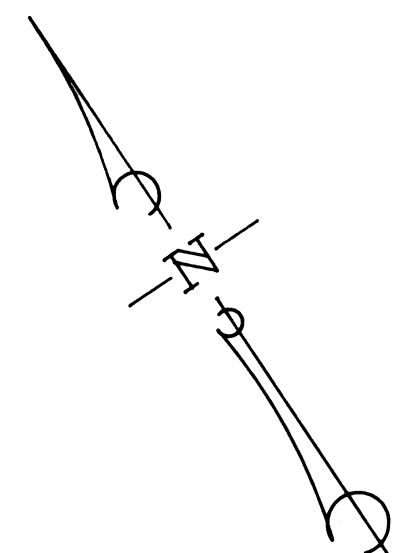
N45°00'00"W

N45°00'00"W

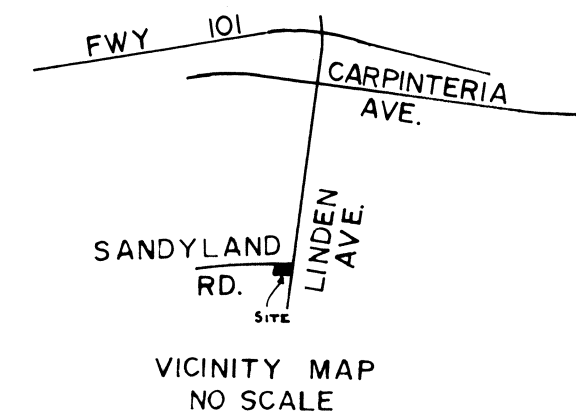
N45°00'00"W

N45°00'00"W

NO.	BEARING	DISTANCE
T1	S45°00'00"W	7.50
T2	S45°00'00"W	7.50
T3	S45°00'00"W	7.50
T4	S45°00'00"W	7.50
T5	N45°00'00"W	21.00
T6	S45°00'00"W	14.00
T7	N45°00'00"W	14.00
T8	S45°00'00"W	7.50
T9	N45°00'00"W	16.76
T10	N33°48'30"E	13.00
T11	S45°00'00"E	9.65
T12	S45°00'00"E	15.00
T13	S45°00'00"E	7.86



SCALE: 1" = 16'



SHEET 1 OF 3 SHEETS

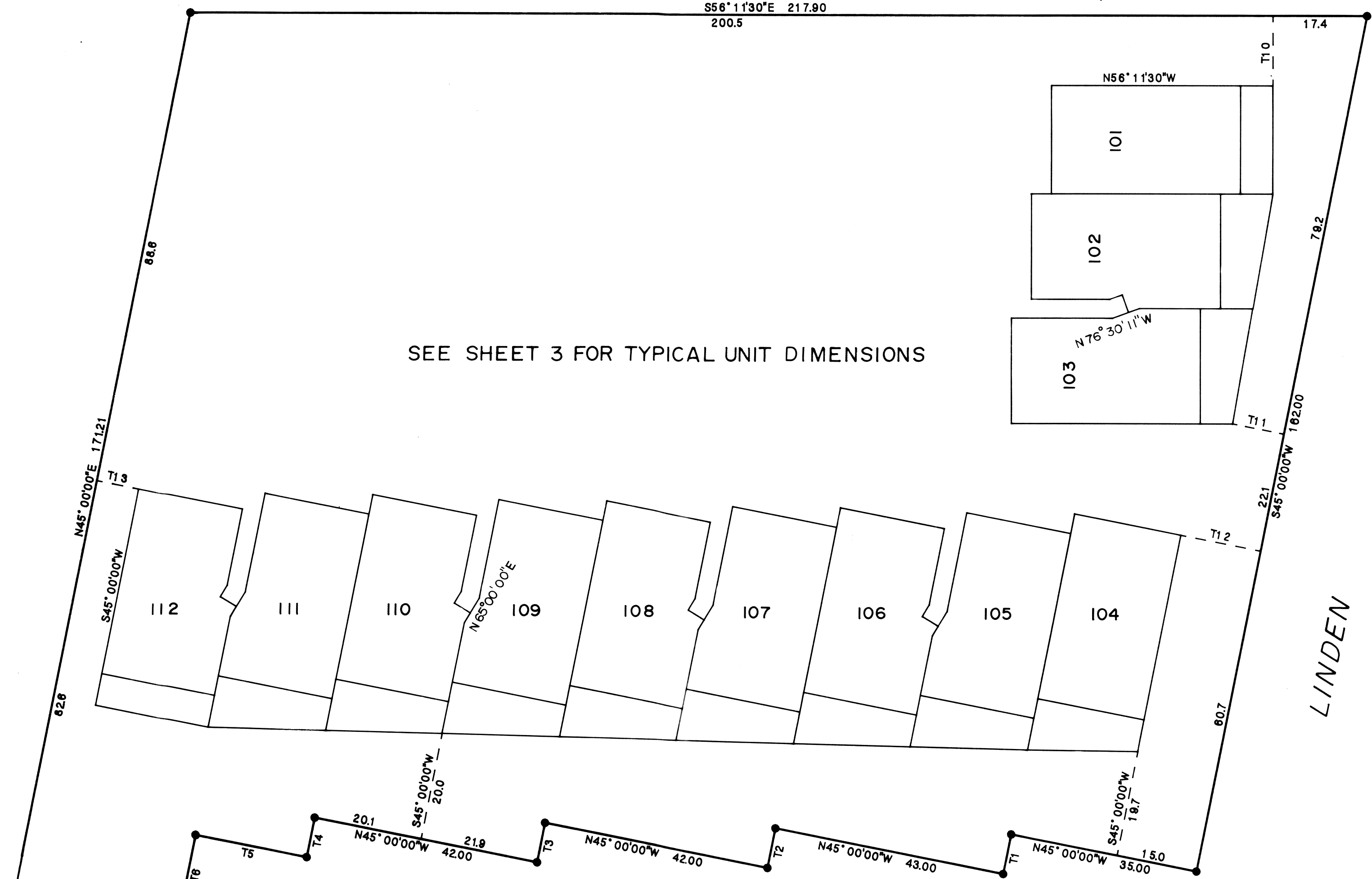
MAP FOR SEPARATE ASSESSMENTS OF

LA MAREJADA

BEING A PORTION OF BLOCK 29 IN THE CITY OF CARPINTERIA, COUNTY OF SANTA BARBARA, STATE OF CALIFORNIA

CITY OF CARPINTERIA, CALIFORNIA
PENFIELD & SMITH ENGINEERS, INC.

WO 8337 FEBRUARY 1982



PLOT PLAN FIRST FLOOR

COUNTY ASSESSOR'S CERTIFICATE:

THIS MAP CONFORMS WITH THE REQUIREMENTS OF THE REVENUE AND TAXATION CODE.

DATE: 2/12/82

William H. Cook
COUNTY ASSESSOR

SURVEYOR'S CERTIFICATE:

I, GEORGE N. DUMAS, HEREBY CERTIFY THAT THIS MAP FOR SEPARATE ASSESSMENT CONSISTING OF 3 SHEETS CORRECTLY SHOWS THE BOUNDARIES OF THE LAND AND RELATION THERETO OF THE UNITS SHOWN HEREON AND THAT THE UNITS DESCRIBED HEREIN OCCUPY THE POSITIONS AS SHOWN HEREON WITH MINOR VARIATIONS.

George N. Dumas
LS. 3767



COUNTY RECORDER'S CERTIFICATE:

I HEREBY CERTIFY THAT THIS MAP FOR SEPARATE ASSESSMENT OF LA MAREJADA, CONSISTING OF 3 SHEETS, WAS ACCEPTED AND RECORDED February 17th, 1982 IN BOOK 1 AT PAGES 16 TO 18 OF SEPARATE ASSESSMENTS, RECORDS OF SANTA BARBARA COUNTY, CALIFORNIA, AT 3:00 P.M.

FEE \$10.00

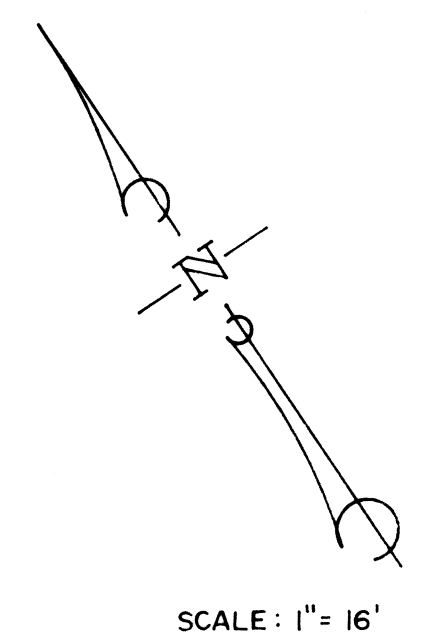
HOWARD C. MENZEL
COUNTY CLERK-RECORDER
SANTA BARBARA COUNTY
CALIFORNIA

By: Mary Rose Macdonald



PLOT PLAN SECOND AND THIRD FLOORS
 SEE SHEET 3 FOR
 TYPICAL UNIT DIMENSIONS

NO.	BEARING	DISTANCE
T1	S45° 00' 00" W	7.50
T2	S45° 00' 00" W	7.50
T3	S45° 00' 00" W	7.50
T4	S45° 00' 00" W	7.50
T5	N45° 00' 00" W	21.00
T6	S45° 00' 00" W	14.00
T7	N45° 00' 00" W	14.00
T8	S45° 00' 00" W	7.50
T9	N45° 00' 00" W	16.76
T10	N33° 48' 30" E	13.00
T11	S45° 00' 00" E	9.65
T12	S45° 00' 00" E	15.00
T13	S45° 00' 00" E	7.66



SHEET 2 OF 3 SHEETS

MAP FOR
 SEPARATE ASSESSMENTS
 OF

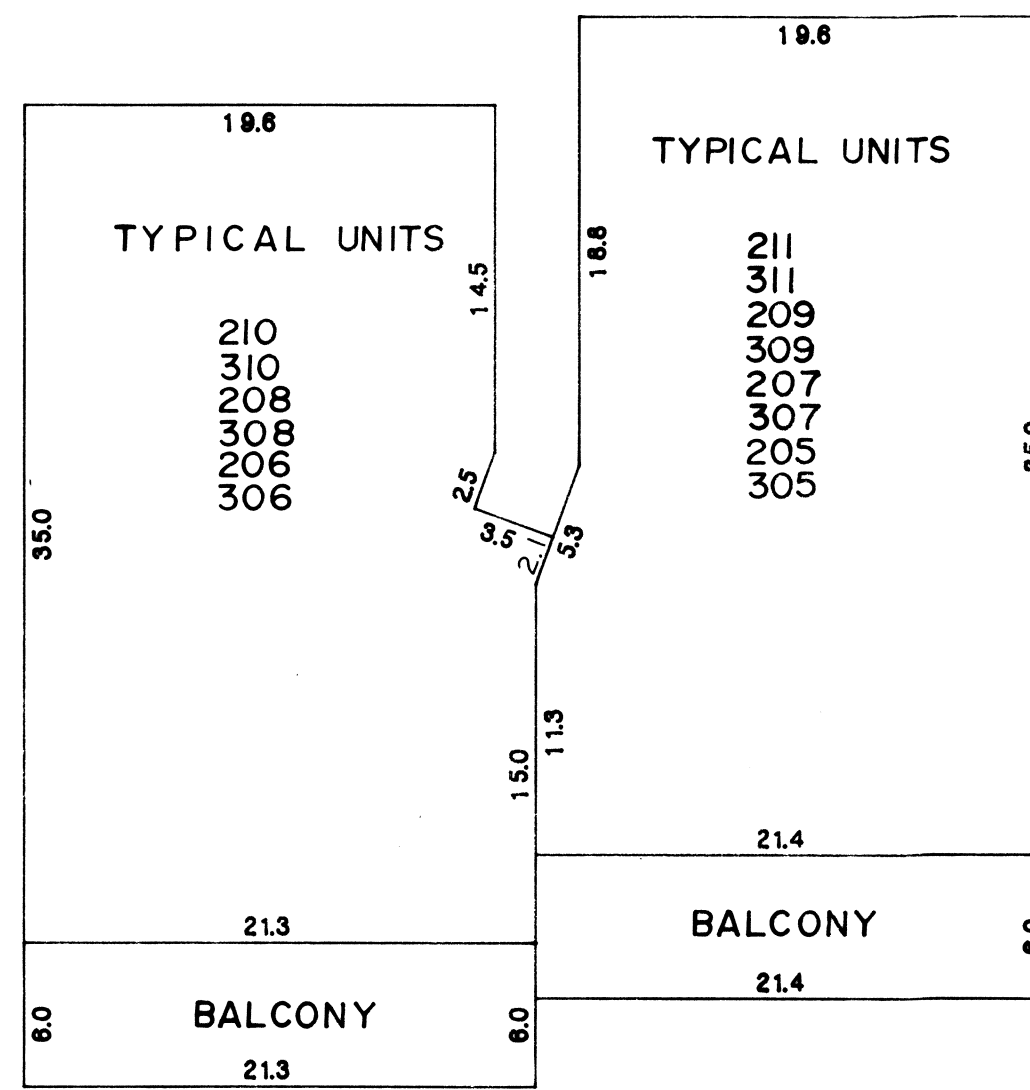
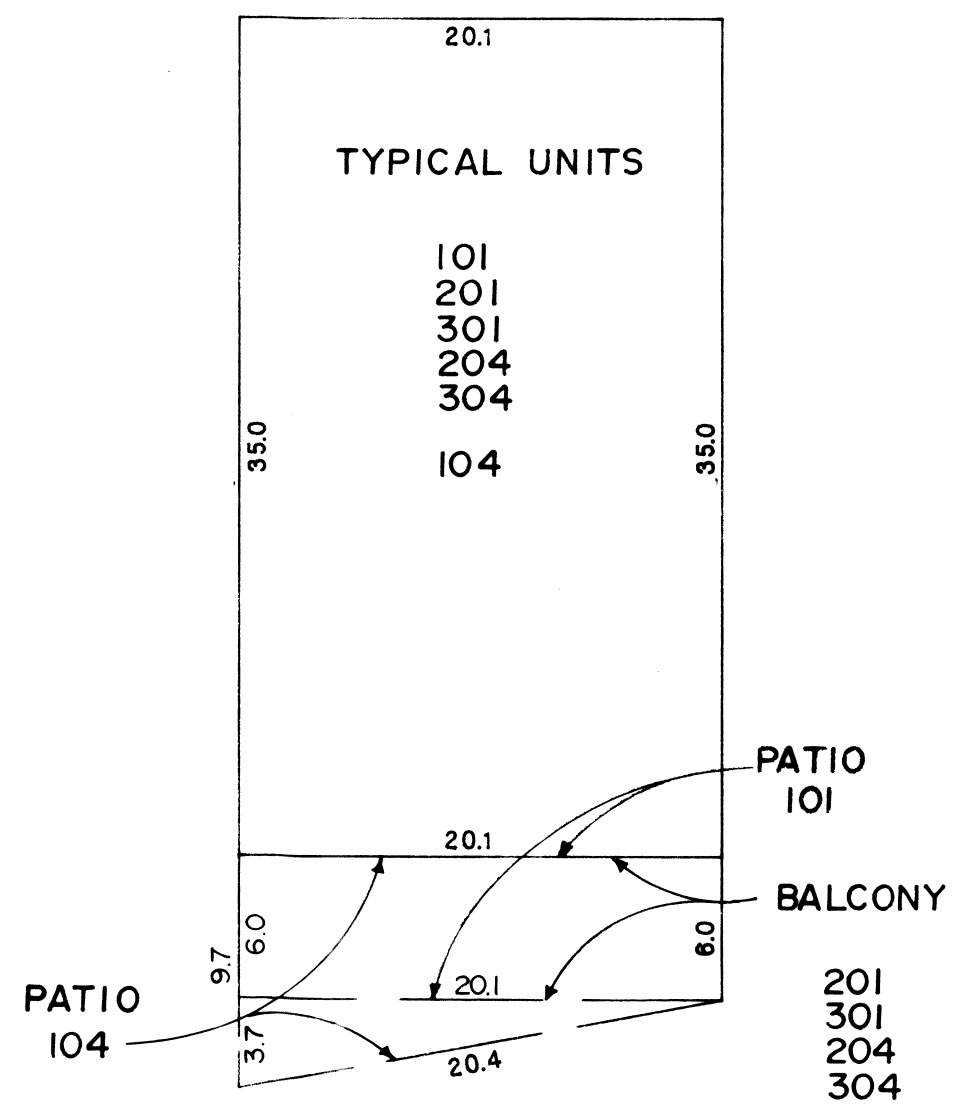
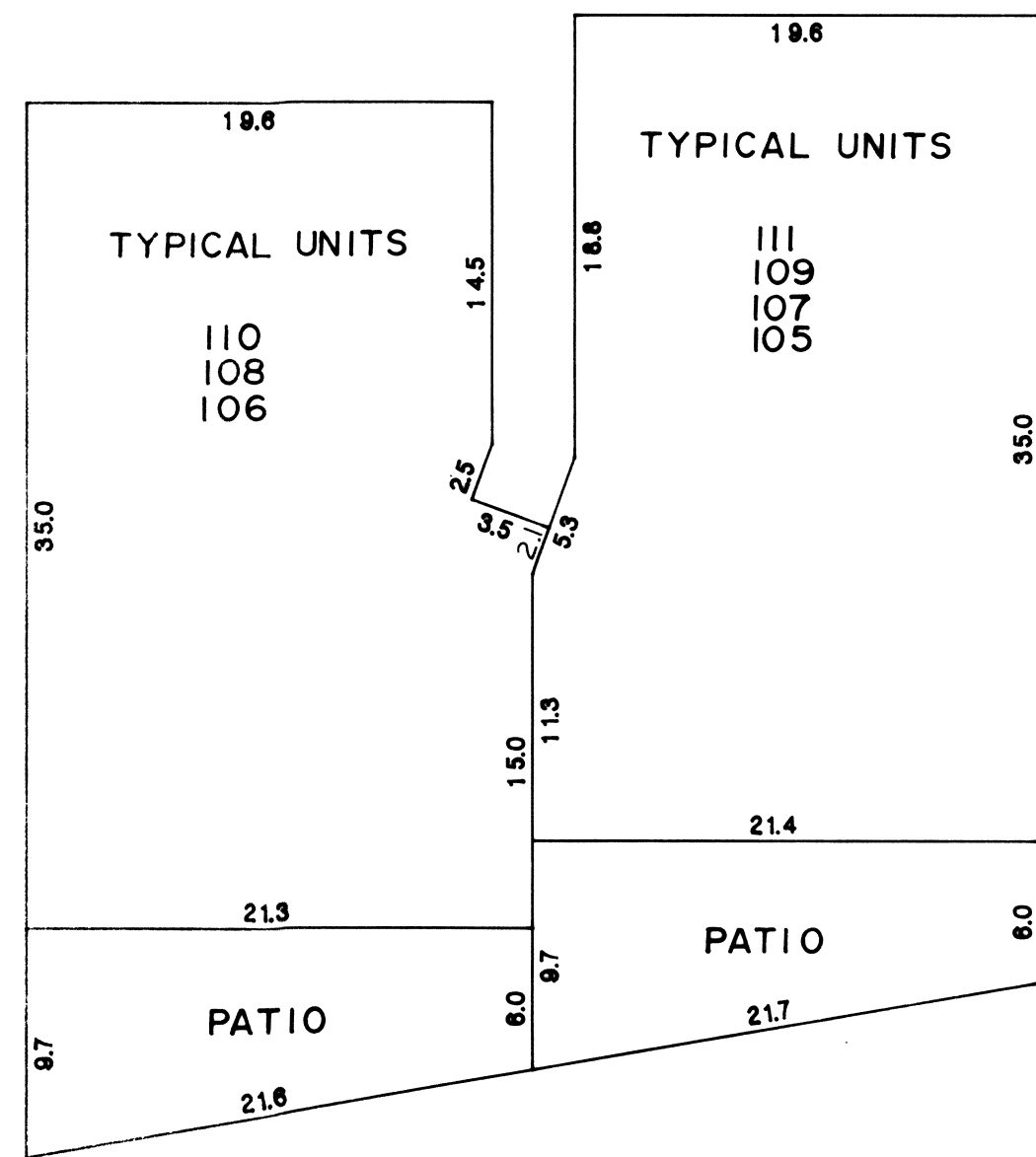
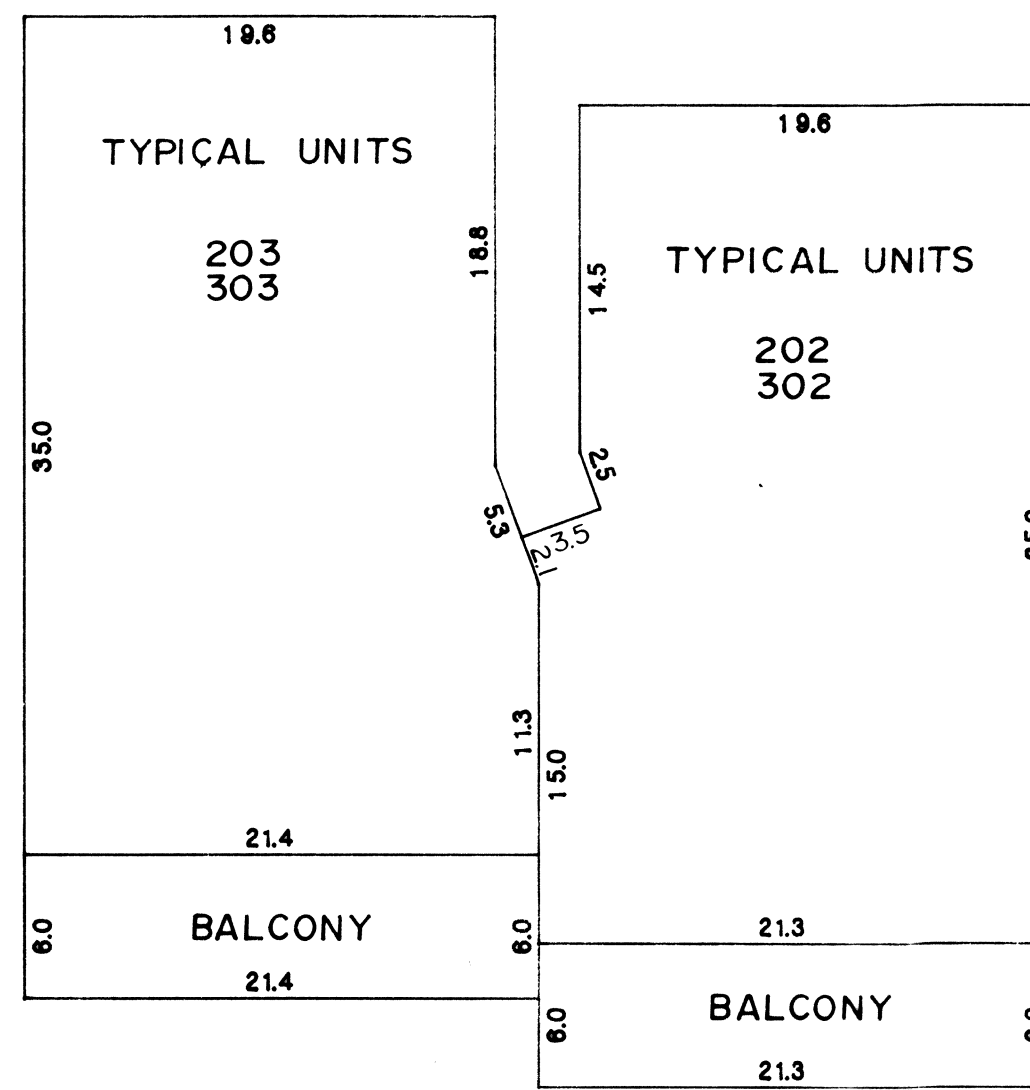
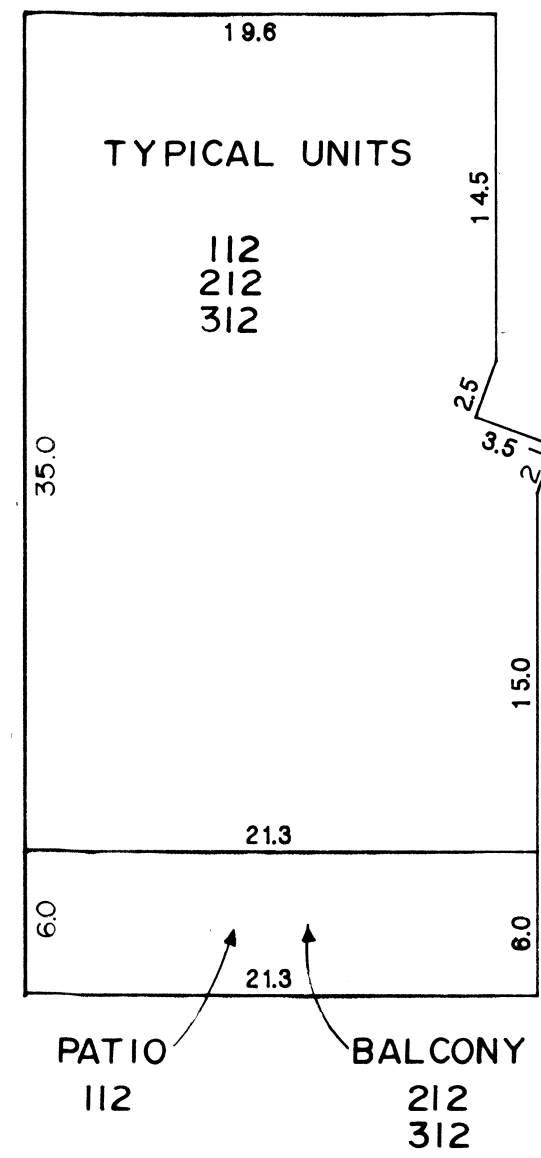
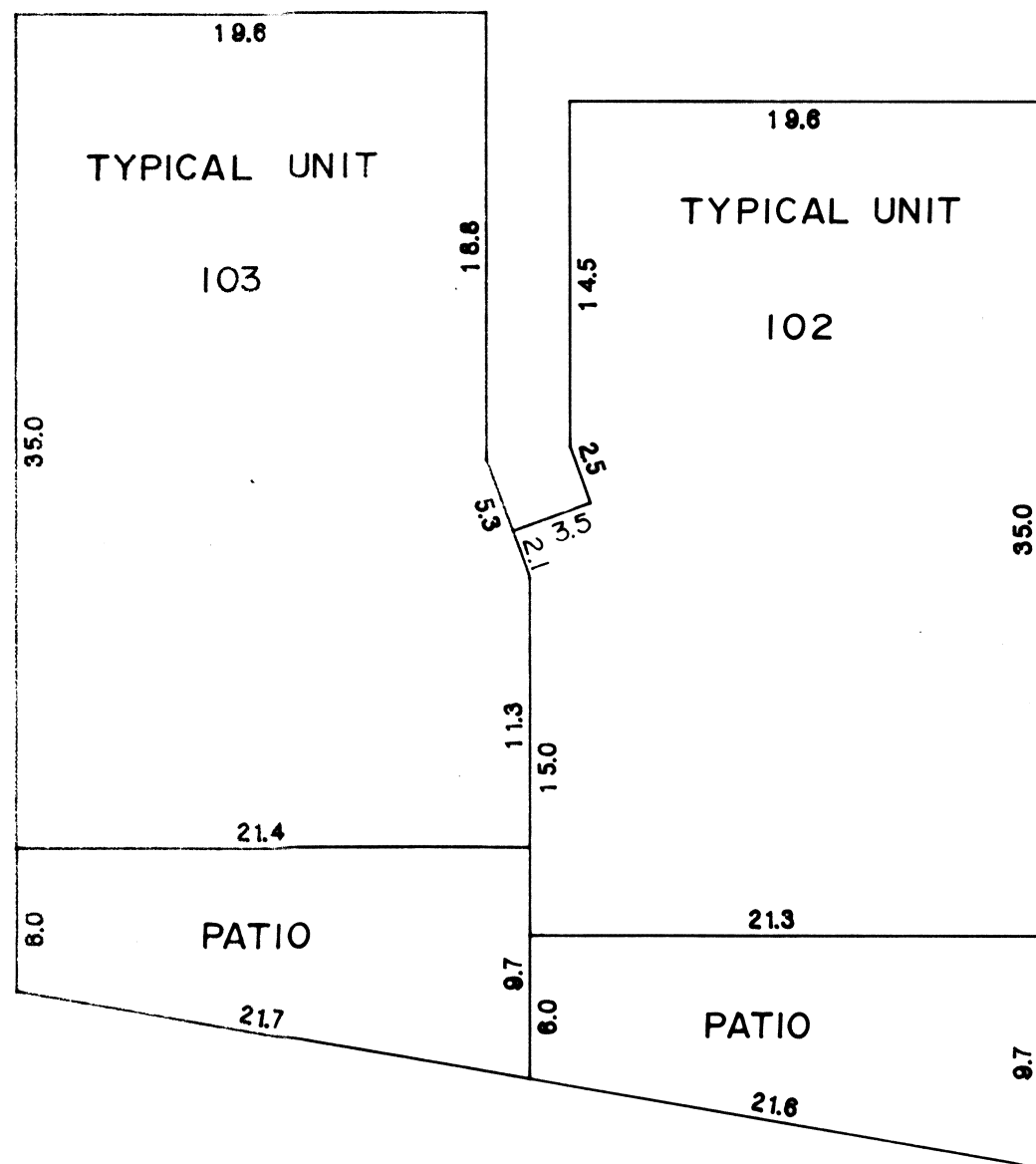
LA MAREJADA

BEING A PORTION OF BLOCK 29
 IN THE CITY OF CARPINTERIA, COUNTY
 OF SANTA BARBARA, STATE OF CALIFORNIA

CITY OF CARPINTERIA, CALIFORNIA

PENFIELD & SMITH ENGINEERS, INC.

WO 6337 FEBRUARY 1982



TYPICAL UNITS

SHEET 3 OF 3 SHEETS

MAP FOR
SEPARATE ASSESSMENTS
OF

LA MAREJADA

BEING A PORTION OF BLOCK 29
IN THE CITY OF CARPINTERIA, COUNTY
OF SANTA BARBARA, STATE OF CALIFORNIA

CITY OF CARPINTERIA, CALIFORNIA

PENFIELD & SMITH ENGINEERS, INC.

WD 6337 FEBRUARY 1982

SCALE: 1" = 8'