

5.0° 44' W 1320.00'

5.89° 16' E 1320.00'

N. 0° 44' E. 650.00'

N. 0° 44' E. 1320.00'

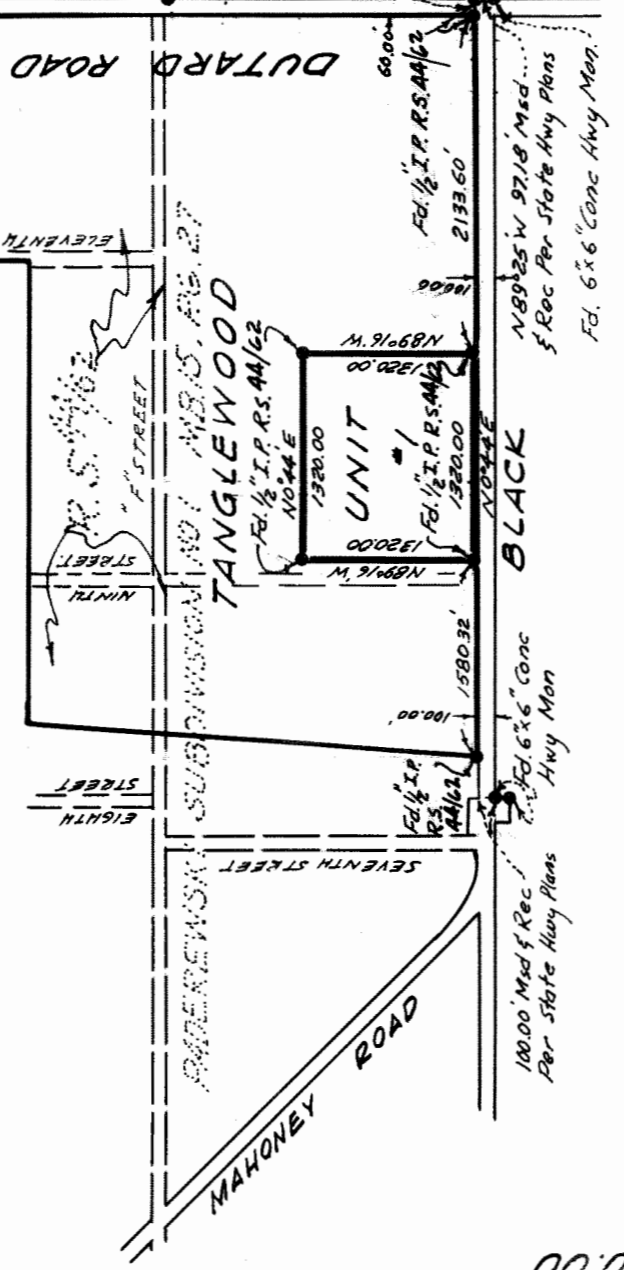
ROAD

BLACK

Recorder's Note: For correction of tag data see Certificate of Correction in Book 1681 at Page 334 of Official Records, Santa Barbara County, California.

*James L. Howler* Recorder

AIRPORT



VICINITY MAP  
No Scale

- Notes:
- Denotes 9/8 galvanized iron pipe, 18" long with lead plug and copper tack set 12" below finished surface.
  - Denotes 1/2" galvanized iron pipe, 12" long set with copper tag and. REE693
  - Denotes monument found or noted.
- Set 1/2" galvanized iron pipe at all lot corners with tag wired R.E. 4923 unless otherwise noted.
- Reference points (A) will be installed in curbs (lead plug steps) at each corner of all street intersections. Bearings & distances to center line monuments will be filed with Santa Barbara County Surveyor's Office.

MAP OF  
**UNIT #1 TRACT 10,011  
TANGLEWOOD**

SANTA BARBARA COUNTY, CALIFORNIA  
BEING A SUBDIVISION OF A PARCEL OF LAND IN A  
PORTION OF: PADEREWSKI SUBDIVISION #1  
SANTA BARBARA COUNTY, CALIFORNIA

AT REQUEST OF: SINTON & SAVAGE  
FEBRUARY 1959  
SCALE: 1"=100'  
PACIFIC ENGINEERS & SURVEYORS INC.  
SAN LUIS OBISPO, CALIF.

BASIS OF BEARINGS:  
The West right of way line of Black Road shown on State Division of Highway Plans of Santa Barbara Access Route, Carmelita-Santa Maria, on Sheets 14, 15, 16, to be N 0° 44' E.

*W. E. Howler*  
CIVIL ENGINEER NO. 5923

19,393 SHEET 2 OF 2 SHEETS